

V-WEB SERIES V-THERMAL-SERIES

Thermal Imaging IP Camera



Veilux Thermal imaging cameras are made in the field of high-tech thermal imaging results. Using the latest uncooled infrared focal plane sensor and self-developed image processing algorithms, with a new generation of high thermal infrared transmittance of the lens, without the need any light source, by detecting the infrared radiation (or heat), in all weather conditions even dark environments to obtain high definition images.

Principle of thermal imaging technology.

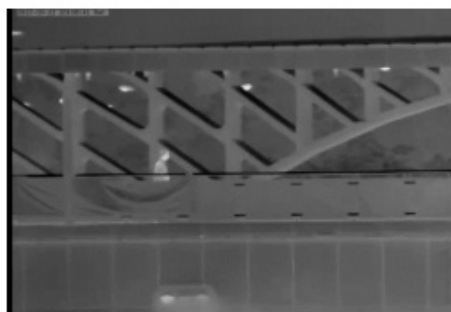
Any object as long as its temperature above absolute zero (-273.15°), although not light, infrared radiation, but can, also called infrared heat radiation. Objects of different temperatures in the infrared radiation is absorbed by the infrared detector, generating a temperature variation, resulting in electric effect, the electrical signal is amplified and then processed, the object is obtained with the surface of the heat distribution corresponding thermal image, that is, "thermal imaging."



Night remote parking monitoring



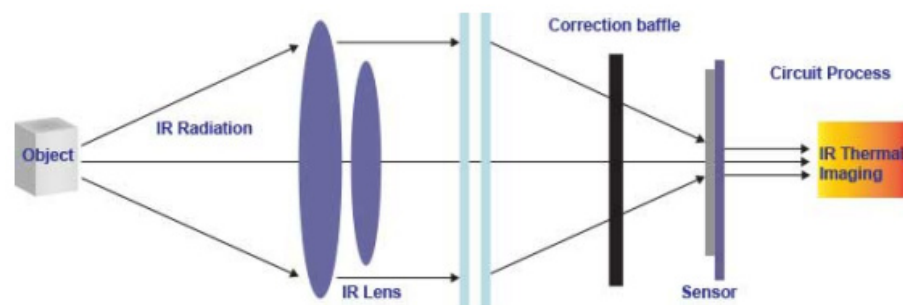
Night road monitoring



Hidden target identification



Residual heat detection



V-WEB SERIES V-THERMAL-SERIES

Thermal Imaging IP Camera



Key Features

- Uncooled infrared focal plane sensor
- 8 ~ 14um long wave infrared detection pixels up to 420 × 315 pixels
- Heat sensitivity, up to 50mK
- Support pseudo-color mode switching: Black hot / White Heat / Rainbow / on oxide red
- Support DVE image enhancement features
- Support Noise / mirroring
- Supports H.264 BP / MP / HP / MJPEG optional four coding algorithms and compatibility
- Real-time 3 yards stream output can meet local storage and network transmission of video
- 1 channel audio input, 1 channel audio output, two-way voice intercom
- Support Micro SD (maximum capacity to support 32GB) card local storage, can effectively solve the video lost due to network failure caused the problem.
- Hardware watchdog, fault auto recovery
- Metal linkage cooling design
- Three-axis rotation adjustable bracket for easy installation adjustment

Specifications	V-THERMAL-8MM	V-THERMAL-15MM	V-THERMAL-35MM	V-THERMAL-35MM	V-THERMAL-50MM
Detector Performance					
Detector Type	Uncooled sensor				
Induction	Microbolometer				
Pixel	420x315				
Pixel Pitch	25um				
Response band	8~14um				
Thermal sensitivity NETD	50mK				
Frame Rate	50/60Hz				
Video Features					
Fixed Focus Lens	8mm	15mm	25mm	35mm	50mm
Focus Mode	Manual				
Field of View (FOV) H x V	75.4° x 54.4°	39.7° x 23.7°	23.7° x 17.9°	17° x 12.8°	11.9° x 9°
Aperture	1.0				
Recognition Distance (Vehicle)	120m (394ft)	200m (656 ft)	350m (1,148ft)	500m (1,640ft)	650m (2,133ft)
Recognition Distance (Person)	60m (197ft)	110m (361ft)	180m (590ft)	250m (820ft)	350m (1,148 ft)
Functional Properties					
Pseudo-color image mode	Black hot / White Heat / Rainbow / Ironbow				
DVE image enhancement	1 to 7				
Mirroring	Horizontal / vertical / horizontal + vertical				
Noise Reduction	Support, 2D/3D				
Correction	Auto / Manual / Externa				
OSD Display	Support				
Image features					
Output Image Resolution	D1/CIF				
Frame Rate	25fps				
Encoding Features					
Video Compression Format	H.264BP / MP / HP / MJPEG				
Audio Compression Format	G711, AMR, RAW_PCM				
Multi-stream	Supported				
Rate Control	CBR / VBR				
Stream Range Adjustment	50Kb ~ 4Mb				
Network Features					
Network Protocol	IPv4/v6,RTSP/RTP/RTCP/TCP/UDP/HTTP/DHCP/DNS,FTP/PPPOE,SMTP/SIP				
Storage Protocol	CIFS, NFS				
WEB Management	Built-WEB services, through remote viewing and configuration of IE				
Remote Upgrade and Maintenance	Support				
Integration Features	Support international standards Onvif v2.2 Profile-S				
Maximum User Visits	Supports up to 10 users simultaneously access				
Interface Features					
Network Interface	RJ-45, 10/100Base-T				
Audio Interface	1 channel audio input, 1 channel audio output, support for two-way voice				
Alarm Interface	2 alarm input, 2 alarm output				

V-WEB SERIES V-THERMAL-SERIES

Thermal Imaging IP Camera



Specifications	V-THERMAL-8MM	V-THERMAL-15MM	V-THERMAL-35MM	V-THERMAL-35MM	V-THERMAL-50MM
Analog Video Output Interface	BNC, 750hm				
PTZ Control Interface	RS485				
SD Card Interface	Micro SD card/HCSd card, Maximum 32GB				
System Features					
Intelligent Alarm	Motion detection, I / O alarm, disk alarm				
Heartbeat Mechanism	Supported				
Storage	Local storage, NAS storage, SD card storage				
Privacy Masking	Five regions areas size can be set,				
Character Display	Time, date, channel number, channel name and custom text				
Security	Password protection, support for multi-level user group management, custom permissions, a reset button				
Realiability	Hardware watchdog, fault auto recovery				
Physical Characteristics					
Power Supply	DC12V/ POE				
Power Consumption	5W				
Operating Temperature	14°F to 131°F (-10℃ to 55℃)				
Humidity	RH90% MAX (Non-condensing)				
Protection Class	IP66				
Installation	Wall / Ceiling				
Size	110×388mm				
Weight	1900g				

Dimensions

