

www.GESecurity.com

600P Power Supplies

Overview

The 600P series power supplies are designed to supply low voltage power for standalone fiber link modules. Models are available with either AC or DC outputs.

Model Features

The 610P plugs directly into a standard AC wall outlet, while the other models all have input power cables with attached plugs. The 613P and 614P have detachable power cables and may be used with input voltages ranging from 100 VAC to 240 VAC.



Standard Features

- **UL listed**
- **CSA listed**
- **Compact power supplies for standalone fiber links**
- **Low voltage outputs**
- **Models with AC or DC outputs**
- **Models for North American and international applications**



600P

Power Supplies

Specifications

Model 610P

- Input power: 117 VAC, 60 Hz, 16 W
- Output voltage: 12 VAC
- Output current: 1 A
- Power connection: Plugs directly into standard wall outlet
- Length, attached AC power cable: 6 ft.
- Dimensions: 2.3 in. x 2.0 in. x 1.6 in. (58 mm x 51 mm x 41 mm)
- Weight: 0.64 lb. (0.29 kg)
- Operating temperature: -40 to 167°F (-40 to 75°C)
- Maximum humidity: 95% relative, noncondensing

Model 613P

- Input power: 100 to 240 VAC, 60/50 Hz, 18 W
- Output voltage: 13.5 VDC
- Output current: 1.3 A
- Power factor rating: 10.4
- Power connection: Connects to standard wall outlet with line cord
- Length, attached DC power cable: 6 ft.
- Length, detachable line cord: 6 ft.
- Dimensions: 1.27 in. x 2.3 in. x 4.35 in. (32 mm x 58 mm x 110 mm)
- Weight: 0.79 lb. (0.36 kg)
- Operating temperature: -40 to 167°F (-40 to 75°C)
- Maximum humidity: 95% relative, noncondensing

Model 614P

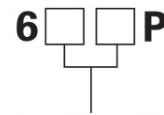
- Input power: 100 to 240 VAC, 60/50 Hz, 51 W
- Output voltage: 13.5 VDC
- Output current: 2.7 A
- Power factor rating: 21.6
- Power connection: Connects to standard wall outlet with line cord
- Length, attached DC power cable: 6 ft.
- Length, detachable line cord: 6 ft.
- Dimensions: 1.11 in. x 2.43 in. x 4.18 in. (28 mm x 62 mm x 106 mm)
- Weight: 0.83 lb. (0.38 kg)
- Operating temperature: -40 to 167°F (-40 to 75°C)
- Maximum humidity: 95% relative, noncondensing

Related Diagram

Not Applicable

Ordering Information

Use the Configurator below to select the options available for this product.



Input/Output Rating

- 10** 115 VAC Input
12 VAC Output @ 1 A
- 13** 100 - 240 VAC Input
13.5 VDC Output @ 1.3 A
- 14** 100 - 240 VAC Input
13.5 VDC Output @ 2.7 A



GE Security

Mailing Address
4575 Research Way, STE 250
Corvallis, OR 97333 USA
www.GESecurity.com

Americas
800-469-1676 (US only)
tel 541-754-9133
fax 541-754-7162

Asia
tel 852-2907-8108
fax 852-2142-5063

Australia
tel +61-3-9676-0270
fax +61-3-9646-7005

Europe
tel +44-113-238-1668
fax +44-113-253-8121

Latin America
tel 305-267-4301
fax 305-267-4300

www.GESecurity.com