

T21Z5816MSP-CS

21X 5.8mm - 121.8mm F1.6
for 1/3 type Cameras, Motorized Zoom
CS-Mount

with Spot Filter and Preset

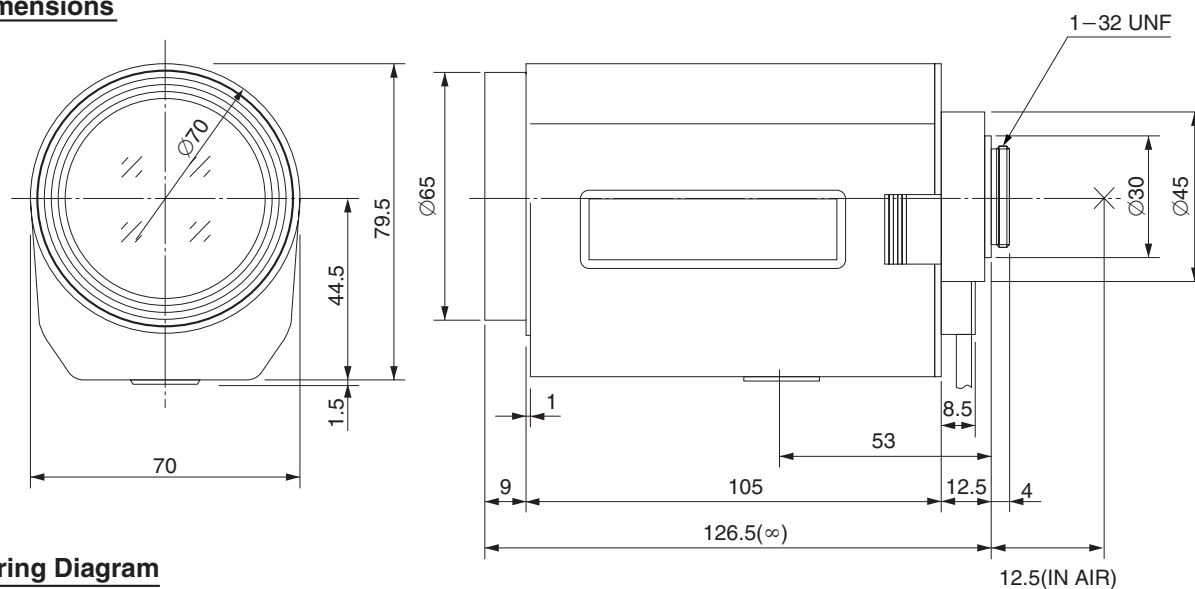
Model No.	T21Z5816MSP-CS		Effective	Front	Ø53.2mm	
Focal Length	5.8mm - 121.8mm		Lens Aperture	Rear	Ø10.6mm	
Max. Aperture Ratio	1:1.6		Back Focal Length		13.6mm	
Max. Image Format	4.8mm x 3.6mm(Ø6mm)		Flange Back Length		12.5mm	
Operation Range	Iris	F1.6 - F560C	Mount		CS-Mount	
	Focus	1.5m - Inf.	Filter Size		M62 P=0.75mm	
	Zoom	5.8mm - 121.8mm	Tripod Screw		1/4 - 20UNC	
Control	Iris	Motorized	Dimensions		W70mm x H81mm x D126.5mm	
	Focus	Motorized, Preset	Weight		700g	
	Zoom	Motorized, Preset				
Object Dimension at M.O.D.	5.8mm	123.7cm x 91.1cm				
	121.8mm	6cm x 4.7cm				
Angle of View	D	1/3 type	55.5° - 2.9°	1/4 type	42.0° - 2.2°	
	H		44.8° - 2.3°		33.8° - 1.8°	
	V		33.8° - 1.8°		25.3° - 1.3°	
		Iris	Focus		Zoom	
Supply Voltage	DC8V		DC8V		DC8V	
Current	20mA or less		40mA or less		35mA or less	
Response Time	Approx. 2.5 sec.		Approx. 4.5 sec.		Approx. 3.5 sec.	
Preset Potentiometer	—		5kQVR		5kQVR	
Operating Temperature	-10°C - +50°C					

1/3
type

CS

Dimensions

M.O.D. : Minimum Object Distance



Wiring Diagram

PRESET POTENTIOMETER

