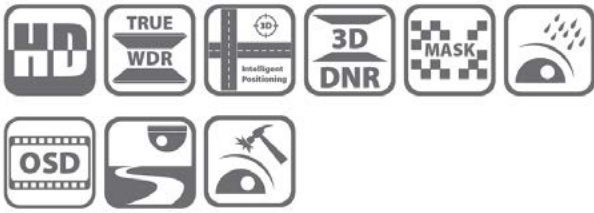


# AP312-OD

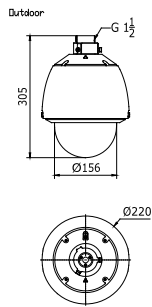
## 1080P TVI PTZ Dome Camera



### Key features

- 2MP CMOS Image Sensor
- Full HD 1080P Video Output
- 23X optical zoom, 16X digital zoom
- Support up the coax function
- Privacy Masking, 3D DNR, D WDR, EIS
- 3D intelligent positioning
- True Day&Night

### Dimensions



### Accessories



1602ZJ  
Wall Mount



1602ZJ-Corner  
Corner Mount



1661ZJ  
Pendant Mount



1663ZJ  
Ceiling Mount

	AR312-OD
<b>Camera</b>	
Image Sensor	1 / 3" CMOS
Effective Pixel	3270K
Horizontal Resolution	1100TVL
Signal System	PAL / NTSC
Min. Illumination	Color: 0.2Lux@( F1.6,AGC ON) ; B / W: 0.02Lux@( F1.6,AGC ON)
White Balance	Auto / Manual / ATW / Indoor / Outdoor
AGC	Auto / Manual
S / N Ratio	≥50dB
3D DNR	Support
Digital WDR	Support
EIS	Support
Backlight Compensation	Support
Shutter Time	PAL: 1-1 / 10,000s ; NTSC: 1-1 / 10,000s
Day & Night	IR Cut Filter
Digital Zoom	16x
Privacy Mask	8 privacy masks programmable; a maximum of 8 zones can be masked simultaneously on the same video screen
Focus Model	Auto / Semiautomatic / Manual
<b>Lens</b>	
Focal Length	4-92mm, 23X
Zoom Speed	Approx.3.0s(Optical Wide-Tele)
Angle of View	49-2.2 degree(Wide-Tele)
Min. Working Distance	10-1000mm (Wide-Tele)
Aperture	F1.6-F3.7
<b>Pan and Tilt</b>	
Pan Range	360° endless
Pan Speed	Pan Manual Speed: 0.1°-250° / s; Pan Preset Speed: 300° / s
Tilt Range	-5°-90° (Auto Flip)
Tilt Speed	Tilt Manual Speed: 0.1°-150° / s; Tilt Preset Speed: 200° / s
Proportional Zoom	Rotation speed can be adjusted automatically according to zoom multiples
Number of Preset	256
Patrol	8 patrols, up to 32 presets per patrol
Pattern	4 patterns, with the total recording time not less than 10 minutes
Power-off Memory	Support
Park Action	Preset / Patrol / Pattern / Pan scan / Tilt scan / Frame Scan / Random scan / Panorama scan
PTZ Position Display	On / Off
Preset Freezing	Support
Scheduled Task	Preset / Patrol / Pattern / Pan scan / Tilt scan / Frame Scan / Random scan / Panorama scan
RS-485 communication diagnosis	Support
<b>Input / Output</b>	
Monitor Output	1.0V[p-p] / 75Ω, NTSC (or PAL) composite, BNC
RS-485 Interface	Half-duplex mode; Self-adaptive HIKVISION, Pelco-P, Pelco-D protocol
UTC function	Self-adaptive PELCO_C, HDCAM_C(need UTC controller)
<b>General</b>	
Menu Language	English, Chinese
Power	24VAC; Outdoor dome: Max. 20W (Heater On), Max. 12W(Heater Off);
Working Temperature / Humidity	-30 °C-65°C(-22°F-149°F)(Outdoor dome) 90% or less
Protection Level	IP66 standard (outdoor dome) TVS 4,000V lightning protection, surge protection and voltage transient protection
Mounting	Various mounting modes optional
Dimensions	φ220×305mm (φ8.66"×12.00")(Outdoor);
Weight (approx.)	5Kg (11.02lbs)
Mount Option (only suitable for outdoor dome)	Long-arm wall mount; Corner mount Pole Mount; Power box mount
Weight	500g

### Winic Technologies USA Inc.

42 Central Avenue, Farmingdale, New York 11735

Tel: +631-396-0800

Fax: +631-396-0805

Email: sales@winictech.com

www.winictech.com

Design and specifications are subject to change without notice.