

Illuminated RTE Plates with Square Buttons

- SD-7202GC-PEQ** *Stainless-steel plate*
- SD-7202GC-PTQ** *Stainless-steel plate with timer*
- SD-7223GW-LQ** *Plastic white plate*

Features:

- Large illuminated pushbutton with caption "PUSH TO EXIT"
- Message language can be easily switched between English, Spanish, and French with 3 included interchangeable plates:



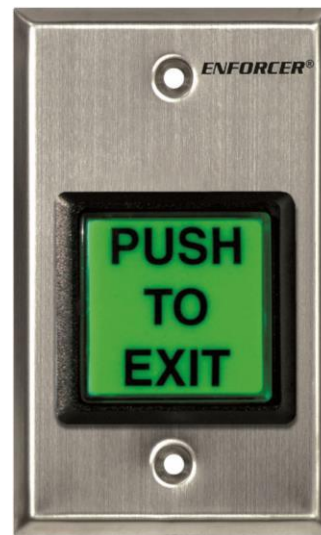
- Pushbutton rated 10A@125~250VAC (3A@24VDC for SD-7202GC-PTQ)
- Includes five colored 12-inch wire leads with easy-to-attach spade lugs for fast installation
- LED gives over 50,000 hours of illumination
- 12~24 VDC: No resistors required
- Includes stainless-steel single-gang plate

SD-7223GW-LQ only:

- White plastic single-gang plate

SD-7202GC-PTQ only:

- Timed output adjustable from 1~180 seconds
- Buzzer output for audible status



SD-7202GC-PEQ
SD-7202GC-PTQ



SD-7223GW-LQ

Wiring:

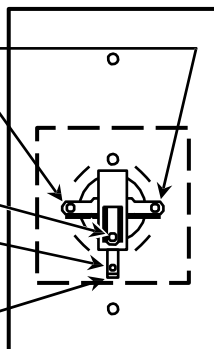
Pushbutton

Green wires (light)
(12VDC ~ 24VDC)

White wire (COM)
Max. 10A@125~250 VAC

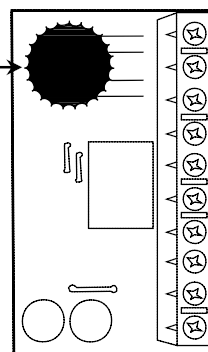
Blue/white wire (N.O.)
(Top Lug)

Green/white wire (N.C.)
(Bottom Lug)



Timer (SD-7202GC-PTQ only)

Timer Adjustment
Trimpot



- (-) (+)
 - (N.C.)
 - (N.O.)
 - (COM)
 - (COM)
 - (N.C.)
 - (N.O.)
 - Power Input 12~24 VAC or VDC (non-polarized)
- Buzzer Output
- Relay Output
- Trigger Input (Factory prewired)

SECO-LARM® U.S.A., Inc.

16842 Millikan Avenue, Irvine, CA 92606

Phone: (949) 261-2999 | (800) 662-0800 Fax: (949) 261-7326

Website: www.seco-larm.com Email: sales@seco-larm.com



Copyright 2015 © SECO-LARM U.S.A., Inc. All rights reserved. The SECO-LARM policy is one of continual development. For that reason, SECO-LARM reserves the right to change prices and specifications without notice. SECO-LARM is not responsible for misprints.

SECO-LARM® ENFORCER® CRIMEBUSTER® CBA SLI®