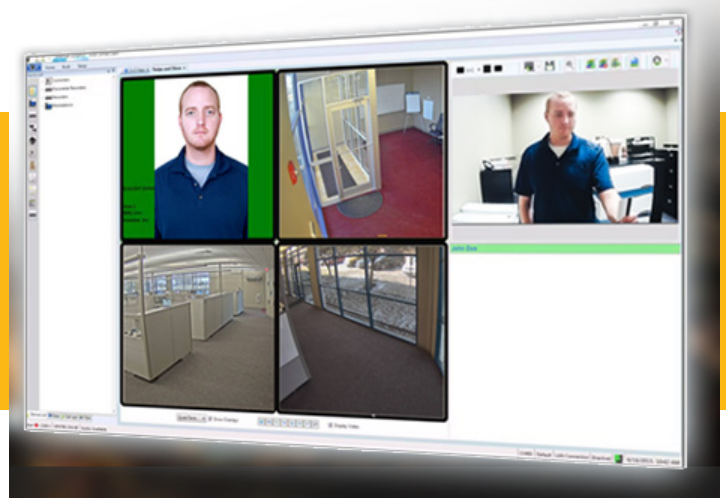


VideoEdge Facial Biometrics



Features That Make a Difference:

- Quick recognition of known faces including VIPs and unwanted persons
- Reduces investigation time with lightning fast forensic face searching
- Alerts operators to take immediate action when a face is detected
- Automatic facial matching across all enterprise locations
- No additional server required
- Instant visual notification of access control card misuse

Powerful Facial Biometrics

VideoEdge NVRs coupled with victor software provide video intelligence and analytics that greatly improve the efficiency of security officers and loss prevention (LP) investigators.

The face recognition feature can help spot pre-determined individuals including criminals, terminated employees, VIPs and other persons of identified interest. Further, VideoEdge facial biometrics alert operators to take immediate action.

Video Surveillance Facial Recognition

Utilizing VideoEdge facial recognition, users can add up to 1,000 faces per NVR database. Easily search for persons and visually see the associated corresponding video. Search across the entire enterprise to find facial matches. Index and capture faces for faster identification and investigations.

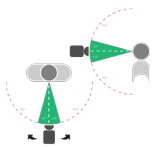
Facial Verification with Access Control

Used with victor Unified and C-Cure 9000 access control, the face verification feature can automatically determine when an access card is used by an unauthorized person.

Sophisticated Analytics Built-In

The facial biometrics engine is built-in to the powerful NVR so no additional server is required. Optimize your NVR with added facial biometrics to better recognize persons potentially causing threats at a lower cost.

For more information on video analytics, read our Video Intelligence and Analytics data sheet.



Frontal position – no more than +/- 15 degrees pan or tilt



Reduce motion with mounted and stable camera and subjects

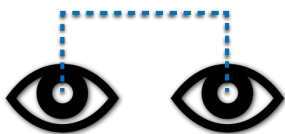


Limit faces in the scene. Avoid groups of people or facial imagery in the background



Avoid obstructions

50 Pixels



Eye pupil space should be at least 50 pixels resolution from eye to eye and at least 15% of the width of the scene



Ideal Lighting

- Even lighting on the face with no shadows
- Avoid backlighting that results in glares on glasses
- Keep away from direct sunlight
- Avoid top lighting that casts shadows over faces

Ideal Camera Settings

- High quality, low compression video stream
- Use larger sensors (.5" or larger)
- Reduce maximum exposure time to minimize motion blur
- High resolution, fast lenses or a fixed focal length lens
- Monochrome cameras provide better light sensitivity since color information is not used.

Enrollment Images Best Practices

- At least 5 or more images - face should be straight on, slightly turned left, slightly turned right, slightly tilted up, slightly tilted down
- Taken at close range (3' to 5')
- High resolution (at least 400 pixels on face)
- Neutral facial expression
- If person wears glasses, use mix of images with and without glasses

Illustra Camera Quick Reference Configurations



Model	Lens Focal Length	Mounting Height	Recognition Range	Recognition Area	Minimum Lux Level
AD i610-D521	40mm	Eye-level	5' - 16'	2' x 3'	0.45
AD i610-D011	9mm	Eye-level	2' - 7'	2' x 3'	8.5
AD i610-M111	4.3mm	Eye-level	1' - 3'	2' x 3'	2.5

Ordering Information

Model Numbers	Description
Video Surveillance Facial Recognition (Minimum 2 licenses required, camera license(s) & enrollment database license)	
ADVEFRC01	Single camera license. Used for systems with less than 10 facial recognition cameras
ADVEFRC10P	Single camera license. Used for systems with less than 30 facial recognition cameras
ADVEFRC30P	Single camera license. Used for systems with less than 50 facial recognition cameras
ADVEFRC50P	Single camera license. Used for systems with less than 100 facial recognition cameras
Enrollment Database License	
ADVEFRDB1000	Face recognition enrollment database license per site - Up to 1000 faces per database (1 enrollment license required per unique enrollment database deployed or replicated across NVRs)

Access Control Video Face Verification: Access Control Face Matching

ADVEFVC01	Single camera license. Used for systems with less than 10 facial verification doors
ADVEFVC10P	Single camera license. Used for systems with over 10 facial verification doors

Related Products



victor Unified Client



RAID Storage



Illustra IP Cameras



Software House C-CURE 9000

www.americandynamics.net