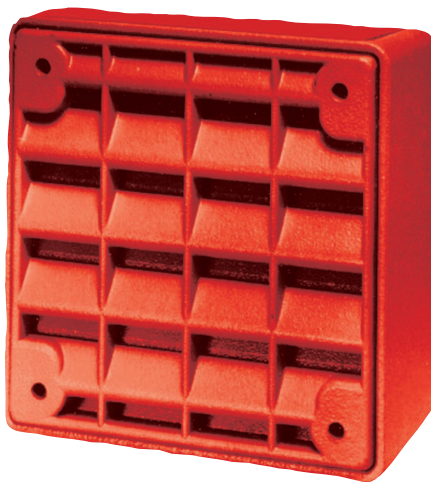


ET-1080-R Vandal-resistant Speaker (red)

www.boschsecurity.com



BOSCH
Invented for life



- ▶ 25 VRMS or 70 VRMS operation up to 8 W with w average current draw
- ▶ Extra protection and improved audibility through sealed-back speaker construction and vandal-resistant grill
- ▶ Compatible with SM and DSM Synchronization Modules
- ▶ Easy wiring with screw terminals
- ▶ Complies with RFI limits of FCC Part15, Class B for compatibility with sensitive detection and communication circuits

The Wheelock ET-1080-R Speakers meet the critical needs of the life safety industry for voice and tone signaling. They have a vandal-resistant die-cast grill and a sealed-back speaker for extra protection. The high-efficiency speaker is designed for multiple power requirements with high dBA output at each power tap. They provide a choice of field-selectable taps from 0.125 W to 8 W across a frequency range of 400 Hz to 4 kHz for either 25 V or 75 V audio systems.

Certifications and approvals

Cooper Wheelock Inc. holds these Listings and Approvals:

Region	Certification	
USA	UL	UEAY_S2652 - Speakers
	UL	UUKC_S5391 - Signaling Appliances and Equipment for the Hearing Impaired
	UL	UUMW_S2652 - Speakers and Amplifiers for Fire Protective Signaling Systems

Installation/configuration notes

Compatible Products

The following products are compatible with the ET-1080 Speakers:

Category	Product ID	Product Description
Control Panels	D7022 ¹	Conventional FACP
	D7024 ²	Addressable FACP
	D7024	Conventional FACP
	D8024 ¹	Analog FACP
	D9124 ¹	Addressable FACP
	D10024A ¹	Analog FACP
	FPD-7024 ²	Addressable FACP
Modules	FPD-7024	Conventional FACP
	SM-12/24-R	Synchronization module (red)
	DSM-12/24-R	Dual synchronization module (red)

These speakers are compatible with Bosch Voice Evacuation Systems (refer to the *Bosch Voice Evacuation Systems Datasheet*, P/N: 4998122679).

¹ For synchronization, use the SM or DSM modules with these control panels. The synchronization module must be set for 24 V operation. When used, the D7022 must be set for 24 VDC operation.

² When used with a D7039 Multiplex Expansion Module, the D7024 and FPD-7024 become addressable fire alarm control panels (FACPs).

Mounting

These speakers mount on the indicated back boxes for the indicated applications:

	Conduit Applications	Surface Mounted	Flush Mounted
Four-inch square*			•
SBB Back Box	•	•	

* Requires an SER extension ring.

Wiring

The input terminals accept wires with diameters between 18 AWG and 12 AWG (ISO 0.75 mm² and 4 mm²).

Parts included

Quantity	Component
1	Speaker
1	Hardware pack
1	Literature pack

Technical specifications

Electrical

Voltage (Input):	24 VDC nominal; 16 VDC or FWR to 33 VDC or FWR
------------------	---

Environmental

Relative Humidity:	Up to 85%, non-condensing
Temperature (Operating):	+32°F to +120°F (0° to +49°C)

Mechanical

Dimensions:	4.375 in. square x 4.125 in. deep* (11.1 cm square x 10.5 cm deep*)
Material:	Die-cast, high-impact plastic

* When used in flush-mount installations, the unit extends 1.9375 in. (4.9 cm) from the mounting surface.

Speaker dB at 10 ft (3 m)

1/8 W	78 dB
1/4 W	81 dB
1/2 W	84 dB

1 W	87 dB
2 W	89 dB
4 W	93 dB
8 W	96 dB

Ordering information

ET-1080-R Vandal-resistant Speaker (red)

The high-efficiency speaker is designed for multiple power requirements with high dBA output at each power tap. They provide a choice of field-selectable taps from 0.125 W to 8 W across a frequency range of 400 Hz to 4 kHz for either 25 V or 75 V audio systems. Order number **ET-1080-R**

Accessories

DSM-12/24-R Dual Synchronization Module (red)

A 12/24 VDC Cooper Wheelock module that synchronizes notification appliances on a single Class A or two Class B circuits.

Order number **DSM-12/24-R**

SM-12/24-R Single Synchronization Module (red)

A 12/24 VDC Cooper Wheelock module that synchronizes notification appliances on Class B alarm circuits.

Not Available.

Order number **SM-12/24-R**

SBB-R Surface-mount Back Box (red)

14 cm (5.5 in.) x 14.2 cm (5.6 in.) x 9.1 cm (3.6 in.)

Order number **SBB-R**

SFP-R Semi-flush Plate (red)

15.2 cm (6 in.) square by 0.8 cm (0.3125 in.) thick

Order number **SFP-R**

SSB-8 Ceiling Support Bridge

23.75 in. (60.3 cm) long by 14.5 in. (36.8 cm) wide

Order number **SSB-8**

Represented by:

Americas:

Bosch Security Systems, Inc.
130 Perinton Parkway
Fairport, New York, 14450, USA
Phone: +1 800 289 0096
Fax: +1 585 223 9180
security.sales@us.bosch.com
www.boschsecurity.us

Europe, Middle East, Africa:

Bosch Security Systems B.V.
P.O. Box 80002
5617 BA Eindhoven, The Netherlands
Phone: + 31 40 2577 284
Fax: +31 40 2577 330
emea.securitysystems@bosch.com
www.boschsecurity.com

Asia-Pacific:

Robert Bosch (SEA) Pte Ltd, Security
Systems
11 Bishan Street 21
Singapore 573943
Phone: +65 6571 2808
Fax: +65 6571 2699
apr.securitysystems@bosch.com
www.boschsecurity.asia

China:

Bosch (Shanghai) Security Systems Ltd.
201 Building, No. 333 Fuquan Road
North IBP
Changning District, Shanghai
200335 China
Phone +86 21 22181111
Fax: +86 21 22182398
www.boschsecurity.com.cn

America Latina:

Robert Bosch Ltda Security Systems Division
Via Anhanguera, Km 98
CEP 13065-900
Campinas, Sao Paulo, Brazil
Phone: +55 19 2103 2860
Fax: +55 19 2103 2862
latam.boschsecurity@bosch.com
www.boschsecurity.com