



N300 PoE Access Point (with software controller)

TEW-755AP (v1.0R)

- WiFi N300 PoE+ access point
- Access Point, Client, WDS AP, WDS Bridge, WDS Station, and Repeater modes
- Included software controller aids WiFi network management
- Gigabit PoE+ LAN port
- Off-white low profile housing blends into the environment
- Mounting plate

TRENDnet's high performance N300 PoE Access Point, model TEW-755AP, supports Access Point (AP), Client, Wireless Distribution System (WDS) AP, WDS Bridge, WDS Station, and Repeater modes. It generates a 300 Mbps WiFi N network and features a Gigabit PoE port. The included Windows-based software controller manages multiple TEW-755APs and reduces WiFi management/troubleshooting time. A low profile housing blends into most environments and a mounting plate eases installation.



Access Point Flexibility

Proven 300 Mbps WiFi N combined with AP, Client, WDS, and Repeater modes support multiple applications.



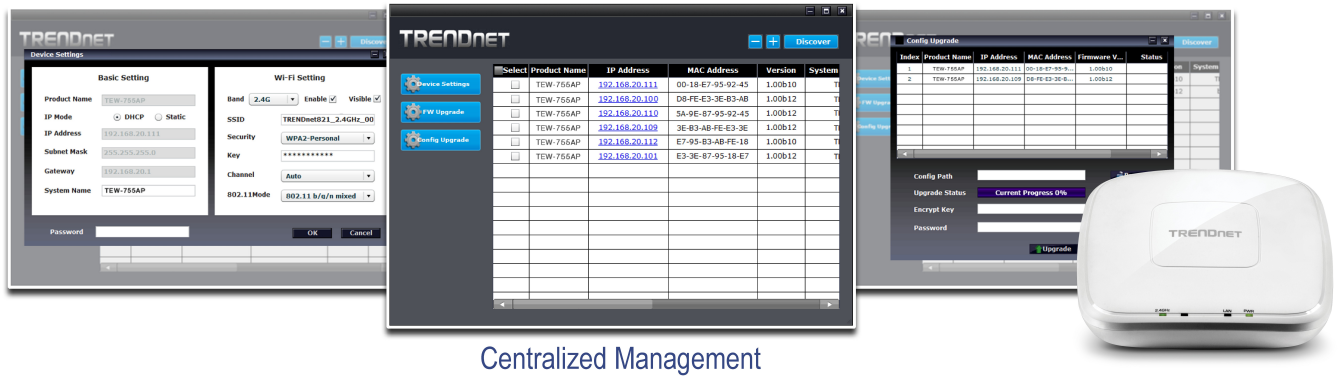
Centralized Management

The included Windows based software controller manages multiple TEW-755APs and reduces WiFi management and troubleshooting time.



Easy Installation

Saves remote location installation time and costs with Gigabit Power over Ethernet (PoE+) support and a convenient mounting plate.



Centralized Management

Networking Solution



- 1 Mounting plate
- 2 LED indicators (can be turned off)



- 3 Gigabit PoE LAN port
- 4 Optional power port for non-PoE installations

- 5 Reset button
- 6 Low profile off white housing





Multi-Language

Multi-Language Interface: English, Spanish, French, German, and Russian



Power over Ethernet (PoE+)

Saves remote location installation time and costs with Gigabit PoE+ support (Optional power port for non-PoE installations)



WiFi N300

Low profile access point delivers proven WiFi N300



Multi-Mode Support

Supports Access Point (AP), Client, WDS AP, WDS Bridge, WDS Station, and Repeater modes



Software Controller

The included Windows-based Software Controller manages multiple TEW-755APs and reduces WiFi configuration, management, and troubleshooting time



Gigabit Port

Gigabit PoE+ LAN port maintains high performance connections to the wired network



Wireless Coverage

Extended wireless coverage with MIMO antenna technology



Encrypted Wireless

Support for wireless encryption of up to WPA2



WiFi Traffic Shaping

Manage traffic allocation per VLAN



IPv6

IPv6 network support



Low Profile

Off white low profile housing blends into most environments



LED Control

Further reduce product visibility by turning off LED indicators



Mounting Plate

Mounting plate reduces installation time

Specifications

Standards

- IEEE 802.1Q
- IEEE 802.3
- IEEE 802.3u
- IEEE 802.3x
- IEEE 802.3ab
- IEEE 802.3at
- IEEE 802.11b
- IEEE 802.11g
- IEEE 802.11n (up to 300 Mbps)

Hardware Interface

- 1 x PoE+ Gigabit LAN port
- Power port (optional non-PoE installation)
- Reset button
- LED indicators
- Mounting plate

Special Features

- Software controller
- Concurrent Dual band
- Band Steering
- WiFi traffic shaping
- Beamforming
- 802.1Q VLAN assignment per SSID
- IPv6 support (Link-Local, Static IPv6, Auto-Configuration (SLAAC/DHCPv6))
- Multi-Language interface, English, French, Spanish, German, Russian
- LEDs on/off

Operation Modes

- Access Point
- Client
- WDS AP
- WDS Bridge
- WDS Station
- Repeater

Management/Monitoring

- Web-based management
- Software controller
- SNMP v1/v3
- STP
- Event logging
- Ping test
- Traceroute
- CLI

Software Controller

- Central management for multiple devices
- Wireless settings management
- Wireless security settings management
- Firmware upload

Software Controller Supported OS

- Windows® 8.1, 8, 7, Vista, XP

Access Control

- Wireless encryption: WEP, WPA/WPA2-PSK, WPA/WPA2-RADIUS
- MAC filter
- Maximum client limit

QoS

- WMM
- Traffic shaping per SSID

SSID

- Up to 8 SSIDs

Frequency

- 2.4 GHz: 2.412 – 2.472 GHz

Wireless Channels

- 2.4 GHz: FCC: 1-11, ETSI: 1 – 13

Modulation

- DBPSK/DQPSK/CCK for DSSS technique
- BPSK/QPSK/16-QAM/64-QAM/256-QAM for OFDM technique

Antenna Gain

- 2.4 GHz: 2 x 4 dBi

Wireless Output Power/Receiving Sensitivity

- 802.11b: FCC: 23 dBm (Max.), CE: 10 dBm (Max.) / -83 dBm (typical) @ 11 Mbps
- 802.11g: 19 dBm (Max.), CE: 12 dBm (Max.) / -65 dBm (typical) @ 54 Mbps
- 802.11n: FCC: 19 dBm (Max.), CE: 12 dBm (Max.) / -64 dBm (typical) @ 300 Mbps

EIRP

- 2.4 GHz: FCC: up to 30 dBm, CE: up to 19 dBm

Power

- 12 V / 1 A consumption: 9.6 Watts Max.

Operating Temperature

- 0 – 40 °C (32 – 104 °F)

Operating Humidity

- Max. 95 % non-condensing

Certifications

- CE
- FCC

Dimensions

- 187 x 187 x 46 mm (7.3 x 7.3 x 1.8 in.)

Weight

- 456 g (16 oz.)

Warranty

- 3 year limited

Package Contents

- TEW-755AP
- 5 ft. (1.5 m) network cable
- CD-ROM (Utility and User's Guide)
- Quick Installation Guide
- Power adapter (12 V DC, 1 A)
- Mounting bracket

