



Hardened Industrial 60 Watt Gigabit PoE+ Injector

TI-IG60 (v1.0R)

- Hardened IP30 rated Gigabit PoE Injector
- Supplies PoE (15 W), PoE + (30 W), high power PoE+ (36 W), or 60 Watt PoE power
- Network a PoE device located up to 100 meters (328 ft.) away
- Extreme -40 to 75 °C (-40 to 167 °F) operating temperature range
- Dual redundant power inputs with overload current protection
- Includes DIN-Rail and wall mounts
- Power supply sold separately (model TI-S12048)

TRENDnet's TI-IG60 is a reliable IP30 rated Industrial Gigabit PoE+ Injector with hardened components rated for extreme industrial environments. Connect the TI-IG60 to a non-PoE Gigabit switch and then run an Ethernet cable up to 100 meters (328 ft.) to network a PoE device. The TI-IG60 supplies power to a PoE (up to 15 W), PoE + (up to 30 W), high power PoE+ (36 W), or 60 Watt PoE device. Dual redundant power inputs (power supply sold separately: TI-S12048) with overload current protection support zero downtime applications. Both DIN-Rail and wall mount hardware is included.



Plug and Play
Plug and play PoE network devices



PoE
Supplies power to a PoE (up to 15 W), PoE + (up to 30 W), high power PoE+ (36 W), or 60 Watt PoE device



Gigabit Ports
1 x Gigabit Ethernet port and 1 x PoE+ Gigabit Ethernet port



Extension Distance
Extends a PoE network connection up to 100 meters (328 ft.)



DIP Switches
DIP Switch 1: 2- pair PoE/PoE+ or 4-pair 60/72 Watt PoE
DIP Switch 2: Mode A (endspan PD support) or Mode B (midspan PD support)
DIP Switch 3: PoE+ (30 Watt) or high power PoE+ (36 Watt)
DIP Switch 4: Reserved



DIN-Rail/Wall Mounts
IP30 rated metal enclosure with included DIN-Rail and wall mount hardware



Redundant Power
Dual redundant power inputs with overload current protection (power supply sold separately: model TI-S12048)



Extreme Temperatures
Hardened converter is rated for an operating temperature range of -40 to 75 °C (-40 to 167 °F)



Electro Magnetic Compliance
Complies with FCC Part 15 Subpart B Class A and CE EN 55022 Class A standards



Certifications
Rated for information technology (ITE) equipment (EN55022/24) and industrial, scientific, and medical (ISM) Equipment (EN55011)



Shock and Vibration Resistant
Rated for shock (IEC 60068-2-27), freefall (IEC 60068-2-32), and vibration (IEC 60068-2-6)

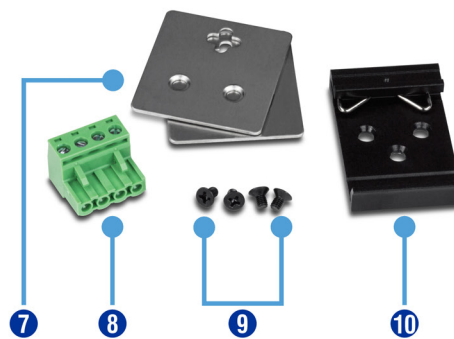
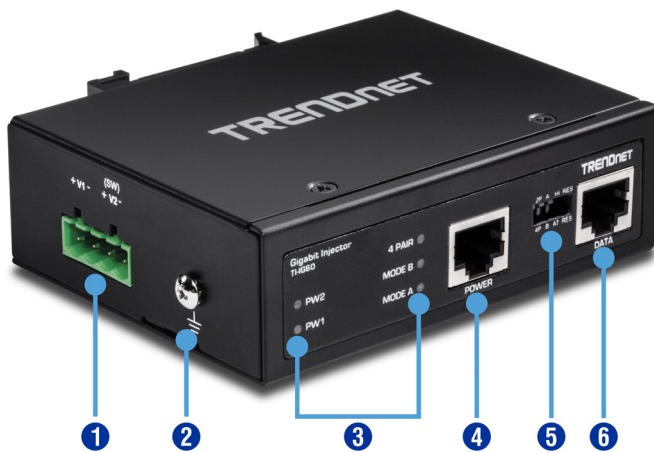


Grounding Point
Grounding point protects equipment from external electrical surges



LED indicators
LED indicators confirm PoE and network connectivity

Networking Solution



- 1 Terminal block slot
- 2 Grounding point
- 3 LED indicators
- 4 Gigabit PoE+ port
- 5 DIP switch
- 6 Gigabit port
- 7 Wall mounting kit
- 8 Terminal block
- 9 Screws
- 10 DIN-Rail mount

Specifications

Standards

- IEEE 802.3
- IEEE 802.3u
- IEEE 802.3ab
- IEEE 802.3af
- IEEE 802.3at

Device Interface

- 1 x Gigabit port
- 1 x PoE+ Gigabit port
- 4-pin removable terminal block
- LED indicators
- DIN-Rail mount
- Wall mount
- Grounding point

Data Transfer Rate

- Ethernet: 10 Mbps (half duplex), 20 Mbps (full duplex)
- Fast Ethernet: 100 Mbps (half duplex), 200 Mbps (full duplex)
- Gigabit: 2000 Mbps (full duplex)

Special Features

- Hardened components rated for extreme temperatures
- Dual redundant power inputs
- Auto-Negotiation
- ESD 8 KV and Surge 6 KV protection

Power

- Input: 48 – 56 V DC
- Compatible power supply: TI-S12048 (sold separately)
- Consumption: Max. 72 Watts

PoE

- PoE budget: 60 Watts
- Pin 1,2 for power+ and pin 3,6 for power- (mode A)
- Pin 4,5 for power+ and pin 7,8 for power- (mode B)

DIP Switch

- 2 pairs (30 / 36 watts) or 4 pairs (60 / 72 watts)
- Mode A or Mode B
- High or standard power
- Reserved (no function)

Terminal Block

- Redundant power inputs, 4 pin
- Wire range: 0.34 mm² to 2.5 mm²
- Solid wire (AWG): 12-24/14-22
- Stranded wire (AWG): 12-24/14-22
- Torque: 5 lb. – In / 0.5 Nm / 0.56 Nm
- Wire strip length: 7 – 8 mm

MTBF

- 510,304 hours

Housing

- IP30 metal case
- DIN-Rail mount
- Wall mount

- Grounding point
- 8 KV ESD protection
- 6 KV surge protection

Operating Temperature

- - 40 to 75 °C (-40 to 167 °F)

Operating Humidity

- Max. 95 % non-condensing

Dimensions

- 104 x 82 x 32 mm. (4.1 x 3.2 x 1.2 in.)

Weight

- 138 g (4.8 oz.)

Certifications

- CE
- FCC
- IEC EN60950-1
- Shock (IEC 60068-2-27)
- Freefall (IEC 60068-2-32)
- Vibration (IEC 60068-2-6)

Warranty

- 3 year limited

Package Contents

- TI-IG60
- Quick Installation Guide
- Removable terminal block
- DIN-Rail and wall mount kit

