





Quick Installation Guide  

TK-214i
1.01

Table of Contents

English	1
1. Before You Start	1
2. How to Install	2
3. Operation	3
4. Using the KVM Utility	4
Technical Specifications	10
Troubleshooting	11



Package Contents

- TK-214i
- Multi-Language Quick Installation Guide
- CD-ROM (Utility)

System Requirements

- USB Keyboard
- USB Mouse
- DVI Compatible Monitor
- Computers with DVI-I port
- Computers with USB Ports
- Computers with 3.5mm audio and microphone connections (optional)
- Speakers (Optional)
- Microphone (Optional)
- Windows 7(32/64-bit)/Vista (32/64-bit)/XP (32/64-bit)/2000/2003 Server/ME/98SE, Linux, and Mac OS.

Software Utility Requirements

Supported Operating Systems	CPU	Memory
Windows 7 (32/64-bit)	1GHz or above	1GB RAM or above
Windows Vista (32/64-bit)	800MHz or above	512MB RAM or above
Windows XP (32/64-bit)	300MHz or above	256MB RAM or above
Mac OS X (10.6)	Intel Processor	1GB RAM or above
Mac OS X (10.5)	867MHz or above	512MB RAM or above
Mac OS X (10.4)	333MHz or above	256MB RAM or above

2. How to Installation

1. Properly turn OFF your computers and monitors.

2. Connect the shared keyboard, monitor, mouse, speakers (optional) and microphone (optional) to the KVM Switch's console ports.



3. Use the integrated KVM cables and Audio/Microphone cable (Optional) to connect your Computer to the KVM Switch.



To Computer



Computer 1

4. Turn ON the first computer and wait until startup completes.

5. Press the push button on the remote switch to select the second computer (Optional).



6. Turn ON the second computer and wait until startup completes.



Computer 2

Your installation is now complete

ENGLISH

Français

Deutsch

Español

Русский

3. Operation

ENGLISH

FRANÇAIS

DEUTSCH

ESPAÑOL

РУССКИЙ

Note:

1. The TK-214i KVM Switch does not require any drivers or software (optional).
2. For Computer switching, you can use the push button switch, a Hot-Key command sequence via keyboard, or the KVM utility (Windows / Mac OS X (10.4~10.6) only). For more information on the KVM utility, please see section 4, Using the KVM Utility. Installing and using the KVM utility is optional.

Push button switch



Press the push button switch to switch to the other computer.

Hot-Key Command Sequence

After pressing the **Scroll Lock** key, you have 2 seconds to press the **Scroll Lock** key again. If you do not press a key within 2 seconds, the switch will exit hot-key mode.

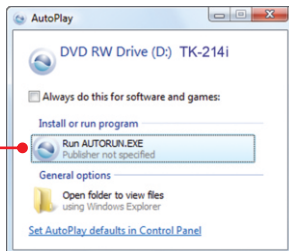
Universal Hot-Key Command

Command	Hot-Key	Description
Select Computer	Scroll Lock + Scroll Lock	Switch to the other computer

For Windows Users

1. Insert the Utility CD-ROM into your CD-ROM Drive.

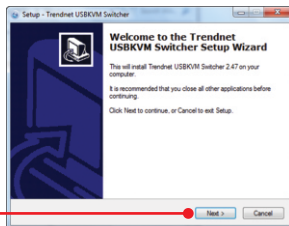
2. Click **Run AUTORUN.EXE**
(Windows 7/Vista Only)



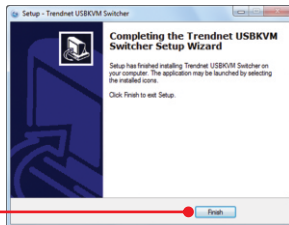
3. Click **Install Utility.**



4. Click **Next**. Then follow the **Setup Wizard** instructions.



5. Click **Finish**.



6. Double click on the USB KVM Switcher icon.



7. If you would like to modify the hot key, type in a character. You can enter any number, letter or symbol. Control keys such as Alt, Ctrl, Shift, CAPS LOCK, Tab, Esc, and Num Lock and function keys cannot be used. Example: CTRL + ALT + A.

8. Click on the check box for Fix Audio to a port and then select the port from the dropdown list.

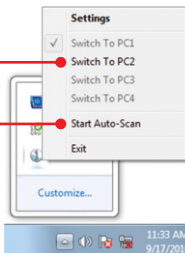
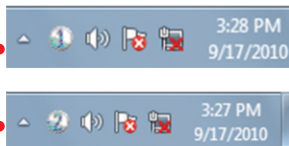
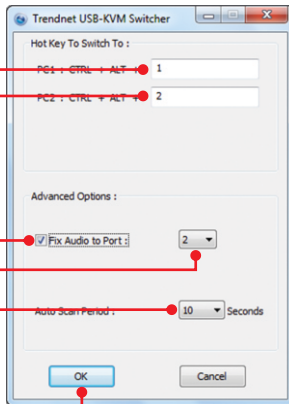
9. Select a desired Auto Scan period (10~60). Options are in increments of 5 seconds.

10. Once you made all desired changes, then click **OK**.

11. Right click on the KVM utility icon in the system tray. If your computer is connect to computer 1 port, you should see an icon with the number 1. If your computer is connected to computer 2, you should see an icon with the number 2.

12. Select the PC that you want to switch to.

13. Click **Start Auto-Scan** to start Auto-Scan. Right click the KVM Utility icon and select **Stop Auto-Scan** to stop Auto-Scan.



For Mac OS X (10.4~10.6) Users

1. Insert the Utility CD-ROM into your CD-ROM Drive.

2. Double-click on the TK-214i CD-ROM icon on your desktop.



3. Double-click on the Macintosh folder.



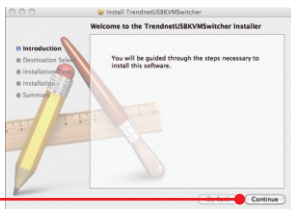
Macintosh

4. Double-click on on TrendnetUSBKVM Switcher.pkg.

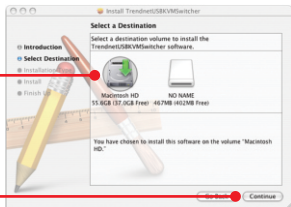


TrendnetUSBKVM
witcher.pkg

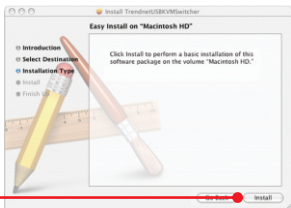
5. Click **Continue**.



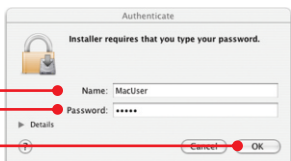
6. Select a destination and then click **Continue**.



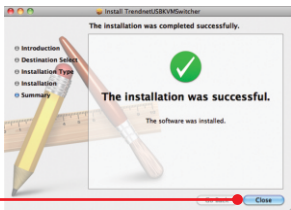
7. Click **Install**.



8. When the **Authenticate** screen appears, enter the **Name** and **Password** for your computer and then click **OK**.



9. Click **Close**.



10. Double click on the Macintosh HD icon.



11. Double click on the Applications icon.



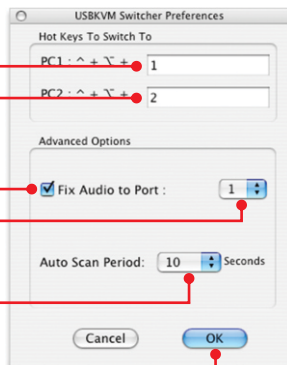
12. Click on Trendnet USB-KVM Switcher.



13. Double click on the USB-KVM Switcher icon in the Dock. If your computer is connect to computer 1 port, you should see an icon with the number 1. If your computer is connected to computer 2, you should see an icon with the number 2.



14. If you would like to modify the hot key, type in a character. You can enter any number, letter or symbol. Control keys such as Alt, Ctrl, Shift, CAPS LOCK, Tab, Esc, and Num Lock and function keys can not be used. Example: CTRL + ALT + A.



15. Click on the check box for Fix Audio to a port and then select the port from the dropdown list.

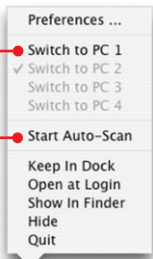
16. Select a desired Auto Scan period (10~60). Options are in increments of 5 seconds.

17. Once you made all desired changes, then click **OK**.

18. Right click on the KVM Utility icon in the dock. If your computer is connect to computer 1 port, you should see an icon with the number 1. If your computer is connected to computer 2, you should see an icon with the number 2.

19. Select the computer that you want to switch to.

20. Click **Start Auto-Scan** to start Auto-Scan. Right click the KVM Utility icon and select **Stop Auto-Scan** to stop Auto-Scan.



Your installation is now complete

For detailed information regarding the **TK-214i**, configuration and advanced settings, please refer to the Troubleshooting section, User's Guide on the Utility CD-ROM, or TRENDnet's website at <http://www.trendnet.com>.

Register Your Product

To ensure the highest level of customer service and support, please take a moment to register your product Online at: www.trendnet.com/register

Thank you for choosing TRENDnet

Technical Specifications

Hardware	
Controls	2 Computers
Cable	2 Sets of USB, DVI, audio, and mic. combination cables (length 80 cm, 2.6 ft.)
Computer Connectors	2 x USB Type A ports (male) 2 x DVI-I (male) 2 x 3.5mm audio plug 2 x 3.5mm mic. plug
Console Connectors	1 x DVI port (female) 2 x USB type A ports (female) 1 x 3.5mm audio port 1 x 3.5mm mic. port
Port Selection	Push Button switch (with 1.45 m, 57 in. cable length) Hot Key commands and Auto Scan
Video Resolution	DVI-I 1920 x 1200
Power Type	USB Bus Powered
LED	2 x Status Indicator
Dimensions	89 x 64 x 25 mm (3.5 x 2.5 x 1.0 in.)
Weight	431 g (15.2 oz.)
Temperature	Operating: 0° ~ 40° C (32° ~ 104° F) Storage: -20°C ~ 60°C (-4°F ~140°F)
Humidity	Max. 90%, (non-Condensing)
Certifications	CE, FCC

1. Where is the power supply? I did not find one in the box.

The TK-214i does not require a power supply. It draws power from your computer's USB connections. As long as your KVM switch is connected to the USB port, it will receive the necessary power to function.

2. I have the TK-214i connected properly, but my keyboard and mouse don't work.

1. Make sure your USB ports are working properly by connecting your mouse and keyboard directly to the USB ports on your computers.
2. Once you confirm that your computer's USB port is functional, please reboot all computers, and try to use the KVM switch again.

3. Can I connect and disconnect the USB cables while the computers are turned on?

Yes, you can connect or disconnect the USB cables while the computers are turned on, because the USB interface is Plug-and-Play and Hot-Pluggable.

4. Will the KVM switch remember the keyboard settings between computers?

Yes, the KVM switch will remember the keyboard settings when switching between your computers. (i.e.: Caps lock, Num Lock, etc.)

5. How do I switch from one computer to another with the KVM switch?

PC User: Push button switch ,Universal Hot-Key Commands or USB KVM Switcher Software

Mac User: Push Button switch or USB KVM Switcher Software

[Mac OS X (10.4~10.6)]

Linux User: Push Button switch or Universal Hot-Key Commands

If you still encounter problems or have any questions regarding the **TK-214i**, please contact TRENDnet's Technical Support Department.

Declaration of Conformity



Company Information:

Company Name:
TRENDnet, Inc.

Company Address:
20675 Manhattan Place
Torrance, CA 90501
USA

Product Information:

Product Description:
2-Port DVI USB KVM Switch Kit with Audio



Model Number:
TK-214i

Brand name:
TRENDnet

Technical Standards:

EN 55022 : 2006 + A1 : 2007
EN 55024 : 1998 + A1 : 2001 + A2 : 2003

Declaration:

The product is herewith confirmed to comply with the requirements of Directive 2004/108/EC of the Council (European Parliament) on the EMC directive.

I hereby declare that the products and devices mentioned above are consistent with the standards and provisions of the guidelines.

Sonny Su

Full Name

October 25, 2010

Date

Director of Technology

Position / Title

Signature

Certifications

This equipment has been tested and found to comply with FCC and CE Rules.

Operation is subject to the following two conditions:

- (1) This device may not cause harmful interference.
- (2) This device must accept any interference received. Including interference that may cause undesired operation.



Waste electrical and electronic products must not be disposed of with household waste. Please recycle where facilities exist. Check with you Local Authority or Retailer for recycling advice.



NOTE: THE MANUFACTURER IS NOT RESPONSIBLE FOR ANY RADIO OR TV INTERFERENCE CAUSED BY UNAUTHORIZED MODIFICATIONS TO THIS EQUIPMENT. SUCH MODIFICATIONS COULD VOID THE USER'S AUTHORITY TO OPERATE THE EQUIPMENT.

ADVERTENCIA

En todos nuestros equipos se mencionan claramente las características del adaptador de alimentación necesario para su funcionamiento. El uso de un adaptador distinto al mencionado puede producir daños físicos y/o daños al equipo conectado. El adaptador de alimentación debe operar con voltaje y frecuencia de la energía eléctrica domiciliar existente en el país o zona de instalación.



Product Warranty Registration

Please take a moment to register your product online.
Go to TRENDnet's website at <http://www.trendnet.com/register>