

Q31

0.46MP Thermal Bullet with Extreme WDR, Fixed Lens



- Uncooled microbolometer thermal sensor
- 25/30 fps at full D1 resolution
- Fixed Lens with f20mm / F1.0, Manual Focus
- Extreme WDR
- Two-way audio
- Video Motion Detection
- Digital input and digital output
- Weatherproof (IP68) and Vandal Proof metal casing (IK10), NEMA 4X

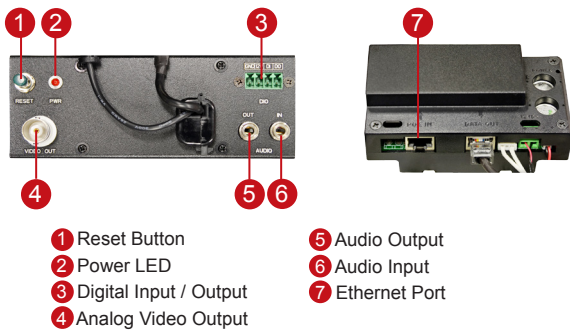
FEATURE INTRODUCTION

Motion Notification

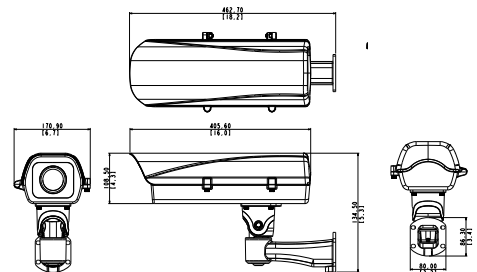


Motion Notification senses suspicious activities in the surrounding and trigger the speed dome to track the suspicious object by capturing motion of heat. This feature is suitable to perimeter control applications to detect objects that are difficult to reach in insufficient lighting conditions. The motion notification helps to maximize the ability to secure areas by collaborating speed dome camera with multiple thermal imagers. ACTi IVS server also provides intelligent video analytics like line-crossing, enter area, and loitering for more precise area protection.

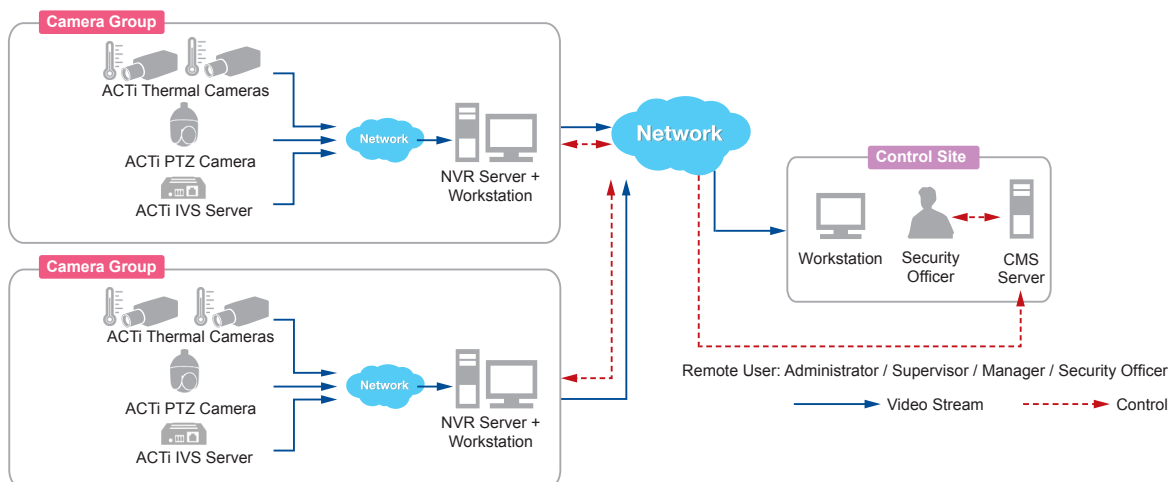
PHOTO INDICATION



DIMENSION DIAGRAM



SOLUTION ARCHITECTURE



PRODUCT SPECIFICATION

Q31

• Device

Device Type	Thermal Bullet Camera
Image Sensor	LWIR, Uncooled a-Si microbolometer
Effective Pixels	384 (H) x 288 (V)
Thermal Sensitivity (NETD)	80mK @f/1.0, 50Hz, 300K
Spectral Range	8-14um
Color Palette	10 different color palettes

• Lens

Focal Length / Aperture	Fixed focal, f20mm / F1.0
Iris	Fixed
Mount Type	Board Mount
Focus	Manual
Horizontal Viewing Angle	27°

Observation Range

Detection	People: 453.33m Vehicle: 826.67m
Recognition	People: 170m Vehicle: 310m
Identification	People: 90.67m Vehicle: 165.33m

• Video

Compression	H.264, MJPEG
Max. Frame Rate vs. Resolution	NTSC: 30 fps at 960 x 480; 30 fps at 720 x 480 PAL: 25 fps at 960 x 576; 25 fps at 720 x 576
Multi-Streaming	Simultaneous dual streams based on two configurations
Bit Rate	28 Kbps - 6 Mbps (per stream)
Bit Rate Mode	Constant, Variable
Wide Dynamic Range	Extreme WDR
Privacy Mask	4 Configurable regions
Text Overlay	User defined text on video
Image Enhancement	Extreme WDR; Brightness; Saturation; Contrast; Sharpness; Automatic gain control
Image Orientation	Image flip; image mirror

• Audio

Compression	8 kHz, Mono, PCM, 16 bit encoding, G.711
Audio-In / Audio-Out	1 / 1, 3.5mm phone Jack

• Network

Protocol & Service	TCP, UDP, HTTP, HTTPS, DHCP, PPPoE, RTP, RTSP, IPv6, DNS, NTP, ICMP, ARP, IGMP, SMTP, FTP, UPnP, SNMP, Bonjour, IEEE 802.1X
Ethernet Port	1, Ethernet (10/100 Base-T), RJ-45 connector
Security	IP address filtering; HTTPS encryption; Password protected user levels; IEEE 802.1x network access control; Anonymous login

• Alarm

Alarm Trigger	Video motion detection (9 regions), External device through digital input, Sound detection
Alarm Response	Notify control center, Change camera settings, Command other devices, E-mail notification with snapshots, Upload video or snapshot to FTP server, Activate external device through digital output

• Interface

Analog Video Output	1, CVBS, 1.0Vp-p with 75Ω BNC connector
Digital Input / Output	1 / 1, terminal blocks

• General

Power Source / Consumption	High PoE / 60W
Weight	3.892 kg (8.582 lb) (camera and bundle bracket)
Dimension (L x W x H)	462.7 * 170.9 * 134.5 mm (camera with bundled bracket)
Environmental Casing	Weatherproof (IP68), Vandal proof metal casing (IK10)
Bundled Accessory	Integrated bracket
Mount Type	Surface, wall, pole
Starting Temperature	-40°C ~ 45°C (-40°F ~ 113°F) within 30mins
Operating Temperature	-40°C ~ 45°C (-40°F ~ 113°F)
Operating Humidity	10% ~ 85% RH
Approvals	CE (EN 55022 Class B, EN 55024), FCC (Part15 Subpart B Class B), IP68, IK10 (metal casing), NEMA 4X, UL (for bundled power adapter)

• Integration

Unified Solution	Fully compatible with ACTi software
ISV Integration	Software Development Kit (SDK) available, ONVIF compliant
GPS Position	Manual setting
Firmware Access Browser	Microsoft Internet Explorer 8.0 or newer (full functionality); Safari with QuickTime installed, and other browsers with VLC installed (partial functionality)