

# Telepathy™

## Graphical Mapping, Command & Control Client

### DATA SHEET

Keri's **Telepathy™** is a powerful, new graphical mapping, command and control client that is provided free of charge with purchase of **Doors.NET™**

Telepathy allows users to graphically plot on a map-styled representation of their building:

- Doors
- Alarm points
- Outputs
- Control equipment

Optional connections are capable through the purchase of additional connection clients. Customizable icons are dragged onto your floor maps to represent their physical location. Once linked to hardware, they can be triggered with the click of a mouse to meet a variety of threats, and incorporate sound alerts to ensure you never miss an event.

The Map Diagram Editor lets a user easily import images of their building or buildings including associated floor plans.

The Map Client allows a user to monitor multiple concurrent Doors.NET databases/Sites in real time, from one Telepathy Client.



### Features:

- Display aerial, exterior, or cross-sectional views of your buildings along with individual floor plans to provide a comprehensive visualization of your system
- Interactive status icons notify operators to important predefined alert conditions
- Control of hardware via icons that are linked to doors, inputs etc.
- Initiate pre-configured Situation Manager actions such as Global Unlock or Emergency Lockdown
- Interfaces with Access Control, Roll Call and Mustering, Video, Intrusion, and Fire Systems
- Manage multiple sites from one Client
- View and act on current alerts
- View historical event information
- Customizable dynamic sensor icons
- Animated alerts with sound to ensure you don't miss an event, and can be configured to require a password
- Interactive floor plans
- Interface with Enrolment Readers
- Manage First Person In
- Dockable windows for multiple monitor use



2305 Bering Drive • San Jose, California 95131  
408-435-8400 • Toll Free: 800-260-5265 • Fax: 408-577-1792

# Telepathy™ Graphical Mapping, Command & Control Client

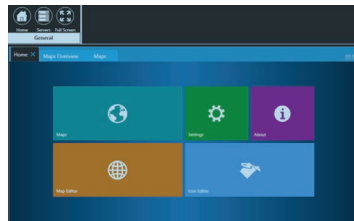
DATA SHEET, Page 2 of 2

## Specifications:

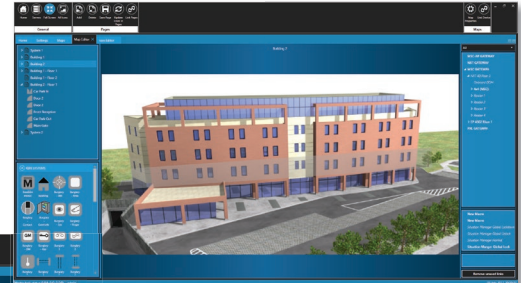
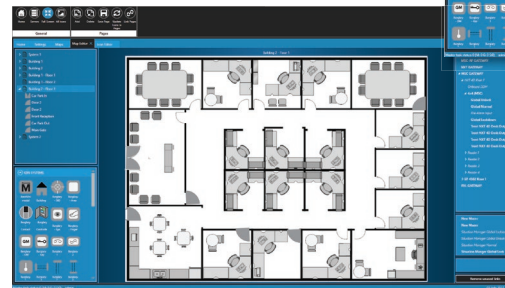
### General Requirements:

- Telepathy requires Doors.NET 4.0.1 or later to be installed
- The usage of customized linkage buttons require local and/or global linkage licensing on the host Doors.NET software installation
- The usage of predefined situational changes requires a licensed instance of Situation Manager on host Doors.NET software installation
- Customized icons must be saved in .PNG format prior to use in Telepathy
- Maps and building images must be saved in .PNG format prior to use in Telepathy
- Operating System Requirements are Windows 8.1 or later or Server 2012 or later
- The maximum number of map layers is 50
- If maps and icons are needed on multiple work stations, they must be stored locally on each PC
- Multiple monitors can be used but are restricted by the host PC's performance, operating system limitation and graphics card capabilities

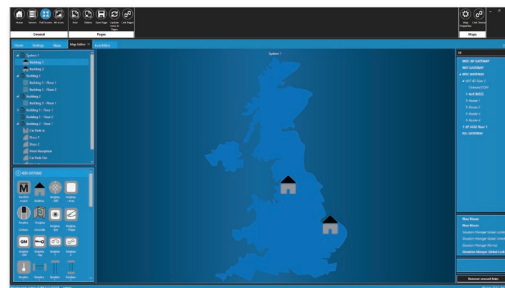
*Specifications are subject to change without notice.*



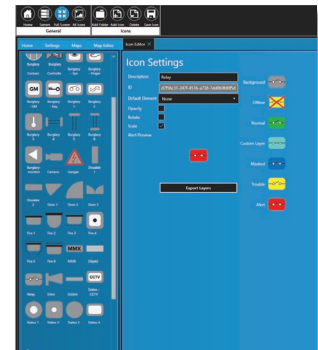
*Intuitive graphics expedite set-up.*



*Easily import images with the Map Diagram Editor. Display aerial, exterior, or cross-sectional views of buildings along with individual floor plans to provide a comprehensive visualization of the security system.*



*Manage multiple sites from one Telepathy Client, allowing initiation of pre-configured Situation Manger actions such as Global Unlock or Emergency Lockdown on more than one facility.*



*Intuitive graphics and icons help prevent confusion and allow for easy training.*

### ORDERING INFORMATION:

Product Name	Description
Telepathy	Free with Doors.NET Graphical Mapping, Command and Control Client

### RELATED PRODUCTS:

Product Name	Description
DNET-TPY-CL	Telepathy-Additional Client
DNET-TPY-SVR	Telepathy-Add App Server
DNET-TPY-GBL	Telepathy-Global License



Presented By: