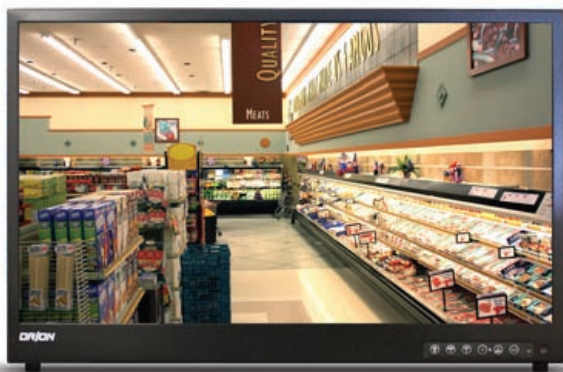


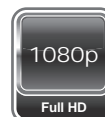
LED

FULL HD 1080p



SPECIAL FEATURES

- 1920 x 1080p Full HD
- Lightweight, Slim design
- Eco-Friendly
- 1000:1 Contrast Ratio, 250 NITS
- PIP / PBP Multi Display Function
- 3D Comb Filter, Deinterlace, Noise Reduction, LCD Protection Glass, Auto Source Sequencing, Trigger Source Switching, Auto Power Recovery
- BNC Video 2 In / 2 Out, S-Video 1 In / 1 Out, VGA 1 In, Component 1 In, DVI-D 1 In, HDMI 2 In, Audio 2 In, PC Stereo 1 In
- Built-In Speakers



SPECIFICATIONS

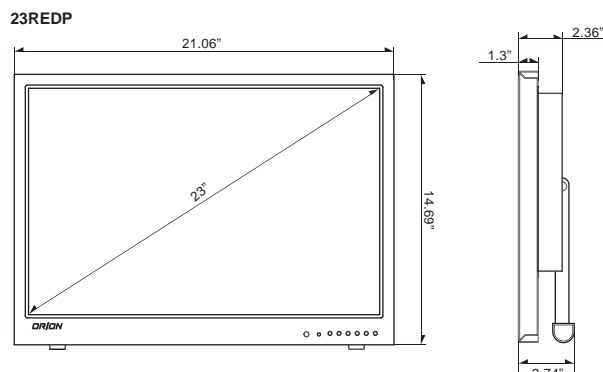
23REDP		
Display	Screen Size	23 Inch
	Back Light Unit type	LED
	Max. Resolution	1920 x 1080 @ 60Hz
	Pixel Pitch	0.265 x 0.265mm
	Brightness	250cd/m ²
	Contrast Ratio	1000 : 1
	Aspect Ratio	16 : 9
	Viewing Angle (H/V)	170° / 160°
	Display Color	16.7 Million
	Response Time	< 5ms
	Video System	NTSC / PAL
Interface	Video In / Out (BNC Type)	2 / 2
	S-Video In / Out	1 / 1
	VGA In (15Pin D-Sub)	1
	Component	1
	DVI-D In / HDMI In	1 / 2
	Audio In (RCA Type)	3 (L+R)
	PC Stereo In	1
Transmitter	Remote Control	Yes
Audio	Built-in Speakers	Yes (2W x 2)
Features	Picture In Picture (PIP)	Analog / Digital or Analog / Analog
	Picture By Picture (PBP)	Analog / Digital or Analog / Analog
	Filter Type	3D Comb Filter, Deinterlace, Noise Reduction
	Trigger Sensor	Yes (NO / NC)
	LCD Protection Glass	Yes
	Auto Power Recovery	Yes
	Auto Source Sequencing	Yes
	Multi Language	English, Spanish, French, German, Italian
Dimension	Outline Dimension (W x H x D)	21.06" x 14.69" x 3.74"
	Net. Weight	7.1 Kg (15.6 lbs)
Cabinet	Material / Color	Metal / Black
	Base Stand	Folding Leg
Warranty	Part/Labor	2year / 2year
	MTBF (Approx.)	30,000 Hours
Regulations		RoHs, TUV NRTL, CB, FCC(A), CE-Emc(LVD)
Power	Consumption: < On	< 50W
	Electrical Ratings	AC100 ~ 240V(50/60Hz) DC 12V / 4.2A
Circumstance	Operating Temperature	0 ~ 50°C / 32 ~ 122°F
	Storage Temperature	-20 ~ 60°C / -4 ~ 140°F
Mounts	VESA™ Mount Size	100 x 100mm
	Wall	WB-5, WB-10, WB-30, WB-31
	Ceiling	CMK-01

*Design and specifications are subject to change without notice

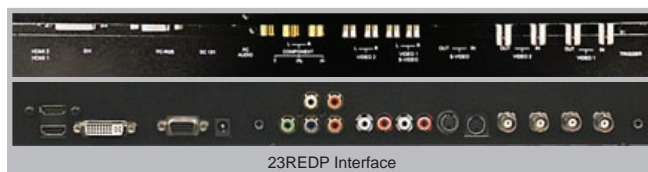
DESCRIPTION

The ORION LCD w/ LED BLU (backlight unit) high brightness displays are a truly professional experience in next generation technology using eco-friendly material (no mercury or halogen). This technology exceeds the NTSC color gamut standard of 100% with the LED BLU at 123% to provide a wider range of colours than ever before – you will see colors on screen as you see them in real world.

DIMENSIONS



OTHER VIEW



23REDP Interface



Rear View



Side View