

H.264 INDOOR DOME NETWORK CAMERA


PixelPro **SERIES**

ZN-D2MAP / ZN-D1MAP / ZN-D1A

| **USER'S MANUAL**

Before connecting, operating or adjusting this product,
read this instruction booklet carefully and completely



1. Product Features	4
2. Install camera	7
3. Accessing the Camera	8
2.1 Access from a Web Browser.....	8
2.2 Accessing the Camera from the Internet.....	8
2.3 Adjusting the Camera Direction.....	9
2.4 Adjusting the Image and Focus.....	9
2.4 Adjusting the Image and Focus (cont' d).....	10
2.5 Live View.....	11
2.6 Video stream types.....	11
2.7 How to Stream H.264.....	12
3. Setup	13
4. Installation	13
4.1 Installation Mode.....	13
5. Camera and Image	14
5.1 Video Codec.....	14
5.2 Camera.....	17
5.2.1 Exposure Control.....	17
5.2.2 Day & Night Control.....	18
5.2.3 White Balance Control.....	18
5.2.4 Image Property Control.....	19
6. Audio	19
7. Live	20
8. SD Card	21
8.1 Configuration.....	21
8.2 Event.....	22
8.3 Periodical.....	23
9. FTP	24
9.1 Configuration.....	24
9.2 Event.....	24
9.3 Periodical.....	25
10. Event	26
10.1 Alarm Port.....	26
10.2 Motion.....	27
10.3 Mapping.....	28

11. Network	29
11.1 IP Setup	29
11.2 Service Port	31
11.3 RTP	32
11.4 E-mail	33
11.5 DDNS	34
11.6 UPnP	35
12. System.....	37
12.1 User	37
12.2 Date & Time	37
12.3 Maintenance	38
12.4 Information	40

1. Product Features

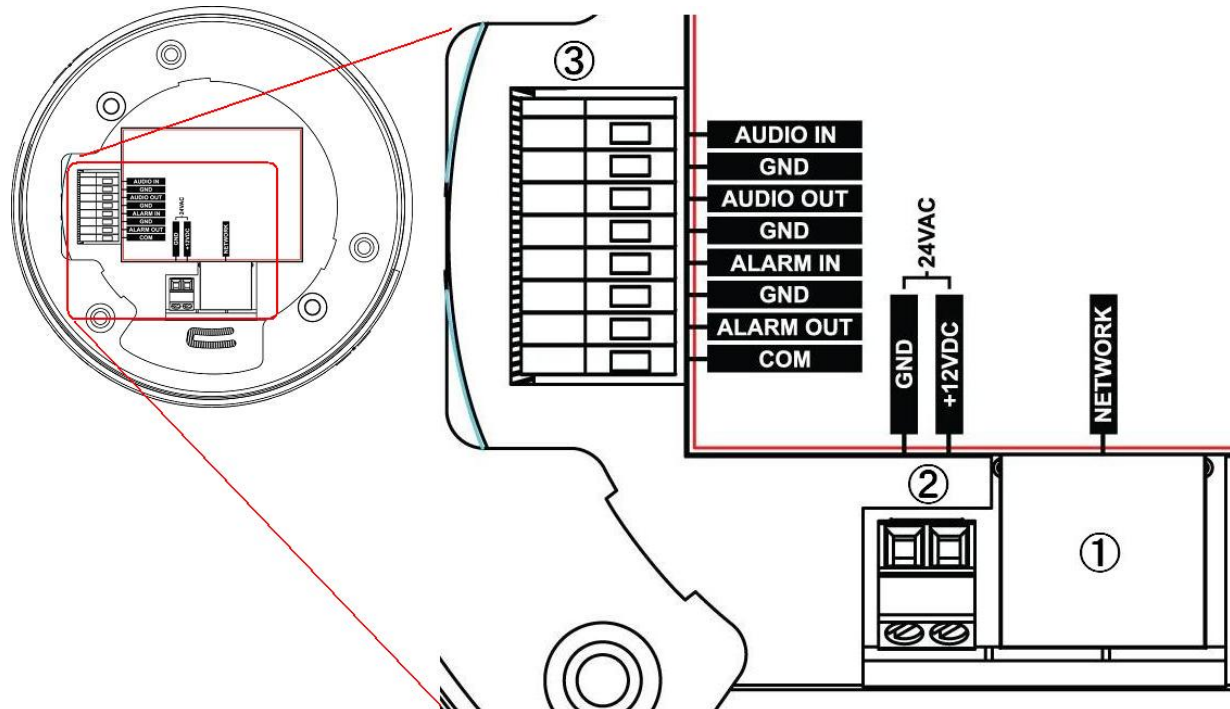
The **GANZ PixelPro** Series HD / Megapixel IP camera (ZN-Dxx) is a high performance H.264 network camera, designed for demanding security installations. It delivers crisp, clear images, disclosing every detail, thanks to its top quality progressive-scan CMOS sensor and advanced image processing. GANZ PixelPro features a mechanical IR cut filter, which enables color video in high and low light conditions, as well as IR sensitivity in 'night' mode.

Supported by the industry's largest base of video management software, the GANZ PixelPro provides the perfect solution for securing bank offices, airports and other facilities, and for traffic surveillance, over IP based networks.



The optimal Power over Ethernet (IEEE 802.3af) supports power to the camera to be delivered via the network, eliminating the need for a power outlet and reducing installation costs. Reliable AC power could be guaranteed by using an Uninterruptible Power Supply (UPS).

The GANZ PixelPro offers a comprehensive set of network security and management features. This includes support for port based network control (IEEE802.1X), which allows the camera to be connected to a network secured with this control and HTTPS encryption, which provides a secure channel between camera and application. It also enables authentication of the video source. GANZ video products are efficiently managed with the powerful GANZ DMS Client Software, which is provided on the Installation CD which comes with each GANZ PixelPro camera.



1. Network connector

The GANZ PixelPro connects to the network via a standard network cable, and automatically detects the speed of the local network segment (10BaseT/100BaseTX Ethernet). This socket could also be used to power the GANZ PixelPro via Power over Ethernet (PoE). The camera auto-senses the correct power level when using a PoE switch, router or injector.

2. Power Connector

12VDC or 24VAC power connector

3. I/O terminal Block

3.1 Audio in

Audio in (line level), for line-in mono signal (only left channel is used from a stereo signal)

3.2 Audio out

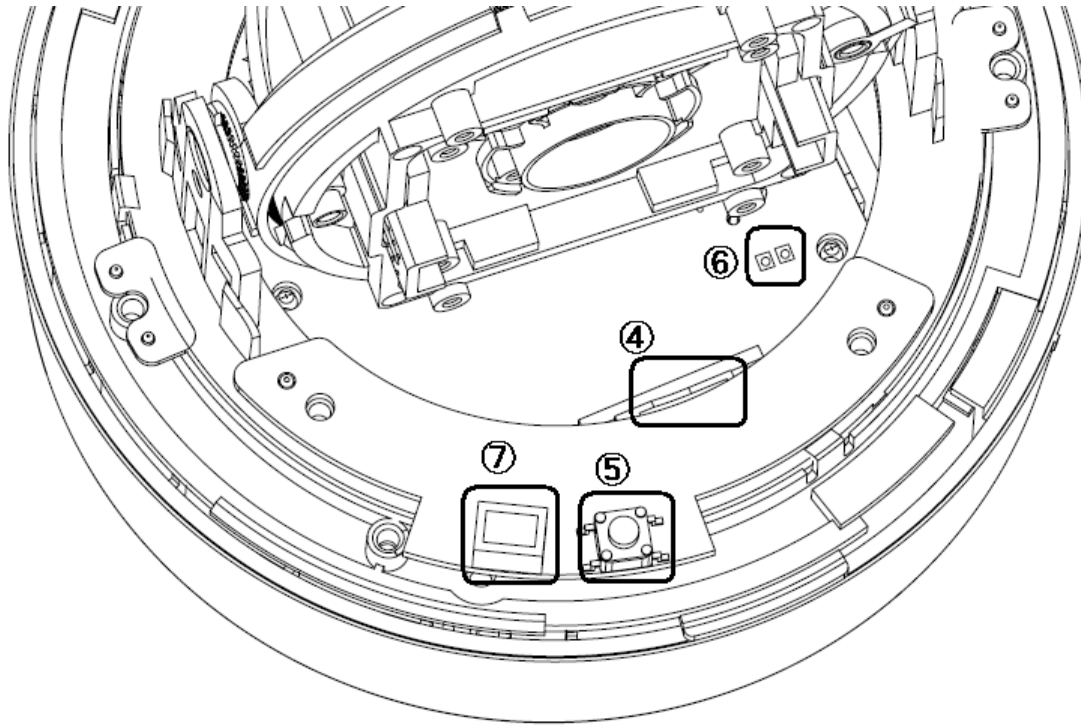
The Audio output (line level), which could be connected to a line output of a microphone system or an active speaker with a built-in amplifier.

3.3. Alarm in

One analog (dry contact) alarm input

3.4. Alarm out

One relay output (2A : AC120V / DC60V)



4. Micro SD card

Save snapshot images and video onto a Micro SD card.

5. Reset Button

Press this button to install the camera using the GANZ Dynamic Domain Name Service (DDNS), or to restore the camera configuration to its factory default settings.

6. Status LED

LED	Color	Indication	System Status
Status	Green (right)	On	Network connection is established.
		Flash	Camera is booting up.
	Red (Left)	Flash	Firmware Upload in progress. HW Factory default in progress

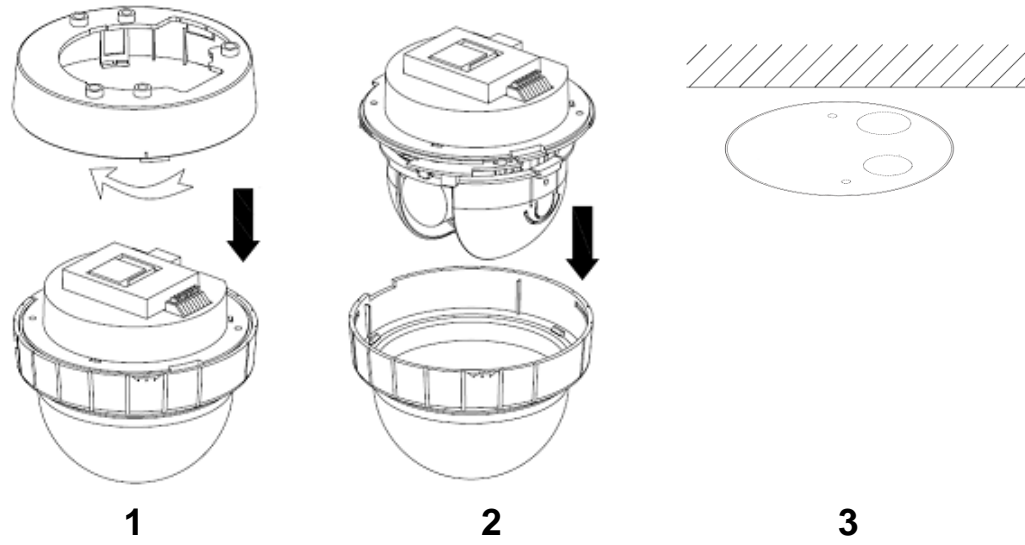
7. Video Output for Service monitor

This analog video output is available when installation mode is set to ON. Use accessory cable to video output.

2. Install camera

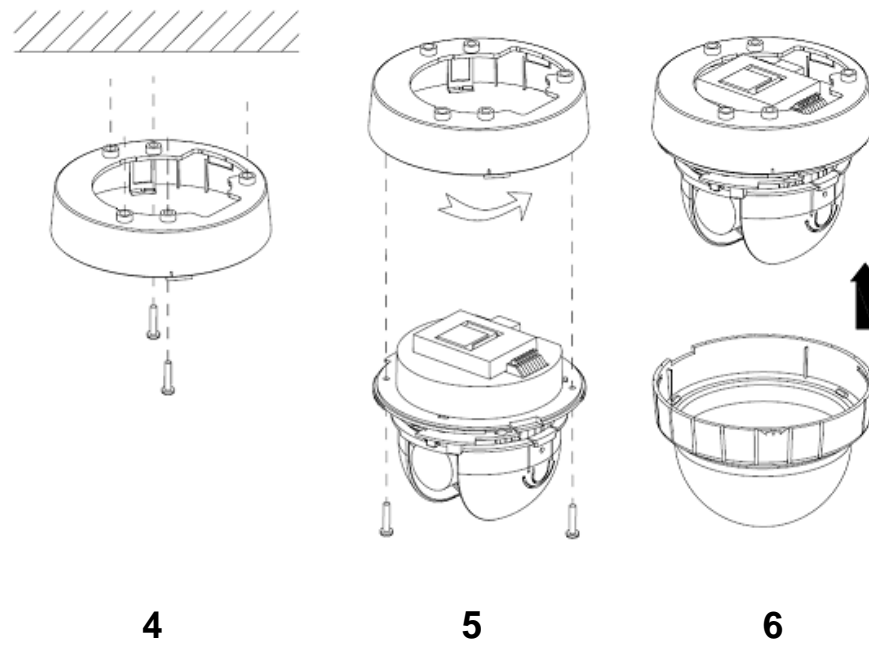
Installation Preparation

- 1) Turn the bottom cover clockwise and separate the unit and the cover.
- 2) Separate the top cover and the camera unit.
- 3) Make holes for cables to ceiling / wall with supplied template.



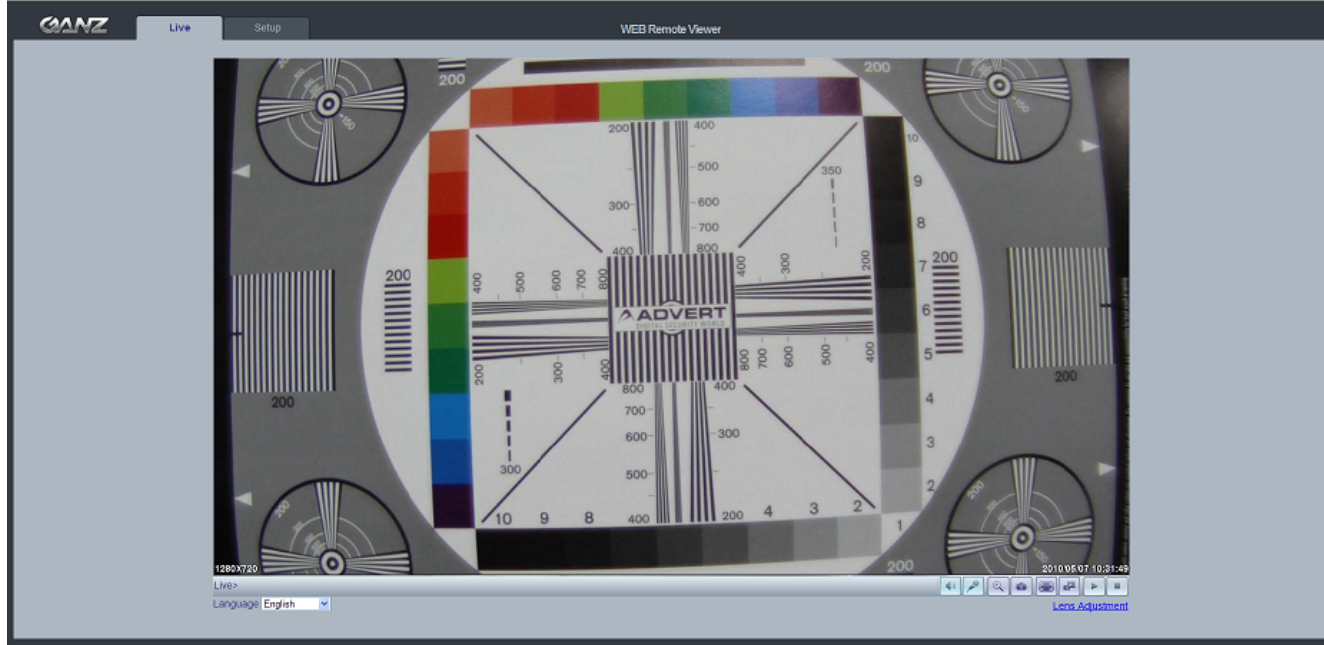
Mounting to a ceiling / wall

- 4) Secure the bottom cover to a ceiling / wall with two supplied tapping screws (4x30) and anchors .
- 5) Attach the unit to the bottom cover and turn it counter clockwise. Then secure the unit with two supplied tapping screws (3x8).
- 6) Attach the top cover to the unit.



3. Accessing the Camera

The GANZ PixelPro can be accessed with most standard operating systems and browsers. The recommended browser is Internet Explorer for Windows.



2.1 Access from a Web Browser

1. Launch a web browser (Internet Explorer or compatible equivalent)
2. Enter the IP address (or name server address) of the camera into the Address Bar.
3. Login dialog will appear when the camera is accessed for the first time.
4. The default username is **ADMIN** and the default password is **1234**.
5. The camera's Live View page is now displayed in your browser.

NOTE: The layout of the live view page in the camera may have been customized to meet specific requirements. Consequently, some of the examples and functions featured here may differ from those displayed on your own Live View page.

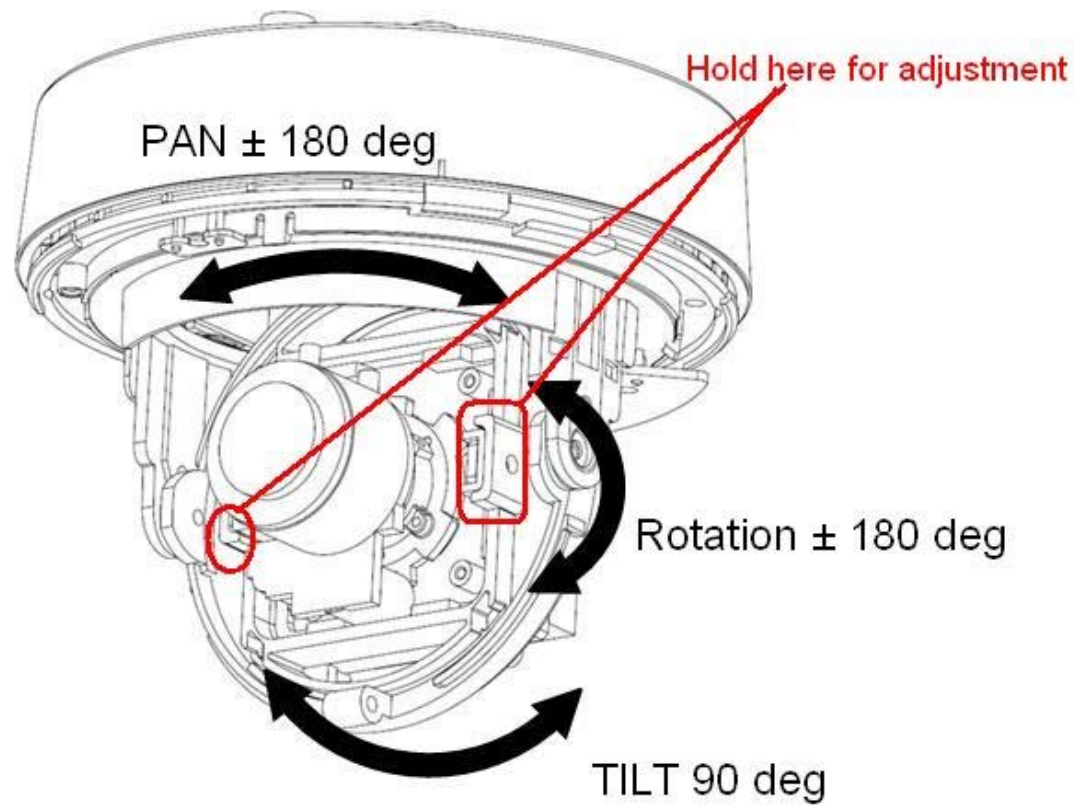
2.2 Accessing the Camera from the Internet

Once installed, the camera will be accessible on the Local Area Network (LAN). Then, you must configure the router/firewall to allow incoming data traffic to access the camera from the Internet. For security reasons this is usually done on a specific port, using **port forwarding**. Please refer to the documentation for router/firewall for further instructions on port forwarding.

2.3 Adjusting the Camera Direction

The camera body is set in a 3-axis gimbals mount, allowing movement in the pan, tilt and rotational planes. Adjust the direction of the lens so that it faces the subject.

Caution: DO NOT hold lens for adjustment



2.4 Adjusting the Image and Focus

To adjust the position of the lens:

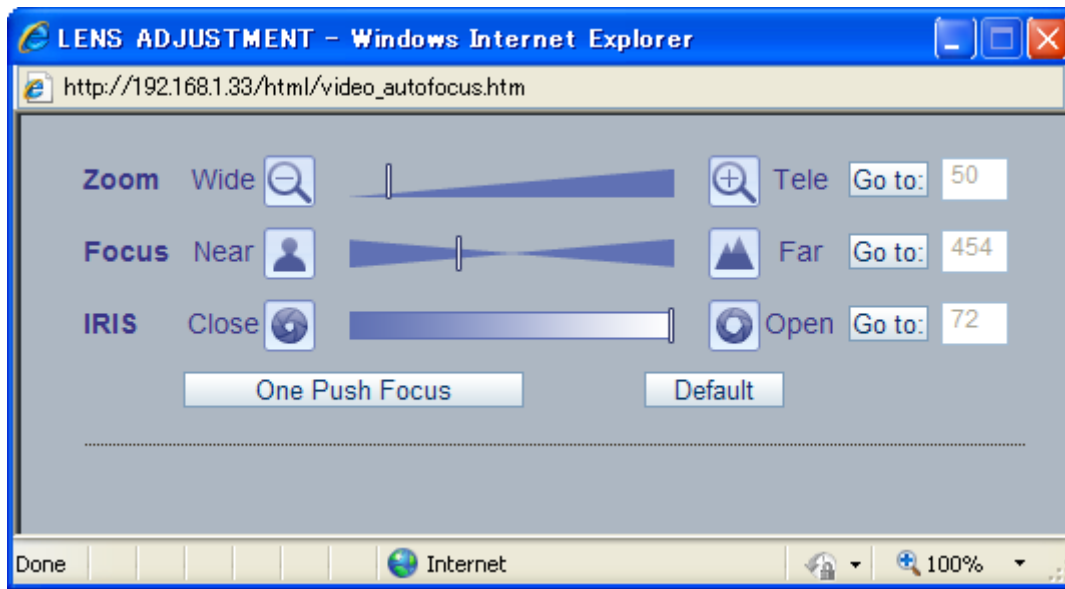
ZN-D1A (Normal Lens)

1. Open the **Live View** page in your web browser.
 - Select the **Setup** tab, and open the **Installation** page.
 - Set 'Installation Mode' to 'ON' and select the 'Video Format'
2. Connect supplied video monitor cable to video output connector, then connect it to analog monitor with coaxial cable.
 - Unscrew the zoom puller on the lens by turning it counter-clockwise.
 - Adjust the zoom setting and re-tighten the zoom puller.
 - Unscrew the focus puller on the lens to adjust the focus, and re-tighten the focus puller.
3. Check the image from the **Live View** page on your web browser.
 - Set 'Installation Mode' to 'OFF' to resume normal camera operation.

NOTE: DC Auto-Iris should always be disabled while focusing the camera. This will set the iris to the wide open position, which yields the smallest depth of field, and thus the best conditions for focusing the lens. When the focus has been set by using this method, it will maintain its focus in any kind of lighting conditions.









ZN-D1MAP, ZN-D2MAP (MFZP Lens)

1. Open the **Live View** page in your web browser.
 - Select the **Setup** tab, and open the **Video -> Camera** page.
 - Click 'Lens Adjustment'.
2. Set the desired Zoom position.
3. Click 'One Push Focus' button for adjust focus automatically or set focus manually.



NOTE: DC Auto-Iris should always be disabled while focusing the camera. This will set the iris to the wide open position, which yields the smallest depth of field, and thus the best conditions for focusing the lens. When the focus has been set by using this method, it will maintain its focus in any kind of lighting conditions.

2.5 Live View

-  **Client PC Speaker** (enable / disable)
-  **Client PC Microphone** (enable / disable)
-  **Digital Zoom**
-  **Snapshot**
-  **Full Screen**
-  **Video Stream Change** (1st Stream <> 2nd Stream)
-  **Play: Start Video Stream**
-  **Stop: Stop Streaming**

NOTE: It is possible that not all the buttons described below will be visible unless the Live View page has been customized to display them.

2.6 Video stream types

Motion JPEG

This format uses standard JPEG images in the video stream. These images are then displayed and updated at a rate sufficient to create a stream that shows constantly updated motion.

The Motion JPEG stream uses considerable amounts of bandwidth, but also provides excellent image quality and access to every individual image contained in the stream.

H.264 Protocols & Communication Methods

- **RTP (Real-time Transport Protocol)** is a protocol that allows programs to manage the real-time transmission of multimedia data, via unicast or multicast.
- **RTSP (Real-Time Streaming Protocol)** serves as a control protocol, to negotiate the type of transport protocol used for the stream. RTSP is used by a viewing client to start a unicast session
- **UDP (User Datagram Protocol)** is a communications protocol that offers limited service for exchanging data in a network which uses the Internet Protocol (IP). UDP is an alternative to the Transmission Control Protocol (TCP). The advantage of UDP is that it is not required to deliver all data and may drop network packets when there is network congestion. This is suitable for live video, as there is no point in re-transmitting old information that will not be displayed anyway.

H.264 Protocols & Communication Methods (*continued*)

Unicasting is communication between a single sender and a single receiver over a network. This means that the video stream is transmitted independently to each user, and each user receives their own video stream. A benefit of unicasting is in case one stream fails, it only affects one user.

Multicasting is bandwidth-conserving technology that reduces bandwidth usage by simultaneously delivering a single stream of information to multiple network recipients. This technology is used primarily on delimited networks (intranets), as each user needs an uninterrupted data flow and should not rely on network routers.

2.7 How to Stream H.264

Deciding on the combination of protocols and methods to use depends on your viewing requirements and on the properties of your network.

RTP+RTSP This method (actually RTP over UDP and RTSP over TCP) should be your first consideration for live video, especially when it is important to always have an up-to-date video stream, even if some images are lost due to network problems. This could be configured as multicast or unicast.

Multicasting provides the most efficient usage of bandwidth, especially when there are large numbers of clients viewing simultaneously. Note however, that a multicast broadcast could not pass a network router unless the router is configured to allow this. For example, it is not possible to multicast over the Internet.

Unicasting should be used for video-on-demand broadcasting, so that there is no video traffic on the network until a client connects and requests the stream. However, as more and more unicast clients get connected, the traffic on the network will increase and may cause congestion. Although there is a maximum of 10 unicast viewers, note that all multicast users combined count as 1 unicast viewer.

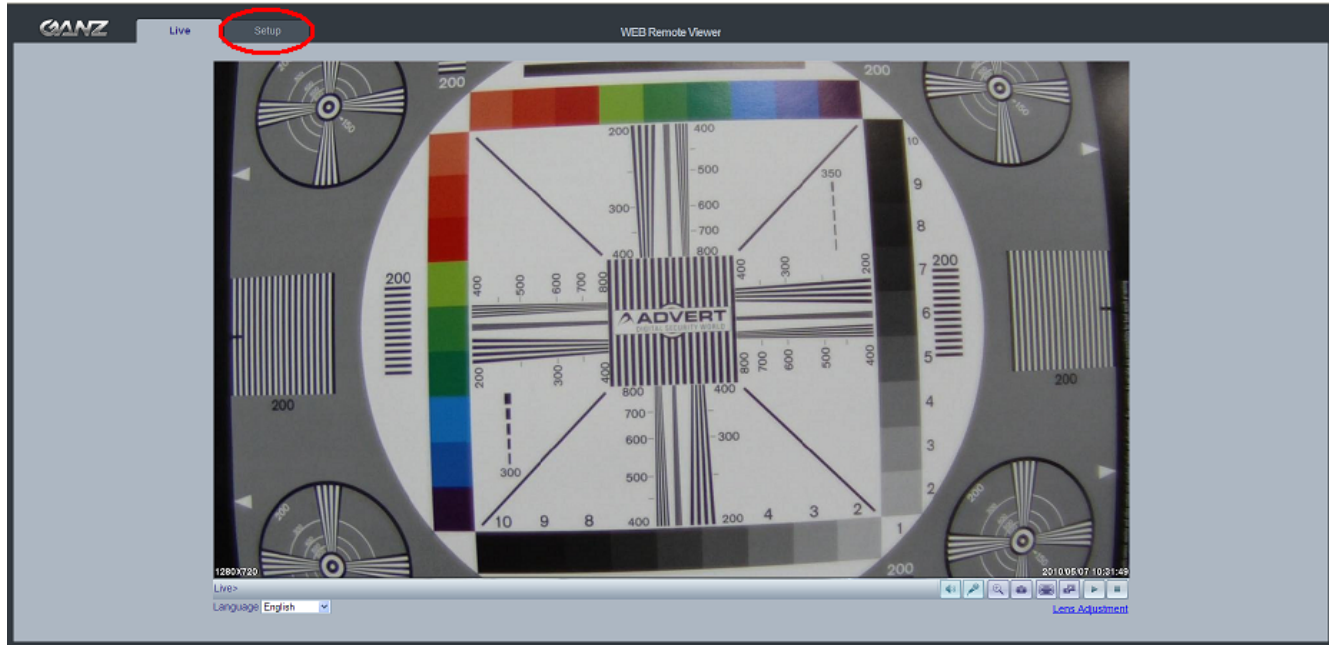
RTP/RTSP This unicast method is RTP tunneled over RTSP. This could be used to exploit the fact that it is relatively simple to configure firewalls to allow RTSP traffic.

RTP/RTSP/HTTP or **RTP/RTSP/HTTPS** These two methods could also be used to traverse firewalls. Firewalls are commonly configured to allow the HTTP protocol, allowing RTP to be tunneled.

3. Setup

The GANZ PixelPro is configured from the Setup tab, which is available on the upper-left hand side in the web interface. This configuration could be performed by:

- **Administrators**, who have unrestricted access to all settings under the Setup tab.
- **Users**, who have access to the Video & Image, Live View, and Event Configuration sections.



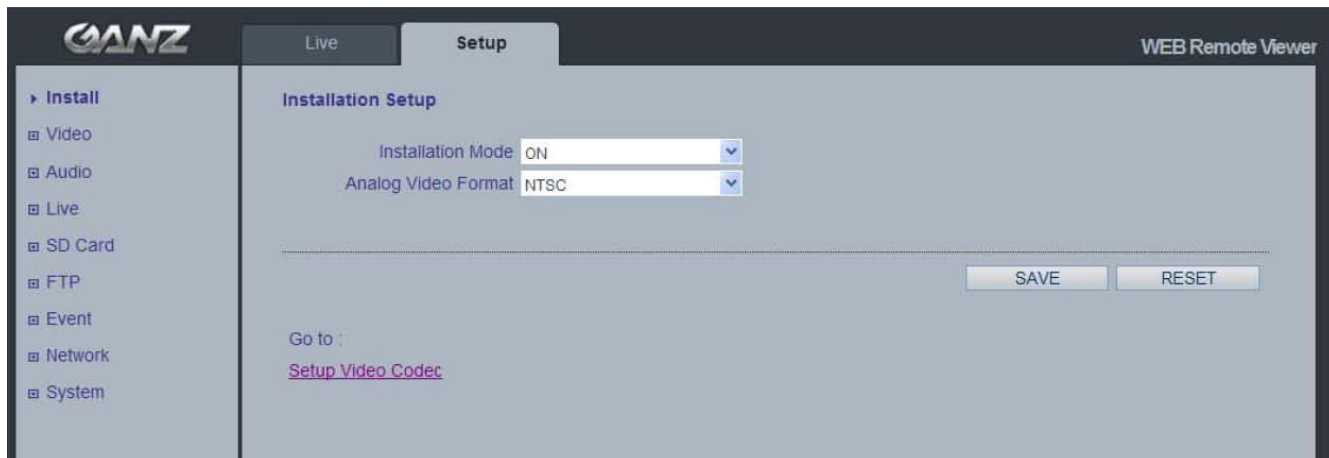
Accessing the Setup link from a browser:

1. Start your web browser and enter the IP address or name server address of the camera into the address bar.
2. The Live View page is now displayed. Click on the Setup tab.

4. Installation

The following descriptions show examples of some of the features available with GANZ PixelPro.

4.1 Installation Mode



Installation Mode allows use of the analog BNC output from the camera to connect the camera to a service monitor, in order to adjust the positioning of the camera and focus the lens.

ON : Analog Output is enabled; both IP video streams are set to VGA (640 x 480) resolution.
OFF : Analog Output will be disabled.

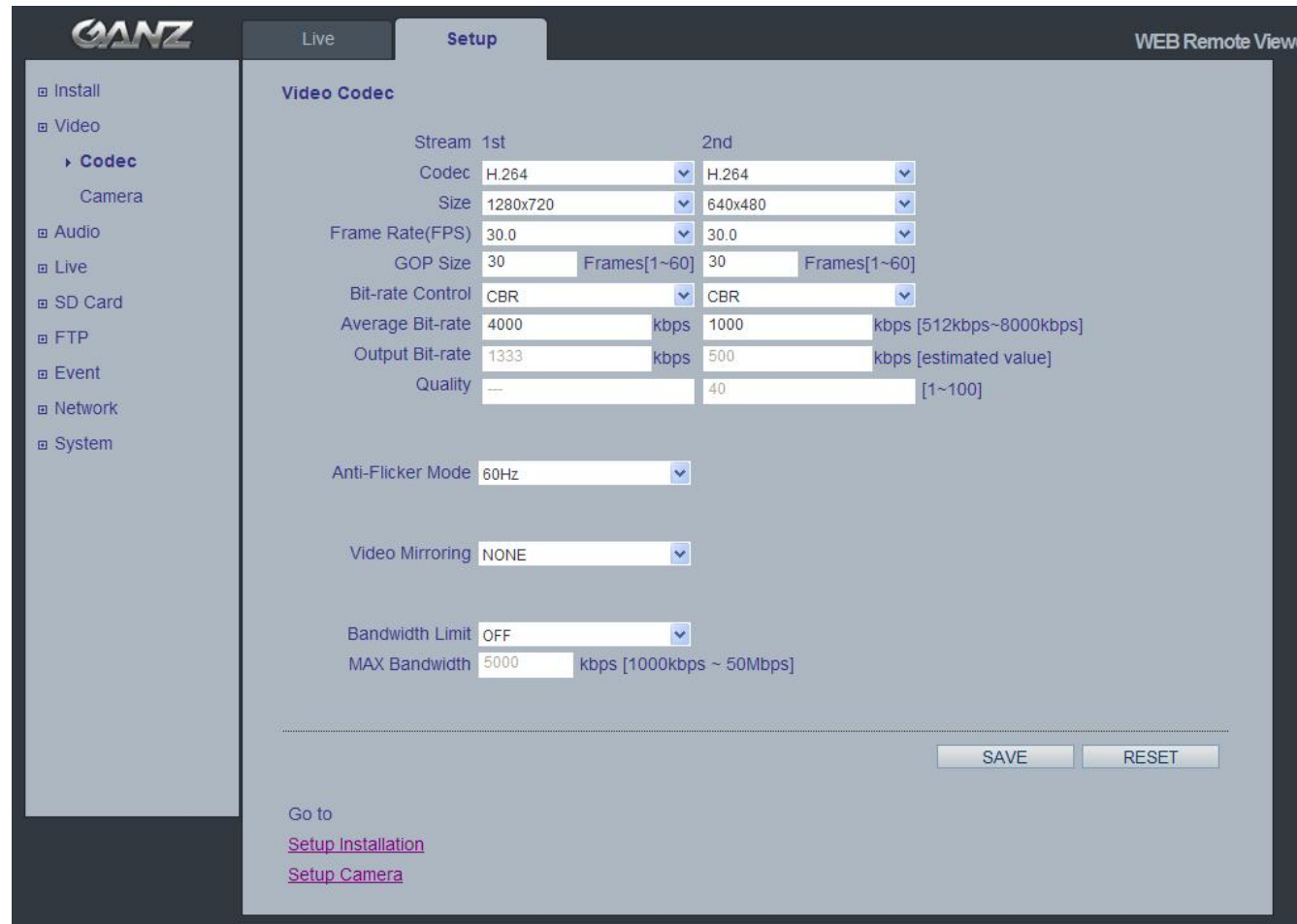
NOTE: *You must turn Installation Mode OFF to utilize the Megapixel features of the camera.*

5. Video Codec and Camera image

The following descriptions show examples of some of the features available with GANZ PixelPro.

5.1 Video Codec

This section allows you to choose the compression codec for each of the video streams.



Motion JPEG

This format uses standard JPEG still images in the video stream. These images then are displayed and updated at a rate sufficient to create a stream that shows constantly updated motion. The Motion JPEG stream uses considerable amounts of bandwidth, but also provides excellent image quality and access to every individual image contained in the stream. Multiple clients accessing Motion JPEG streams could use different image settings.

H.264

This is a video compression standard that makes good use of bandwidth and could provide high-quality video streams at less than 1 Mbit/s.

The H.264 standard provides the scope for a large range of different coding tools for use by various applications in different situations, and the GANZ PixelPro provides certain subsets of these tools. Using H.264, it is also possible to control the bit rate, which in turn allows the amount of bandwidth usage to be controlled. CBR (Constant Bit Rate) is used to achieve a specific bit rate by varying the quality of the H.264 stream. While using VBR (Variable Bit Rate), the quality of the video stream is kept as constant as possible, at the cost of a varying bit rate.

Size

Video output resolution. See next page for camera resolution tables.

Frame Rate

2.5 ~ 30fps in normal mode (1 ~ 30fps in slow shutter mode)

NOTE: *If the slow shutter mode is turned on and the low light condition is met, the image rate automatically goes down. In this case, the image is half of the normal mode.*

GOP Size

1 ~ 60 frames

Bitrate Control (CBR or VBR)

When using H.264 compression, if there is only limited bandwidth available, a constant bit rate (CBR) is recommended, although this may compromise image quality. Use a variable bit rate (VBR) for the best possible image quality.

Average Bitrate (512Kbps ~ 8Mbps)

Recommended bit rate for VGA (640x480): 800Kbps ~ 1Mbps

Recommended bit rate for 720p (1280x720): 3Mbps ~ 4Mbps

Recommended bit rate for 1080p (1920x1080): 6Mbps ~ 8Mbps

Quality

1 ~ 100 This parameter will be available in MJPEG mode.

Anti-Flicker Mode

60Hz: NTSC

50Hz: PAL or "flicker-free" mode (to use the camera in locations lit by fluorescent lighting).

Video Mirroring

Select Video Mirroring mode NONE/ HORIZONTAL / VERTICAL / FLIP(H+V)

Bandwidth Limit

Limit the bandwidth that the GANZ PixelPro can use during a network connection.

Max Bandwidth

Specify the maximum bandwidth that the GANZ PixelPro can use during a network connection.

< Output resolution table for 1080p (Full HD) model >

First Stream	Second Stream		
1080p (1920 x 1080)	-	-	-
1.3MP (1280 x 1024)	-	-	-
720p (1280 x 720)	720p (1280 x 720) **	VGA (640 x 480)	QVGA (320 x 240)
720p Wide Mode (1280 x 720)	720p Wide Mode ** (1280 x 720)	VGA (640 x 480)	QVGA (320 x 240)
XGA (1024 x 768)	-	-	-
4CIF (704 x 480/576)	-	4CIF (704 x 480/576)	CIF (352 x 240/288)
VGA (640 x 480)	-	VGA (640 x 480)	QVGA (320 x 240)
CIF (352 x 240/288)	-	CIF (352 x 240/288)	-
QVGA (320 x 240)	-	QVGA (320 x 240)	-

** Only available MJPEG mode. Frame rate will be limited 15fps on both 1st and 2nd stream.

< Output resolution table for 720p (HD) model >

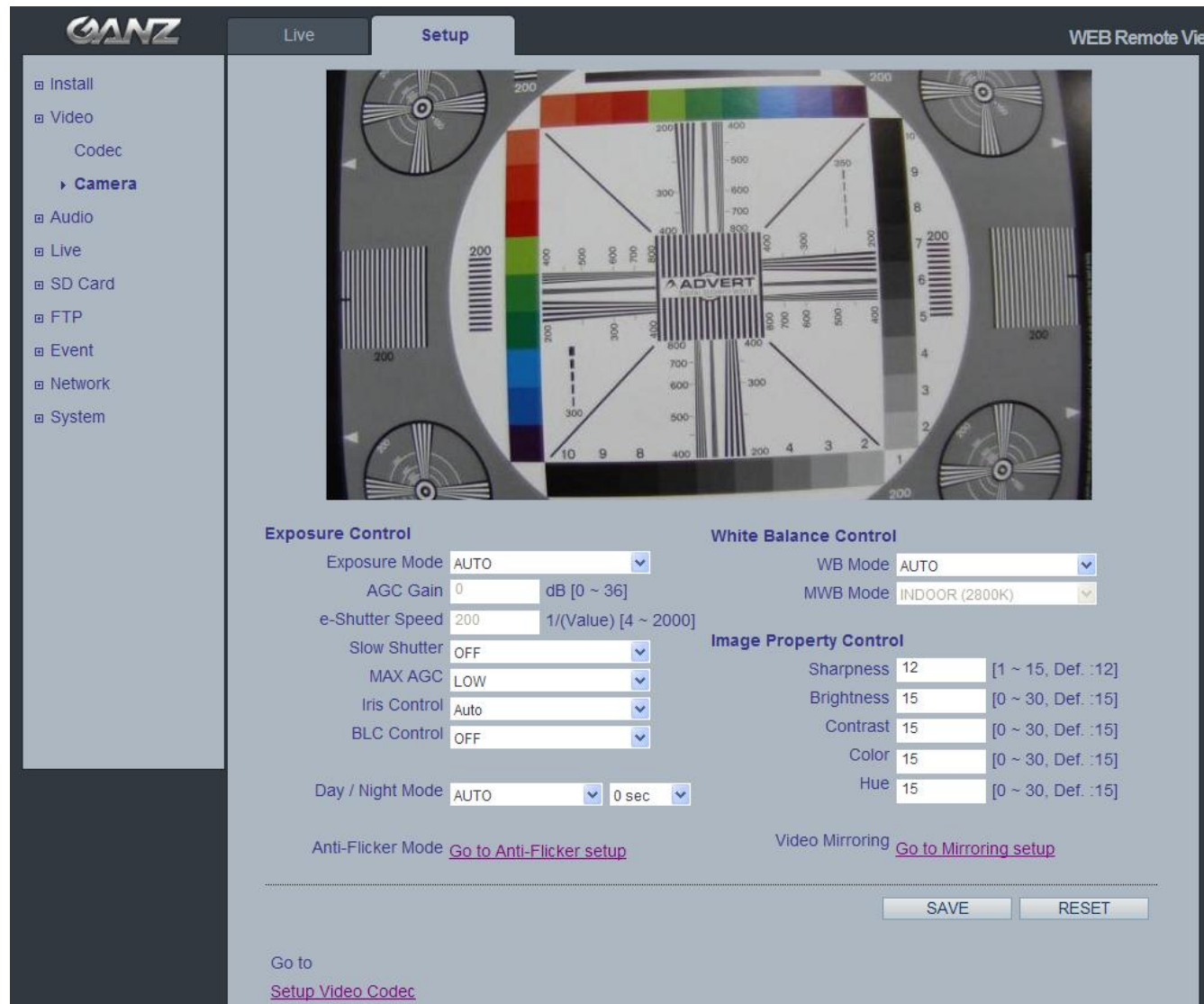
First Stream	Second Stream	
1.3MP (1280 x 1024)	-	-
720p (1280 x 720)	-	-
720p Wide Mode (1280 x 720)	VGA (640 x 480)	QVGA (320 x 240)
XGA (1024 x 768)	-	-
4CIF (704 x 480/576)	4CIF (704 x 480/576)	CIF (352 x 240/288)
VGA (640 x 480)	VGA (640 x 480)	QVGA (320 x 240)
CIF (352 x 240/288)	CIF (352 x 240/288)	-
QVGA (320 x 240)	QVGA (320 x 240)	-

< Output resolution table for VGA model >

First Stream	Second Stream	
4CIF (704 x 480/576)	4CIF (704 x 480/576)	CIF (352 x 240/288)
VGA (640 x 480)	VGA (640 x 480)	QVGA (320 x 240)
CIF (352 x 240/288)	CIF (352 x 240/288)	-
QVGA (320 x 240)	QVGA (320 x 240)	-

5.2 Camera

This section allows you to adjust various camera settings.



5.2.1 Exposure Control

Exposure Mode

AUTO : Use this setting for automatic exposure control.

MANUAL: Use these settings to control camera exposure manually.

To compensate for poor lighting conditions, you can adjust the Color level, Brightness, Sharpness, Contrast, Exposure control, and Iris.

NOTE: When AE is enabled, some of the submenus (AGC Gain, e-Shutter Speed) will be disabled.

Slow Shutter Mode

For low light conditions, turn on slow shutter mode.

Max AGC Gain

For low light conditions, adjust to a higher value, such as 30dB.

Iris Control

Auto : Iris adjusts automatically based on lighting condition..

Manual : Set Iris position manually (through software adjustment only)

Best Quality : Set Iris position to maximize resolution

Depth of field : Set Iris position to maximize depth of field

BLC Control (Back Light Compensation)

The BLC adjusts the exposure of scenes with strong backlight in the center-bottom of the image.

When the image background is too bright, or the subject too dark, backlight compensation makes the subject appear clearer. The settings for low light behavior determine how the camera behaves at low light levels. These settings affect video image quality and how much noise is in the images.

5.2.2 Day & Night Control

Day & Night Mode

Auto / On / Off

Set this filter to OFF to allow the camera to 'see' infrared light, removing the IR cut filter, when using an IR illuminator. This will make the image clearer. If set to Auto, the camera will automatically switch between IR cut filter On and Off, according to the current lighting conditions.

5.2.3 White Balance Control

WB Mode

ON: ATW (Automatic White Balance)

OFF: MWB (Manual White Balance)

The White balance adjustment setting is used to make the colors in the image appear consistent, compensating for the different colors present in different light sources.

The GANZ PixelPro camera can be set to automatically identify the light source and compensate for its color temperature. If necessary, the type of light source could be set manually.

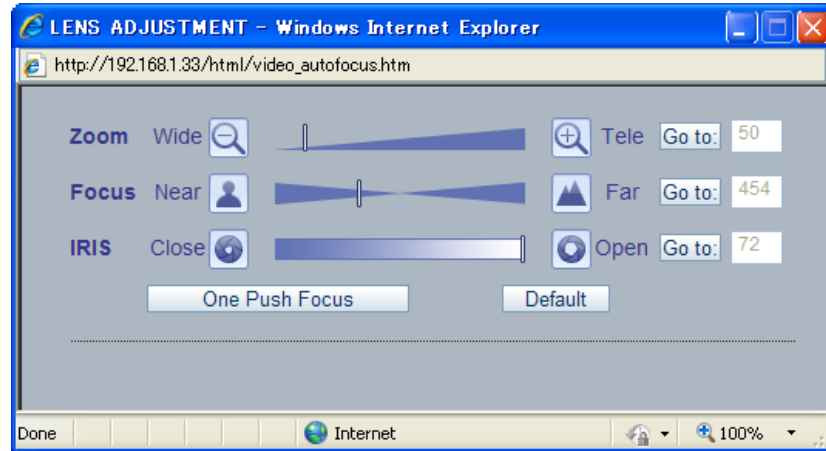
5.2.4 Image Property Control

Modify the video signal parameters, such as: Brightness, Sharpness, Contrast, Color, and Hue.

Sharpness (1 ~ 15; Default: 12)
Brightness (0 ~ 30; Default: 15)
Contrast (0 ~ 30; Default: 15)
Color (0 ~ 30; Default: 15)
Hue (0 ~ 30; Default: 15)

5.2.5 Lens Adjustment (ZN-D1MA, ZN-D2MA Only)

Adjust the lens (Zoom, Focus & Iris) from this window.
One Push Focus : Camera will automatically adjust the focus.
Default : Back to original factory default position.



6. Audio

The GANZ PixelPro can transmit audio to other clients, and can also play audio received from other clients. This section describes the basic audio settings, such as setting the communication codec, and adjusting the sound levels for the microphone and speakers connected to the camera.



Enable Audio

ON / OFF: Check this to enable audio in the GANZ PixelPro.

Codec

G.711 u-law

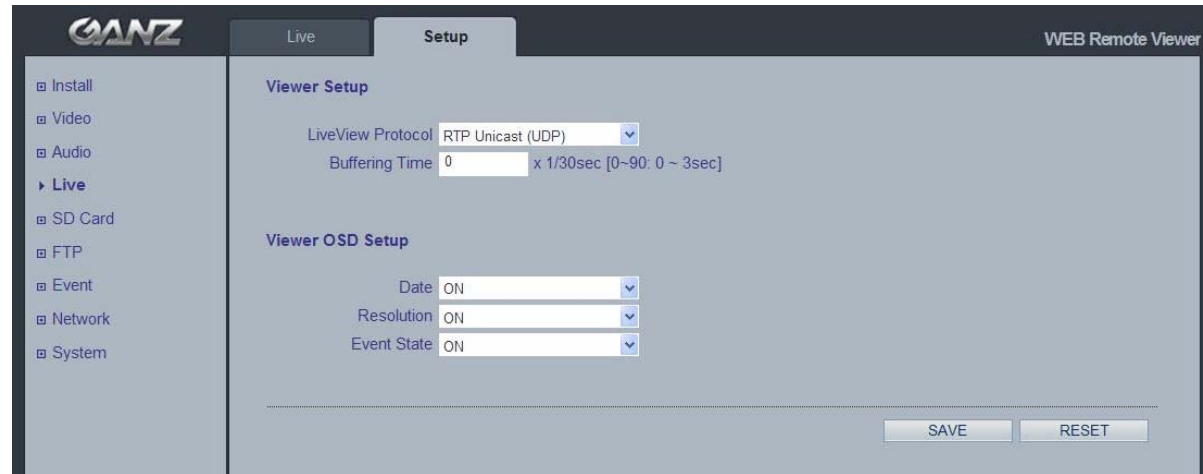
Audio Input

Audio from a connected line-in source can be connected to the Audio in connector on the GANZ PixelPro camera. If there are problems with the sound input being too low or high, you can adjust the **input gain** for the microphone connected to the GANZ PixelPro.

7. Live

GANZ PixelPro can support up to 10 simultaneous users via unicast.

With multicasting, GANZ PixelPro can support an unlimited number of users. If supported on the network, consider using the multicast function, as the bandwidth consumption will be much lower.



Viewer Setup

Live View Protocol

RTP Unicast (UDP) / RTP Multicast (UDP) / RTP over RTSP (TCP)

Buffering Time (frame based)

Determines (0 ~ 90) x 1/30 sec (0 ~ 3sec)

Viewer OSD Setup

Date: Determines whether the date is displayed.

Resolution: Determines whether the camera resolution is displayed.

Event State: Determines whether the event state is shown on display window.

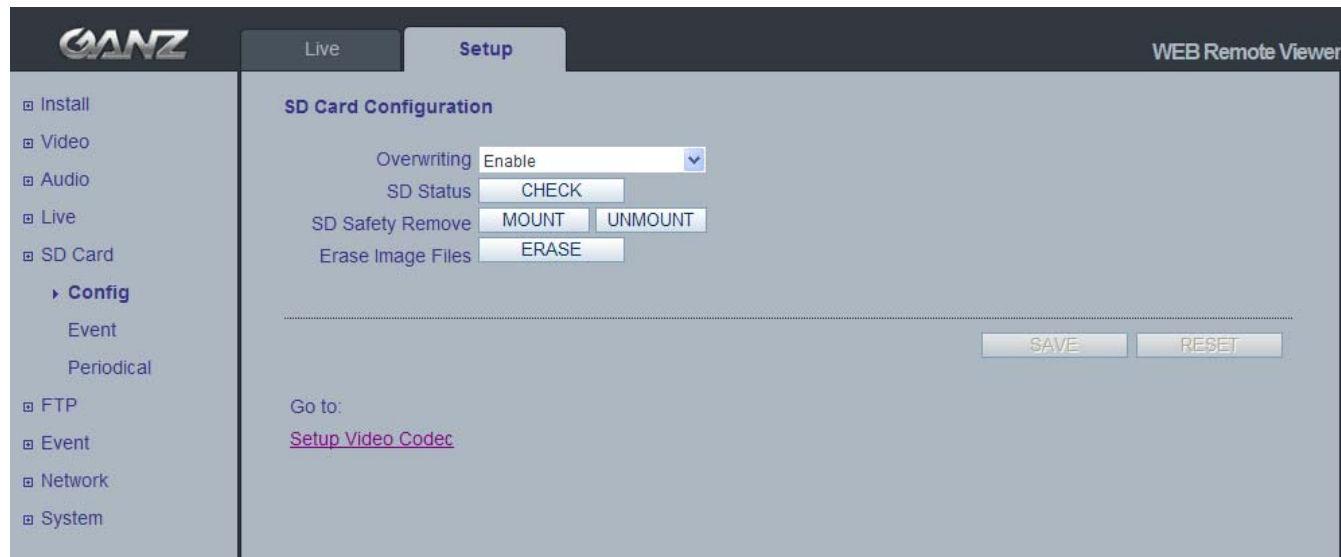
Event State: (as shown in Live View)

AI : Alarm In

AO : Alarm Out

M : Motion

8. SD Card



8.1 Configuration

SD Card Configuration

This configuration page allows you to save video and still images to the Micro SD (SDHC) card.

NOTE: *This function cannot be used when Installation mode is turned ON. Set the first stream to 1280x720 or 1280x720(wide) in the Video > Codec section, and second stream to MJPEG or 'None'.*

Overwriting

The system will overwrite the oldest data on the SD card to continually record the newest data.

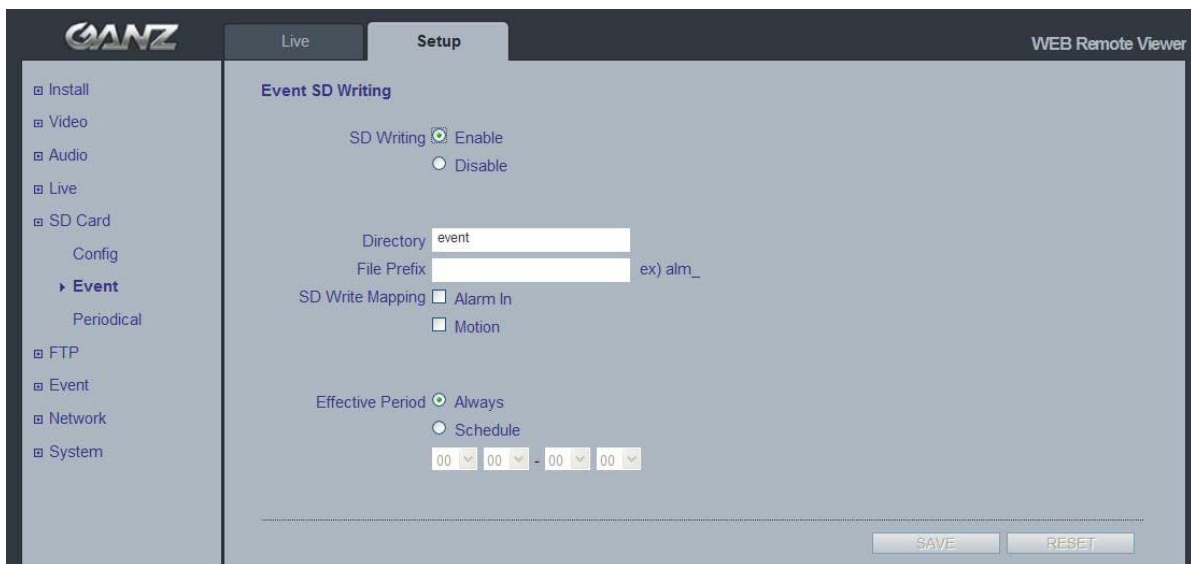
SD Status

Shows present SD card status. It also shows whether the SD card is present and the capacity left on it in kilobytes (KB).

Mount / Unmount The Mount button notifies the system after the SD card is inserted. The **Unmount** button is to notify the system before the SD card is removed. This is a similar function to the 'remove the hardware safely before taking out the USB' in the Windows OS.

NOTE: *The user can download the images from the SD card using the FTP function. Turn FTP server on and connect to the camera. See Chapter 9.1 for details.*

8.2 Event



Event SD Writing

You can configure the camera to store still images based on events such as Alarm In and Motion detection.

NOTE: *This function cannot be used when Installation mode is turned ON. Set the first stream to 1280x720 or 1280x720(wide) in the Video > Codec section, and second stream to MJPEG or 'None'.*

SD Writing

SD Writing will Enable / Disable event recording to the SD card.
When Disabled, all remaining menus will be deactivated.

Directory

The name of the sub-directory where the still images will be stored when an Event occurs.

File Prefix

You may add a file name prefix to the stored image file name.

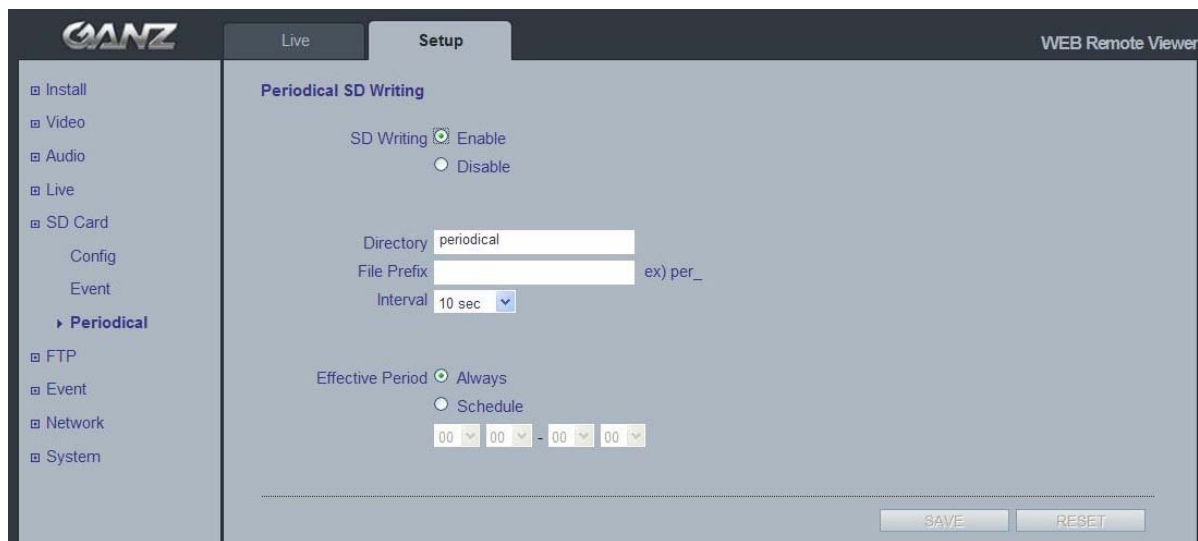
Example: *If the file prefix is 'alm', the still image would be saved as alm_date_time.jpg.*

SD Write Mapping

Choose which types of events will be recorded to the SD card by checking the desired event.

Effective Period lets you decide whether to save all the events that are happening at all hours of the day, or only the events that occur within during specific times of the day. The Schedule method is used to save events on the SD card during a specific time range. The start time and the end time can be set using the dropdown list.

8.3 Periodical



Periodical SD Writing

It is setting page to save the still shot in the Micro SD card periodically.

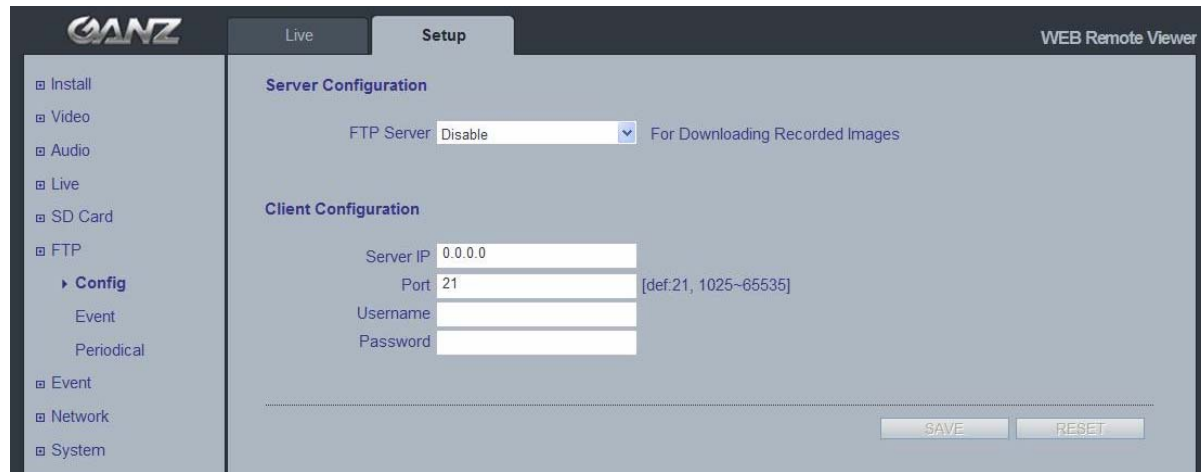
NOTE: This function cannot be used when Installation mode is turned ON. Set the first stream to 1280x720 or 1280x720(wide) in the Video > Codec section, and second stream to MJPEG or 'None'.

The **Directory** and **File Prefix** fields are same as on the SD Card > Event page.

Interval allows for saving still images based on frequency (1 image every 10 sec, for example). Use the drop-down control to set from 10 seconds to 1 hour.

Effective Period is also configured the same as on the SD card > Event page. Periodically, it saves the still image during a specific time range only.

9. FTP



9.1 Configuration

Server Configuration

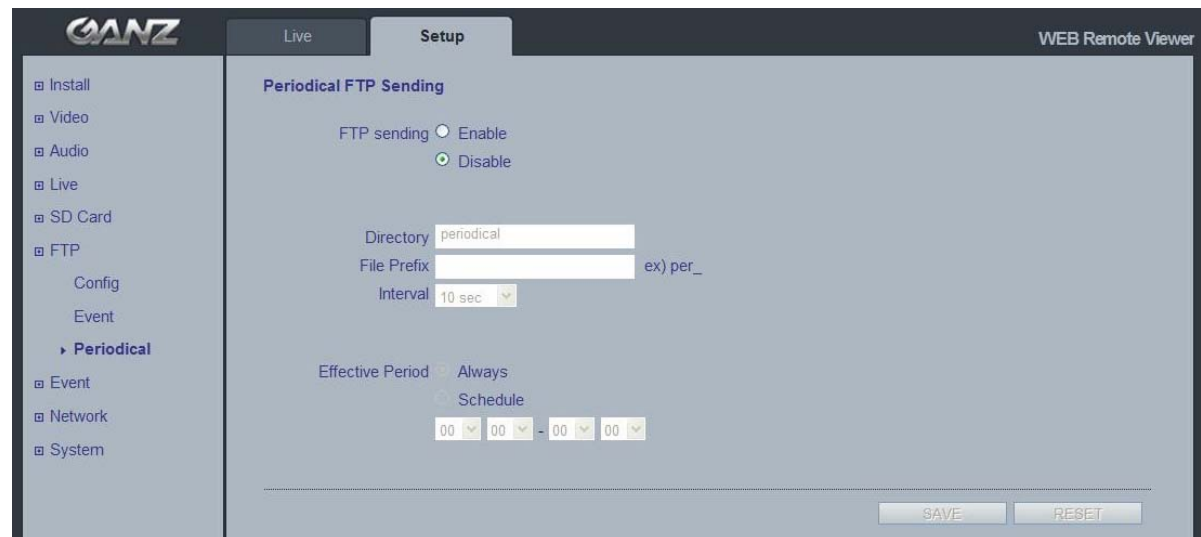
Enable / Disable the FTP function to download saved content from the **SD Card** remotely.
When it is Enabled, the FTP client can download the saved content without removing the SD Card.

Client Configuration

Allows transmission of still images to remote sites, using the FTP server. Set the information for FTP transmission by inserting the IP address, Username and Password of the remote FTP Server.

NOTE: This function cannot be used when Installation mode is turned ON. Set the first stream to 1280x720 or 1280x720(wide) in the Video > Codec section, and second stream to MJPEG or 'None'.

9.2 Event

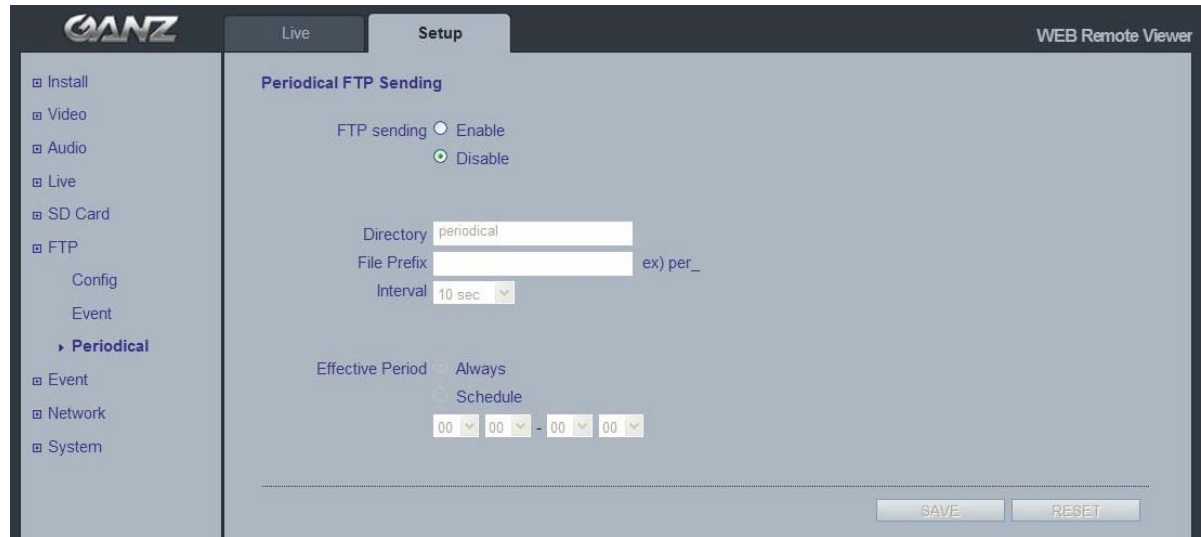


Event FTP Sending

Allows transmission of still images to the FTP server at remote sites when an event occurs.

NOTE: *This function cannot be used when Installation mode is turned ON. Set the first stream to 1280x720 or 1280x720(wide) in the Video > Codec section, and second stream to MJPEG or 'None'.*

The menu structure is similar to the SD Card >Event menu, but instead of saving the still image to the SD card on an event, it transmits to the FTP server configured in the FTP > Config menu.



9.3 Periodical

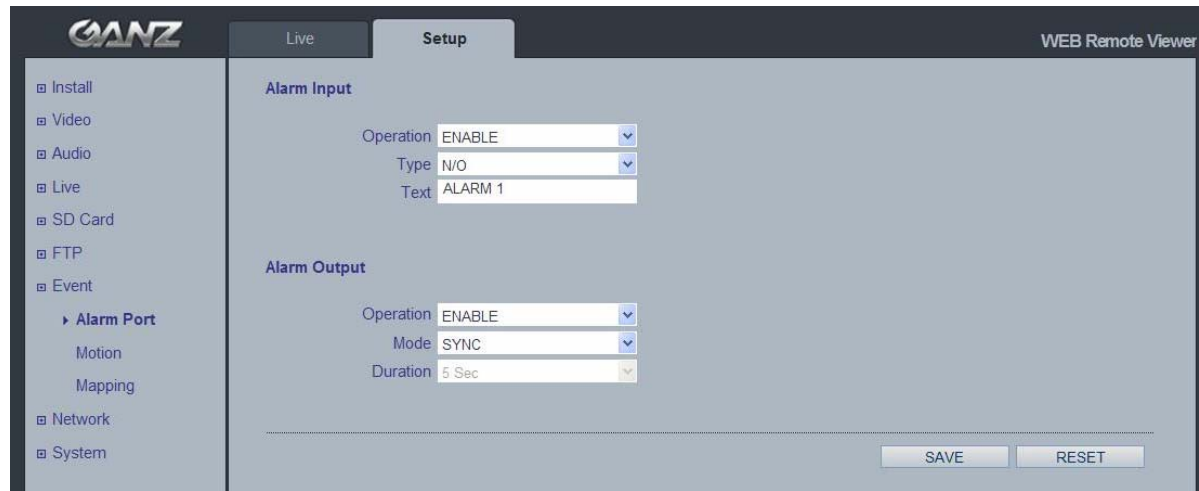
Periodical FTP Sending

Allows transmission of still images periodically to the FTP server of remote sites.

NOTE: *This function cannot be used when Installation mode is turned ON. Set the first stream to 1280x720 or 1280x720(wide) in the Video > Codec section, and second stream to MJPEG or 'None'.*

The menu configuration is similar to the SD Card >Periodical menu, but instead of saving the still images to the SD card on an event, it transmits to the server configured in the FTP > Config menu.

10. Event



10.1 Alarm Port

Alarm Input (dry contact)

Used for connecting external alarm contacts and triggering specific alarm-based events. The input is typically connected to a motion detector or any other external security device, so that recording can be triggered and/or still images could be recorded and/or uploaded whenever the sensor is activated.

Alarm Output (relay output)

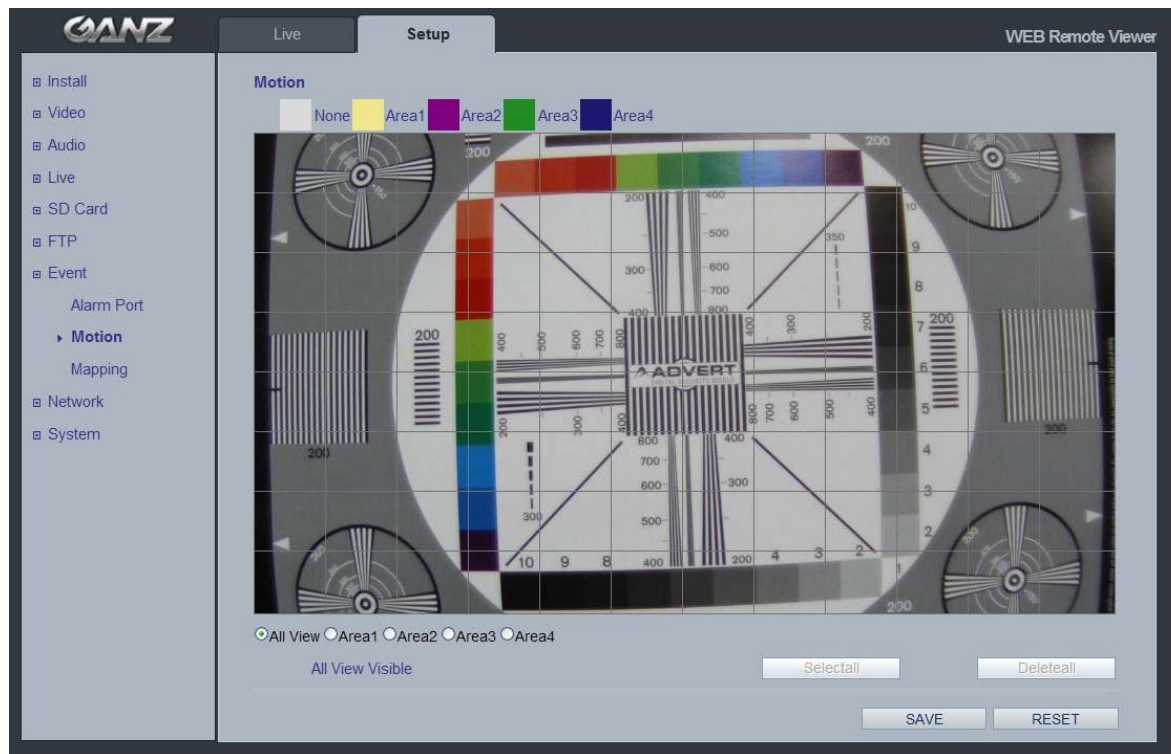
This could drive a **maximum load of 60VDC or 120VAC at 2A** directly. If the output is used with an external relay, a diode must be connected in parallel with the load for protection against any voltage transients.

Duration

This parameter sets the minimum period before the alarm reset. Another alarm will not be triggered until this period has lapsed, even if the tampering conditions are otherwise met. This could help to prevent false alarms for known conditions that affect the image.

Caution! Connecting AC to the inputs will damage the unit!

10.2 Motion



Motion Detection

Motion detection is used to generate an alarm whenever movement occurs within the video image.

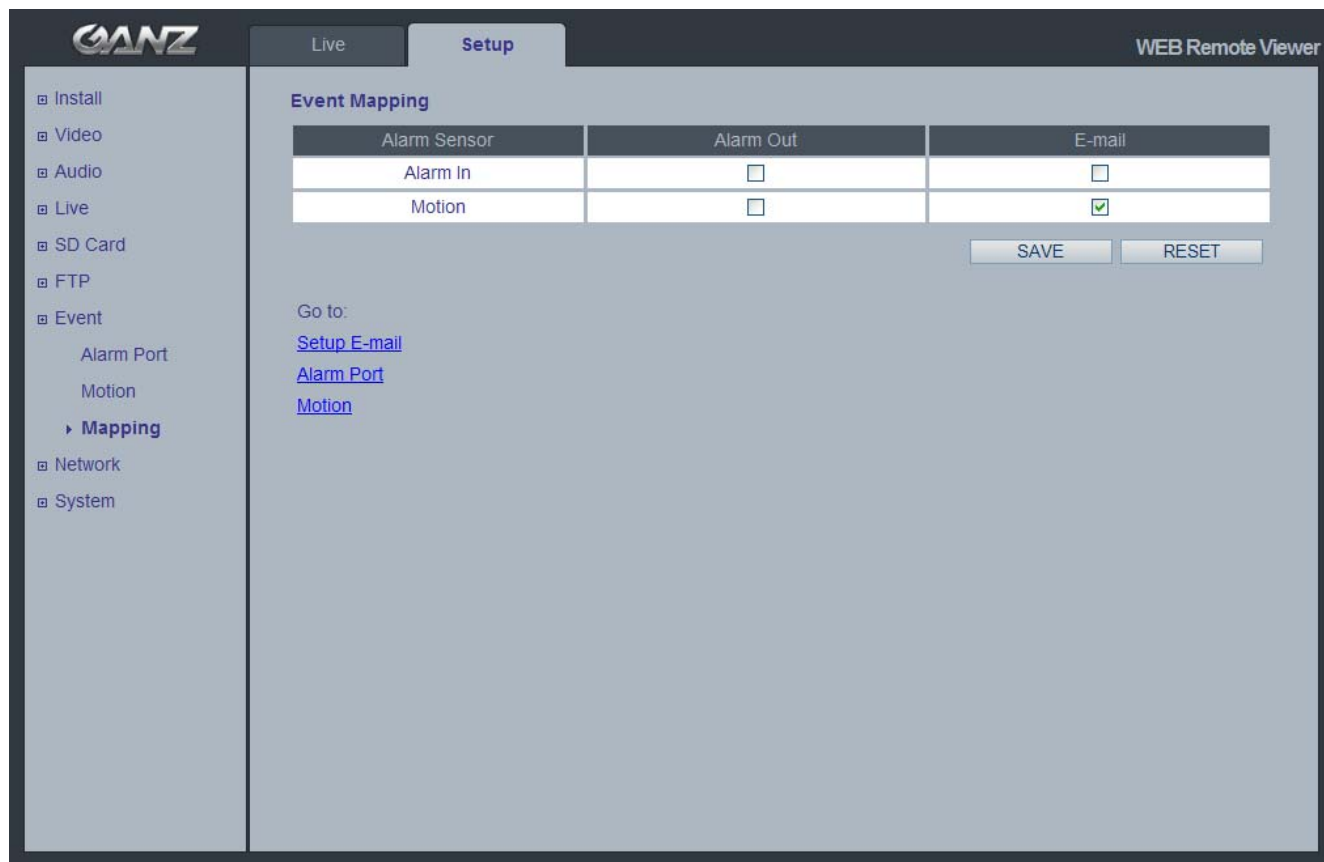
A total of 4 motion detection zones can be configured.

Configuring Motion Detection

1. Click **Motion Detection** in the **Event Config** menu.
2. Select an area for motion detection from Area 1 to Area 4.
3. Select boxes of the motion detection zone you are creating.
4. Adjust sensitivity level.
5. Click **Save**.

NOTE: *Using the motion detection feature will consume more of the camera's resources, and this could decrease the camera's overall performance, depending on your settings.*

10.3 Mapping



Event Mapping

It is possible to define conditions that would cause the camera to respond with certain actions.

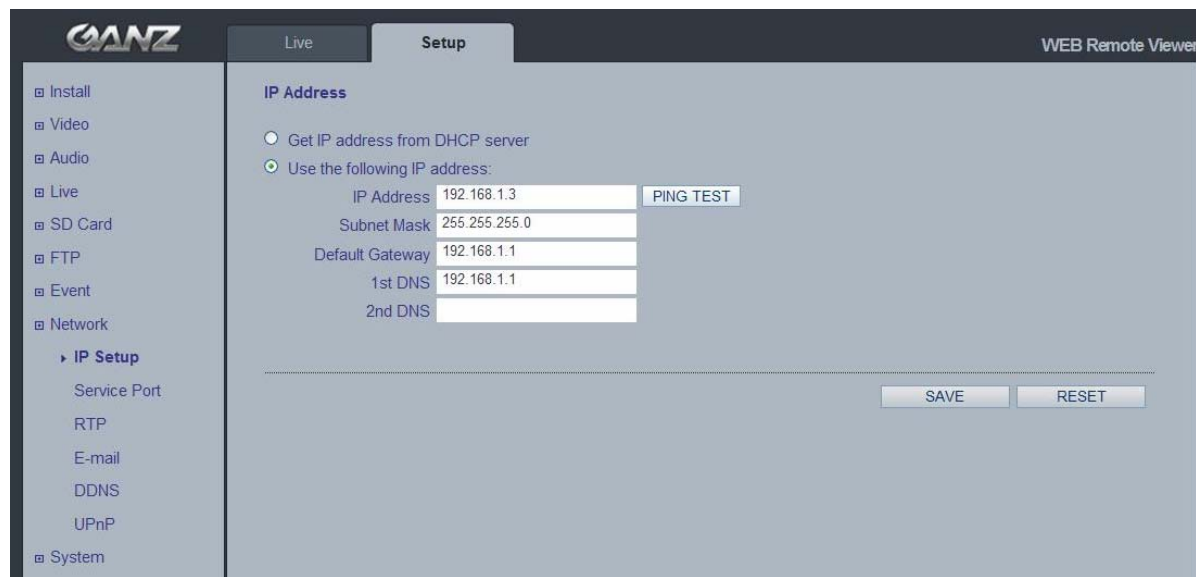
A triggered event happens as a result of an event which is mapped within this menu.

This could be caused by motion detection or an external alarm input.

Alarm Out events could be triggered by either **Motion** or **Alarm In**.

E-mail notification could be sent by either **Motion** or **Alarm In**.

11. Network



11.1 IP Setup

IP Address Configuration

The GANZ PixelPro supports both IP version 4 and IP version 6 (IPv6 will be supported as of v3.0). Both versions may be enabled simultaneously, and at least one version should be always enabled.

When using IPv4, the IP address could be set automatically via DHCP, or a static IP address could be set manually. If IPv6 is enabled, your camera receives an IP address according to the configuration within the network router.

There are also options for setting up notification of changes in the IP address, and for using a Dynamic Domain Name Service (DDNS).

NOTE: *IP address assignment via DHCP may lead to the situation where the IP address changes and you lose contact with the camera. If your DHCP server can update a DNS server, you can access the GANZ PixelPro by a static host name, regardless of having a dynamic IP address. Configure the options for notification of IP address change (under Services) to receive notification from the camera when the IP address changes.*

DNS Configuration

DNS (Domain Name Server) provides the translation of host names to IP addresses on your network.

Primary DNS server

Enter the IP address of the Primary DNS server for your network.

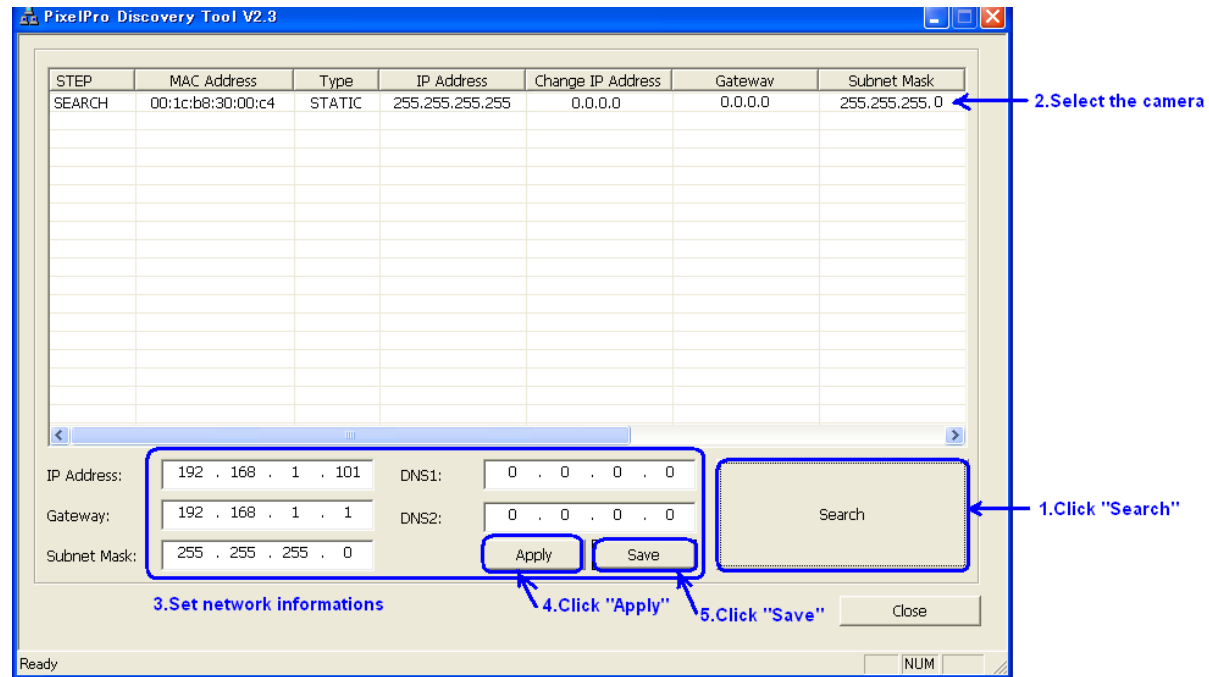
Secondary DNS server

Enter the IP of the Secondary DNS, which is used if the Primary DNS server is unavailable.

How to Assign an IP Address

Default setting is set to "DHCP" and "UPnP" function is set to ON. If your network has a DHCP server and the UPnP function is enabled on your PC, you can find the camera in "My Network".

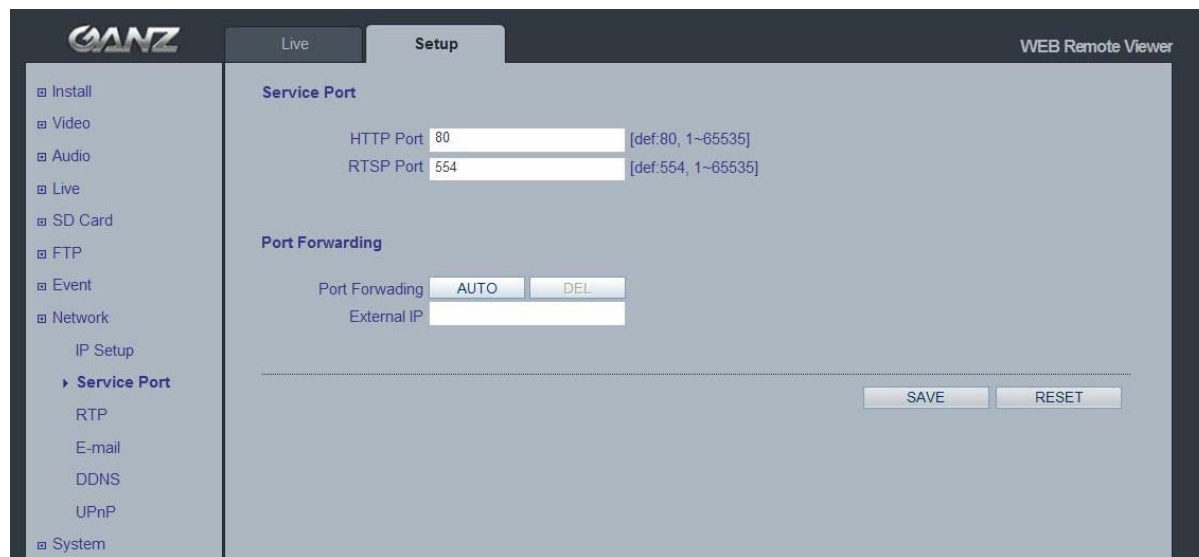
- 1) Execute the PixelPro Discovery Tool (from the Installation CD), and click "Search" button.
- 2) After the list of detected devices appears, select the camera you are trying to configure.



- 3) Enter all of the network information for your camera.
- 4) Click the "Apply" button.
- 5) Click the "Save" Button to save the new network information to the camera.

When you double-click the camera within the list, the default web browser (Internet Explorer, or compatible equivalent) will open and automatically connect to the camera.

11.2 Service Port



Service Port

HTTP port

The default HTTP port number (**80**) could be changed to any port within the valid port range (1-65535). This is useful for simple port mapping.

RTSP port

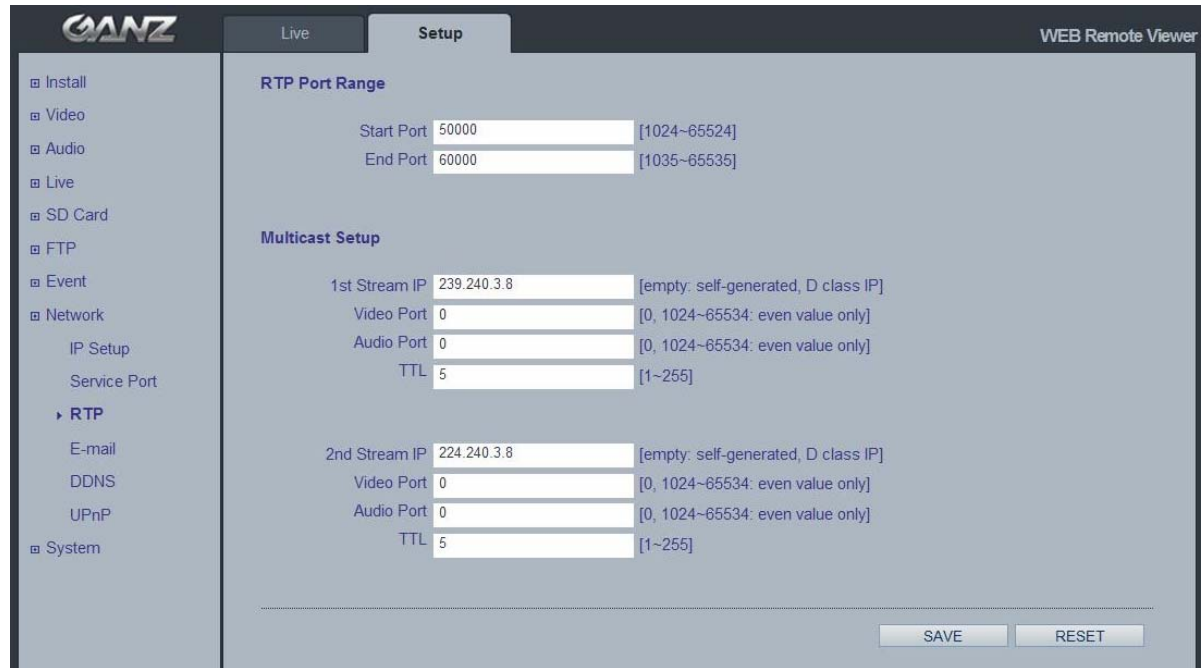
The RTSP protocol allows a connecting client to start an H.264 stream. Enter the RTSP port number to use. The default setting is 554.

HTTPS port (HTTPS will be supported in v3.0)

The default HTTPS port number (**443**) could be changed to any port within the valid range (1024-65535). HTTPS is used to provide encrypted web browsing.

NOTE: After changing the default port numbers, the user can use the 'PixelPro Discovery Tool' to search and connect automatically if they can't remember the specific port numbers that they used.

11.3 RTP



RTP Port Range

The IP address, port number, and Time-To-Live (TTL) value to use for the video stream(s) in multicast H.264 format. Only certain IP addresses and port numbers should be used for multicast.

11.4 E-mail

The screenshot displays the 'E-mail Setup' configuration page in the GANZ WEB Remote Viewer. The interface includes a sidebar with navigation options such as 'Install', 'Video', 'Audio', 'Live', 'SD Card', 'FTP', 'Event', 'Network', 'IP Setup', 'Service Port', 'RTP', 'E-mail', 'DDNS', 'UPnP', and 'System'. The 'E-mail Setup' section contains the following fields and controls:

- Notification: ON (dropdown menu)
- Frequency: 5 Min (dropdown menu)
- Server: smtp.ipcam.com (text input)
- Port: 25 (text input)
- Security: ON (dropdown menu)
- User: user@ipcam.com (text input)
- Password: masked with dots (password input)
- From: user@ipcam.com (text input)

At the bottom right, there are 'SAVE' and 'RESET' buttons. Below the form, there is a 'Go to:' section with two links: [Setup To enable Address](#) and [Setup Event Mapping](#).

You must turn Notification to 'On' and then enter the host names or addresses for your mail servers in the fields provided, to enable the sending of event and error email messages from the camera to predefined addresses via SMTP.

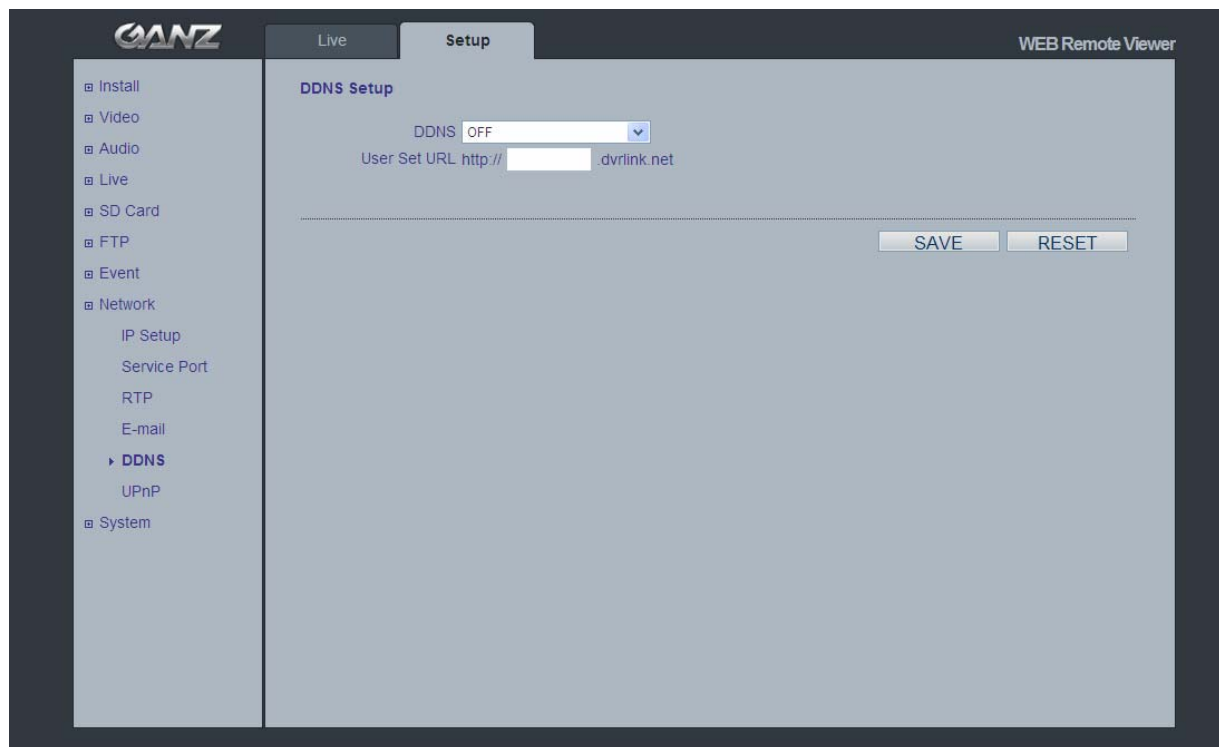
Note1)

Frequency : Mail server may register the sender to SPAM list when frequency is set to "1 Min". It may be better to set "5 Min" for safe side.

Note2)

From : Specify the name who sent e-mail notification. It may be better to use e-mail format like as [aaa@bbb.com](#). Some e-mail server will refuses it.

11.5 DDNS



The GANZ Dynamic Domain Name Service (DDNS) can provide your GANZ product with its own name server address (URL), which can then be used to access it over the Internet. The product can be unregistered from the service at any time. To do this click Network > DDNS and turn the DDNS off.

How to setup the DDNS:

1) DDNS set to ON.

“*mac address.dvrlink.net*” is registered to the DDNS server.

User can connect to the camera with: “*http://mac address.dvrlink.net*”.

2) DDNS set to ON and user inputs “*user-defined name*”.

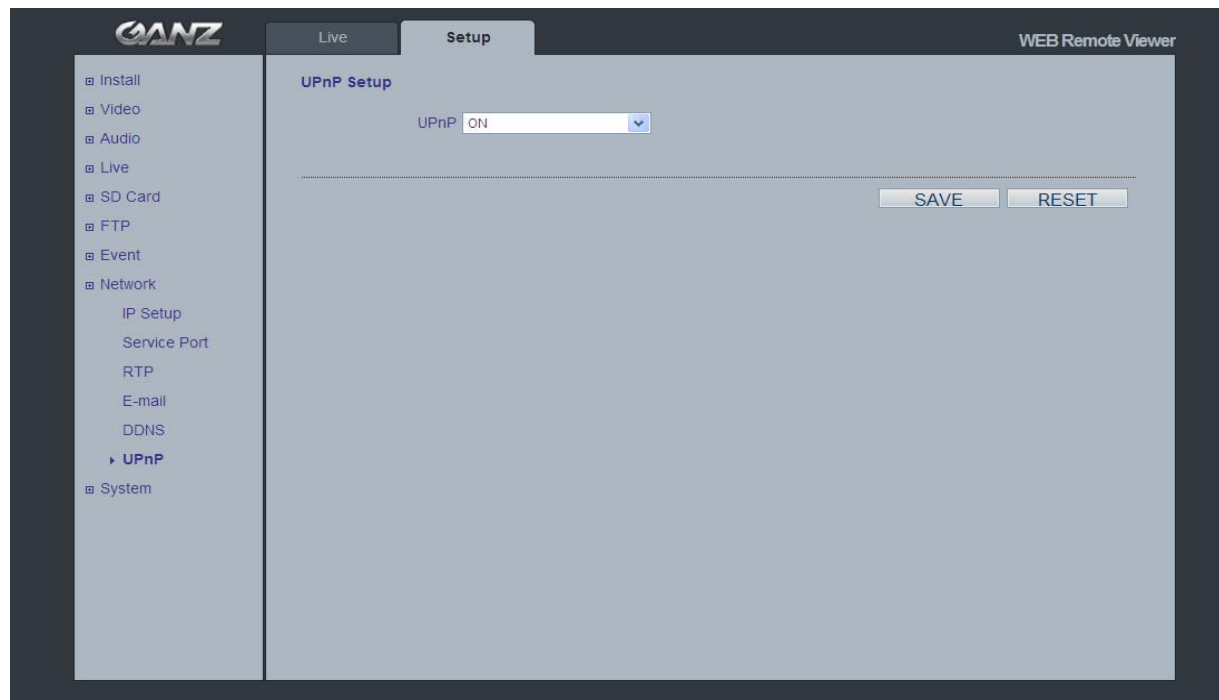
“*mac address.dvrlink.net*” and “*user-defined name.dvrlink.net*” are both registered together.

User can connect to the camera using either:

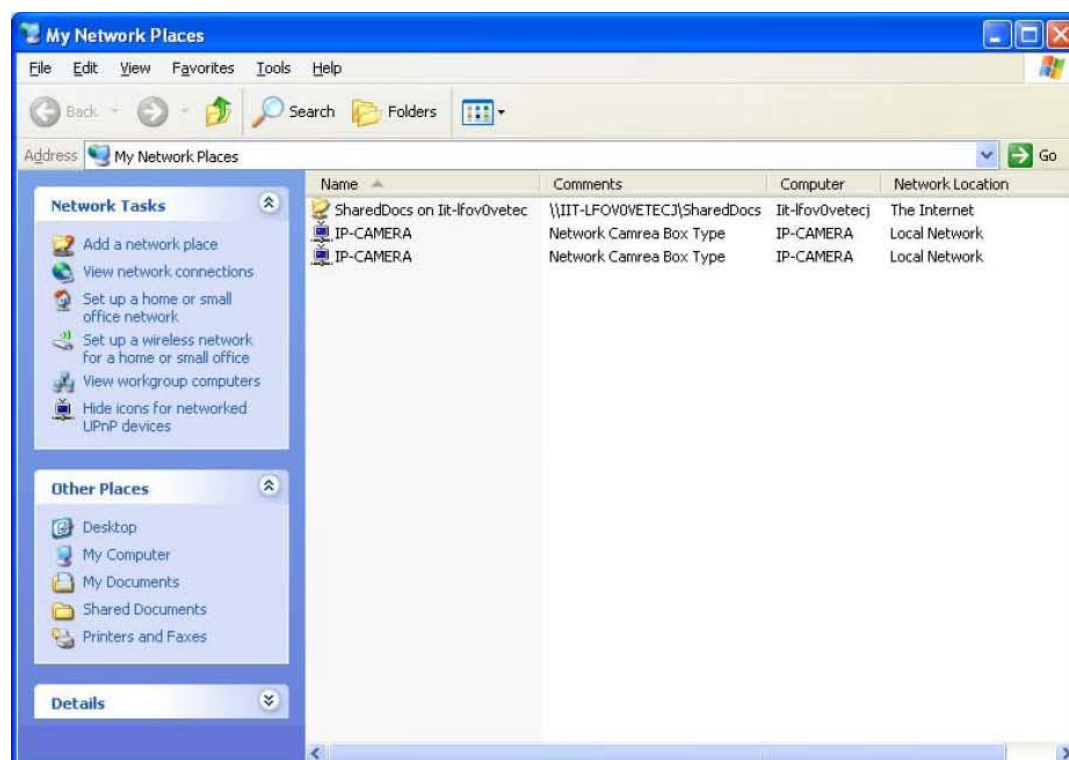
“*http://mac address.dvrlink.net*” or “*http://user-defined name.dvrlink.net*”.

If “*user-defined name*” is already registered, an error message is shown, try a different name.

11.6 UPnP



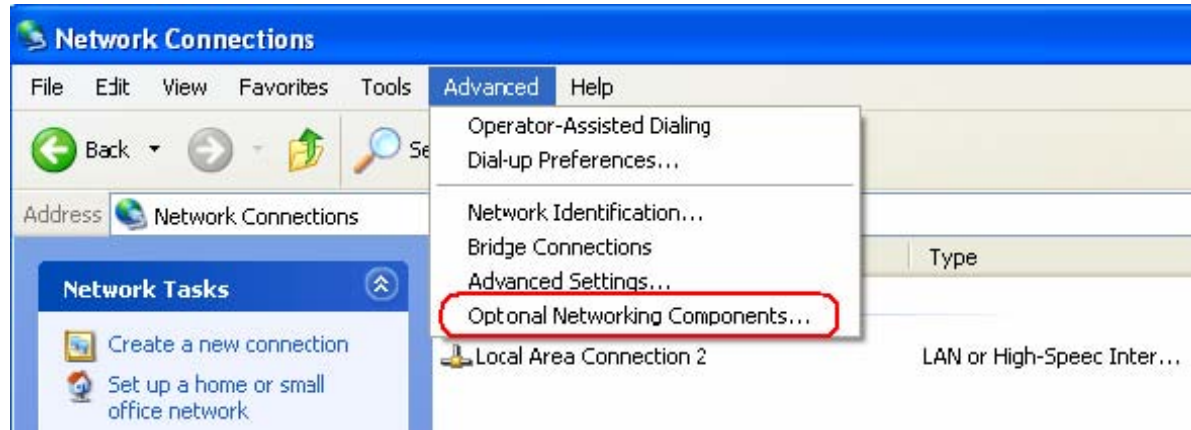
Universal Plug & Play (UPnP) allows you to find the IP camera automatically on your network.



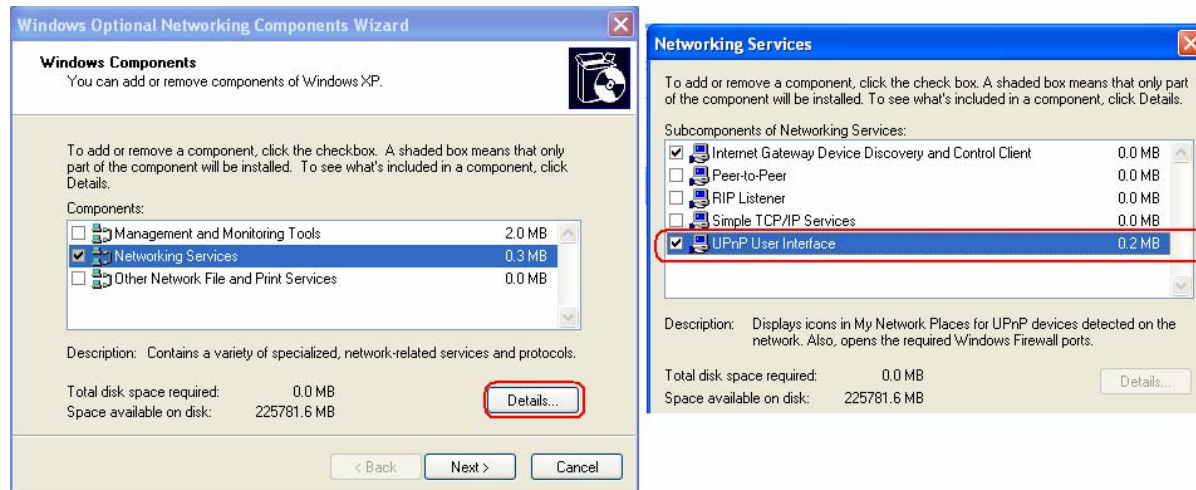
In order to be able to detect the camera automatically, you must enable the UPnP function on both the camera and on your PC.

Camera : Set UPnP to "ON"

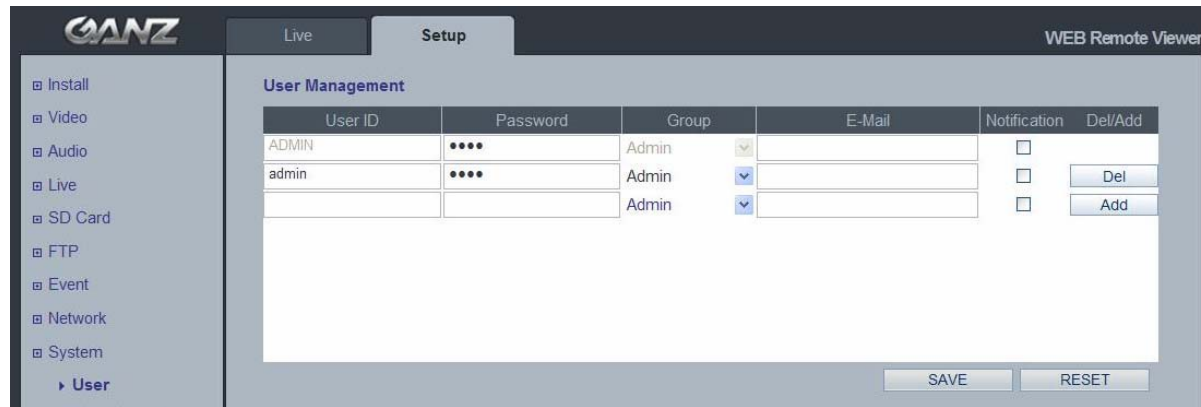
PC : Open "Control Panel" >"Network Connection"
Select "Advanced" >"Optional Networking Components..."



Select "Network Services" and click "Details". Then select "UPnP user Interface"



12. System



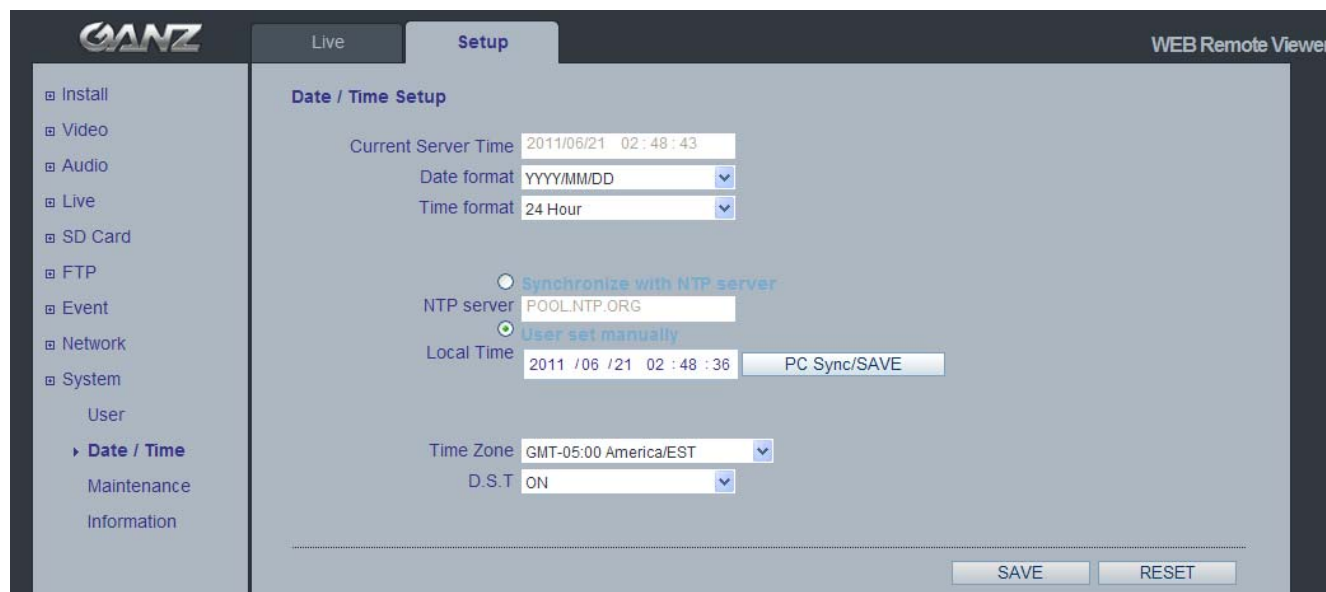
12.1 User

When you access the camera, the Configure Root Password dialog box appears. Enter the user name **ADMIN** and password **1234** to log in.

To change the password or add a user, go to Setup > System > User. Fill in the User ID, Password and E-mail server. Select the Group. Then press the 'ADD' button and click 'SAVE'.

NOTE: The default administrator username **ADMIN** is permanent and cannot be deleted or altered.

12.2 Date & Time



Date & Time Format

Specify the formats for the date and time (12h or 24h) displayed in the Live View video streams.

NTP Server

Synchronize the time from an NTP server every 60 minutes. Specify the IP address or host name of the NTP server you are using.

Local Time / PC Sync/SAVE

Specify Local time manually or Synchronize to PC time automatically.

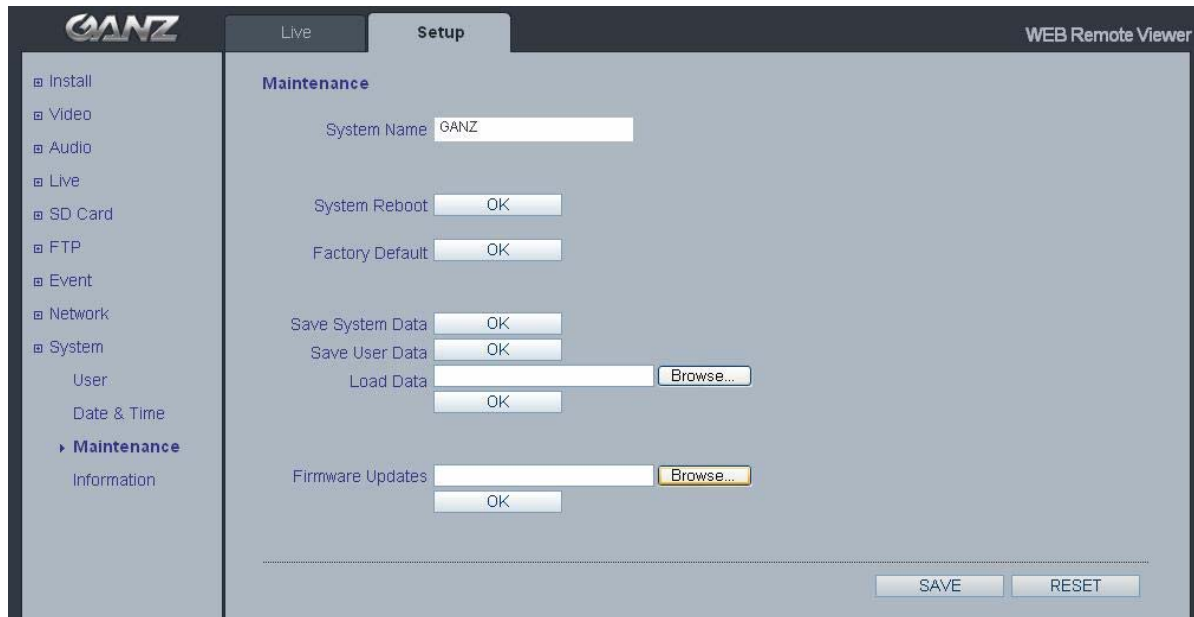
Time Zone Setup

You may select your time zone from the drop-down list.

D.S.T (Daylight Saving Time)

Toggle automatic DST clock adjustment on/off.

12.3 Maintenance



System Name

Choose a system name to identify the camera when using e-mail notifications.

System Reboot

Reboots the camera.

Factory Default

To reset the camera back to the original factory default settings.

Save User Data

System settings can be saved to a PC.

Load User Data

The system settings can be reloaded in case of accidental factory reset or can be transferred to another camera if multiple units need to be installed with the same settings.

Firmware Update

From time to time, CBC will release firmware updated for the PixelPro Series camera, which will contain feature additions and other improvements. Always read the upgrade instructions and release notes that accompany each new firmware release, before updating the firmware.

NOTE: *Preconfigured and customized settings should be saved before the firmware is upgraded.*

Firmware Update Procedure

1. Save the firmware file to your computer.
2. Go to Setup > System > Maintenance within the camera web browser setup.
3. In the Firmware Update section, browse to the desired firmware file on your computer. Click OK.

NOTE: *Do not disconnect power to the unit during the upgrade. The unit will restart automatically after the upgrade has completed. (1~5 minutes)*

4. If you suspect the firmware upgrade for the camera has failed, always wait at least 5-10 minutes before restarting the upgrade process.
5. CBC reserves the right to charge for any camera repair which can be attributed to faulty upgrading by the user. Always read the upgrade instructions and firmware release notes before updating the firmware.

System Reset (Factory Default Reset)

There are two ways to reset the camera back to factory default.

Using the web browser:

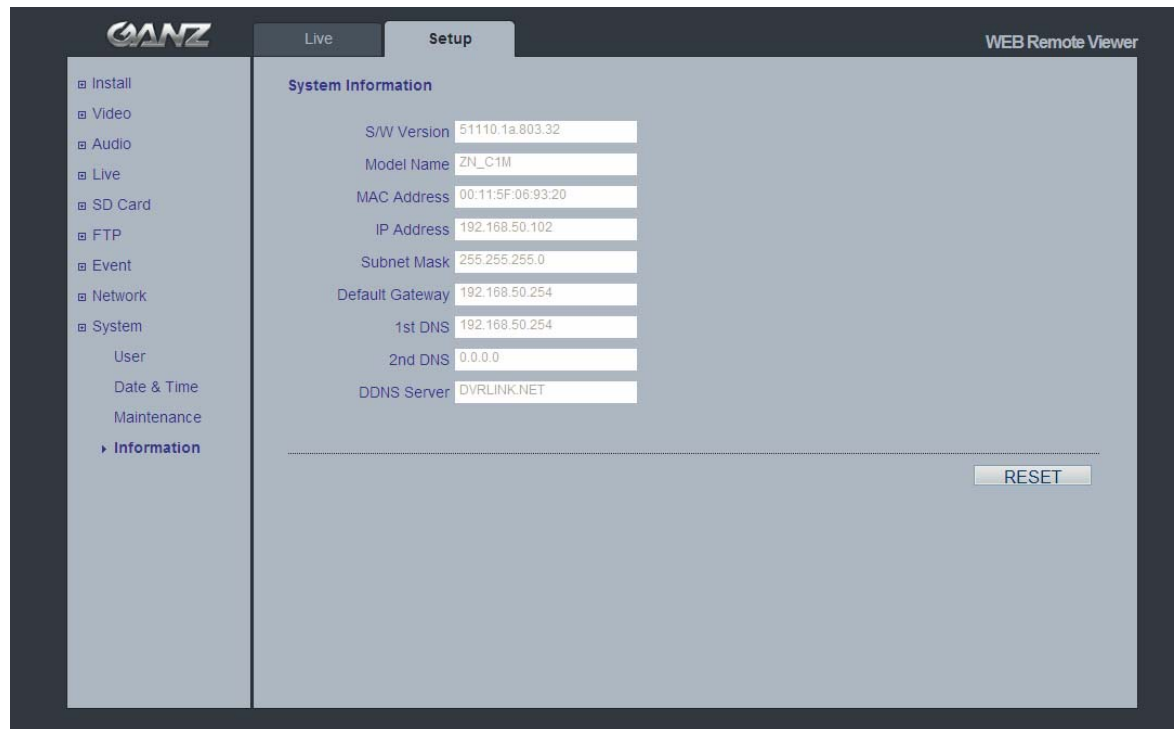
1. Go to SETUP > System > Maintenance.
2. Click Factory Default Button and wait 1 minute for camera to reboot.

Using the Reset Button of the camera:

1. Keep the Reset button pressed until the Status Indicator color changes to RED and starts blinking (which may take up to 15 seconds).
2. Release the Reset button.
3. When the Status Indicator changes to Green (which may take up to 1 minute), the process is complete and the camera has been reset.

NOTE: *The unit will now have the default IP address from a DHCP server.
Use the 'PixelPro Discovery Tool' to discover and connect to the camera.*

12.4 Information



System Information

After updating firmware, you can confirm the new F/W version here.



English

Disposal of your old appliance

1. When this crossed-out wheeled bin symbol is attached to a product it means the product is covered by the European Directive 2002/96/EC.
2. All electrical and electronic products should be disposed of separately from the municipal waste stream via designated collection facilities appointed by the government or the local authorities.
3. The correct disposal of your old appliance will help prevent potential negative consequences for the environment and human health.
4. For more detailed information about disposal of your old appliance, please contact your city office, waste disposal service or the shop where you purchased the product.

Français/French

Élimination de votre ancien appareil

1. Ce symbole, représentant une poubelle sur roulettes barrée d'une croix, signifie que le produit est couvert par la directive européenne 2002/96/EC.
2. Tous les produits électriques et électroniques doivent être éliminés séparément de la chaîne de collecte municipale des ordures, par l'intermédiaire des installations de collecte prescrites et désignées par le gouvernement ou les autorités locales.
3. Une élimination conforme aux instructions aidera à réduire les conséquences négatives et risques éventuels pour l'environnement et la santé humaine.
4. Pour plus d'informations concernant l'élimination de votre ancien appareil, veuillez contacter votre mairie, le service des ordures ménagères ou encore le magasin où vous avez acheté ce produit.

Deutsch/German

Entsorgung von Altgeräten

1. Wenn dieses Symbol eines durchgestrichenen Abfallimers auf einem Produkt angebracht ist, unterliegt dieses Produkt der europäischen Richtlinie 2002/96/EC.
2. Alle Elektro- und Elektronik-Altgeräte müssen getrennt vom Hausmüll über die dafür staatlich vorgesehenen Stellen entsorgt werden.
3. Mit der ordnungsgemäßen Entsorgung des alten Geräts vermeiden Sie Umweltschäden und eine Gefährdung der persönlichen Gesundheit.
4. Weitere Informationen zur Entsorgung des alten Geräts erhalten Sie bei der Stadtverwaltung, beim Entsorgungsamt oder in dem Geschäft, wo Sie das Produkt erworben haben.

Italiano/Italian

RAEE: SMALTIMENTO DELLE VOSTRE VECCHIE APPARECCHIATURE

1. Quando il simbolo del "Cassonetto Barrato" è apposto su un prodotto, significa che lo stesso può ricadere nei termini previsti dalla Direttiva Europea nr. 2002/96/EC in funzione dell'attuazione definita dalla Legislazione dei singoli stati membri dell'Unione Europea.
2. Tutti i prodotti elettrici ed elettronici dovrebbero essere smaltiti separatamente dai rifiuti municipali, tramite appositi contenitori, approvati dall'Amministrazione Comunale o dalle Autorità Locali.
3. Il corretto smaltimento delle vostre vecchie apparecchiature, contribuirà a prevenire possibili conseguenze di impatto negativo sull'ambiente e per la salute dell'uomo.
4. Per maggiori informazioni circa lo smaltimento delle vostre vecchie apparecchiature, siete pregati di contattare l'ufficio municipale della vostra città, il servizio di smaltimento rifiuti o il punto vendita nel quale avete acquistato il prodotto.

Polski/Polish

Utylizacja starych urządzeń

1. Kiedy do produktu dołączony jest niniejszy przekreślony symbol kołowego pojemnika na śmieci, oznacza to, że produkt jest objęty europejską dyrektywą 2002/96/EC.
2. Wszystkie elektryczne i elektroniczne produkty powinny być utylizowane niezależnie od odpadów miejskich, z wykorzystaniem przeznaczonych do tego miejsc składowania wskazanych przez rząd lub miejscowe władze.
3. Właściwy sposób utylizacji starego urządzenia pomoże zapobiec potencjalnie negatywnemu wpływowi na zdrowie i środowisko.
4. Aby uzyskać więcej informacji o sposobach utylizacji starych urządzeń, należy skontaktować się z władzami lokalnymi, przedsiębiorstwem zajmującym się utylizacją odpadów lub sklepem, w którym produkt został kupiony.

Português/Portuguese

Eliminação do seu antigo aparelho

1. Quando este símbolo de latão cruzado estiver afixado a um produto, significa que o produto é abrangido pela Directiva Europeia 2002/96/EC.
2. Todos os produtos eléctricos e electrónicos devem ser eliminados separadamente da coleta de lixo municipal através de pontos de recolha designados, facilitados pelo governo ou autoridades locais.
3. A eliminação correcta do seu aparelho antigo ajuda a evitar potenciais consequências negativas para o ambiente e para a saúde humana.
4. Para obter informações mais detalhadas acerca da eliminação do seu aparelho antigo, contacte as autoridades locais, um serviço de eliminação de resíduos ou a loja onde comprou o produto.

Español/Spanish

Cómo deshacerse de aparatos eléctricos y electrónicos viejos

1. Si en un producto aparece el símbolo de un contenedor de basura tachado, significa que éste se acoge a la Directiva 2002/96/EC.
2. Todos los aparatos eléctricos o electrónicos se deben desechar de forma distinta del servicio municipal de recogida de basura, a través de puntos de recogida designados por el gobierno o las autoridades locales.
3. La correcta recogida y tratamiento de los dispositivos inservibles contribuye a evitar riesgos potenciales para el medio ambiente y la salud pública.
4. Para obtener más información sobre cómo deshacerse de sus aparatos eléctricos y electrónicos viejos, póngase en contacto con su ayuntamiento, el servicio de recogida de basuras o el establecimiento donde adquirió el producto.

AMERICA

CBC (AMERICA) CORP.
New York / California
<http://www.cbcamerica.com>

EUROPE

CBC (EUROPE) LTD.
London
<http://www.cbceurope.com>

CBC (EUROPE) LTD.
Milan
<http://www.cbceurope.it/cctv>
info@cbc-europe.it

CBC (DEUTSCHLAND) GmbH
Dusseldorf
<http://www.cbc-de.com>

CBC (POLAND) Sp.zo.o
Warszawa
<http://www.cbcpoland.pl>

CBC Co., Ltd. MOSCOW REP OFFICE
Moscow
<http://www.cbc.ru>

CHINA

CBC(Beijing) Trading CO.,LTD.
Beijing
<http://www.cbc-china.cn/10/>

CBC (SHANGHAI) TRADING CO., LTD.
Shanghai
<http://www.cbc-china.cn/10/>

CBC SHANGHAI CO., LTD. GUANGZHOU OFFICE
Guangzhou
<http://www.cbc-china.cn/10/>

CBC (H.K.) CO., LTD.
Hong Kong
<http://www.cbc-china.cn/10/>

ASIA

CBC. S PTE LTD.
Singapore

CBC(THAILAND) CO., LTD.
Bangkok

CBC CO., LTD. MUMBAI REP OFFICE
Mumbai

CBC CO., LTD. JAKARTA REP OFFICE
Jakarta

CBC (TAIWAN) CO., LTD.
Taipei
<http://www.computar.com.tw/>



CBC Co.,Ltd.
www.GANZ.jp