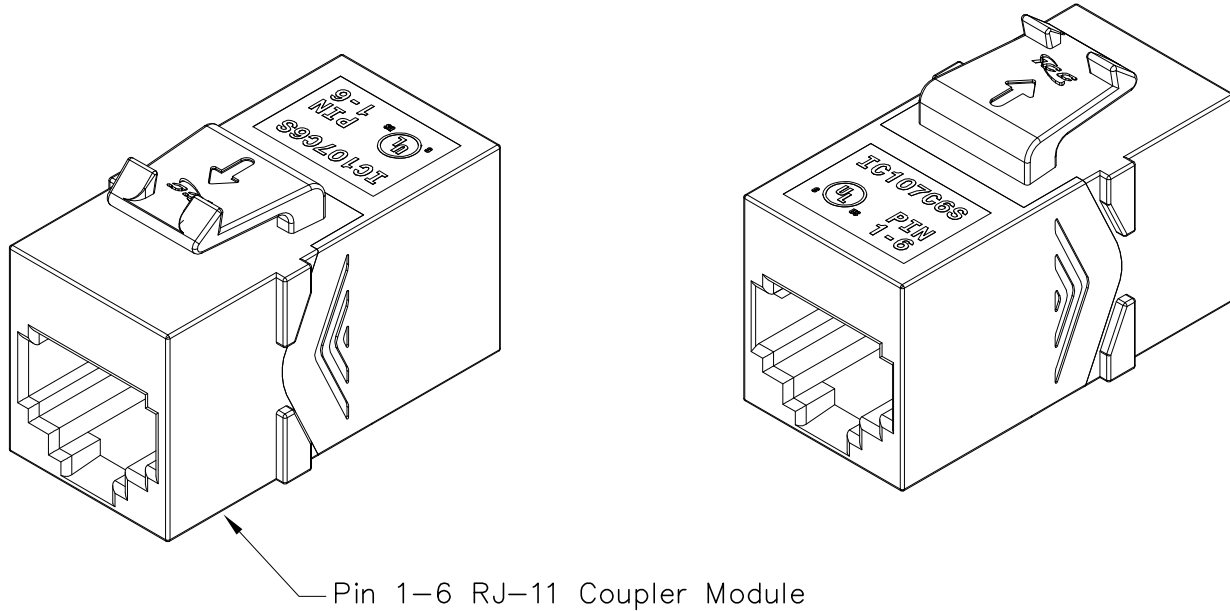


# 6P6C RJ-11 Coupler Module, Pin 1-6

## PRODUCT SPECIFICATION

### Package includes:

A. Pin 1-6 6P6C RJ-11 Coupler Module, 1 pc



### Features and Benefits:

- Provides pin 1-6 RJ-11 voice coupling
- Reduced rear footprint allows for greater connectivity density and provides for more port configurations in a smaller area
- Compatible with all IC107 faceplates, inserts, surface mount boxes, and blank patch panels
- Compatible with all IC108 furniture faceplates, bezels, and surface mount boxes
- Available in black, ivory, and white
- UL listed

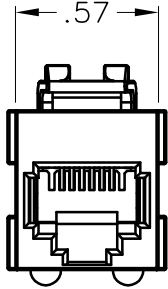
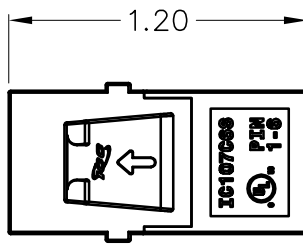
### MODULE, COUPLER, RJ-11, PIN 1-6

ITEM NO. IC107C6SXX  
 DWG NO. PS107C6S00

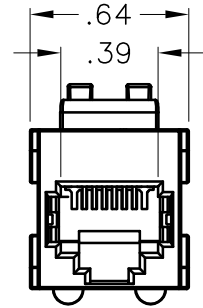
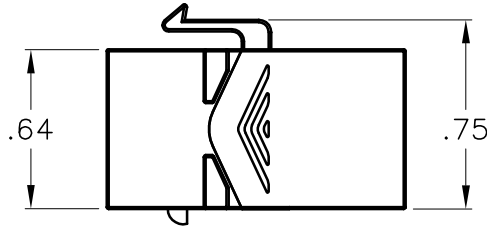
REV. B  
 PAGE NO. 1



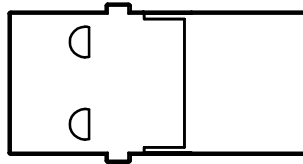
CUSTOMER CARE / TECHNICAL SUPPORT \* CSR@ICC.COM / 888-ASK-4-ICC (275-4422) \* 14700 Alondra Blvd., La Mirada, CA 90638 \* www.icc.com



**FRONT**



**REAR**



**NOTE: UNLESS OTHERWISE SPECIFIED**

1. ELECTRICAL:

- A. CURRENT RATING: 1.5 AMPS MAX
- B. VOLTAGE RATING: 150 VOLTS ALTERNATING
- C. DIELECTRIC WITHSTANDING VOLTAGE: 1000 VOLTS RMS, 60 HZ
- D. INSULATION RESISTANCE: > 10 MOHMS

2. MECHANICAL:

- A. MATING FORCE: 5 LBS MAX
- B. UNMATING FORCE: 5 LBS MAX
- C. PLUG RETENTION IN JACK: 20 LBS MIN
- D. DURABILITY: 750 CYCLES

3. MATERIAL & FINISH:

- A. HOUSING: ABS, UL 94V-0
- B. COLOR: BK-BLACK, IV-IVORY, & WH-WHITE
- C. CONTACT: PHOSPHOR BRONZE GOLD PLATING OVER 100 MICRO INCH NICKEL
- D. GOLD PLATING: 1.27 MICRON/50 MICRO INCH MIN

WIRING DIAGRAM	
PIN	PIN
1	6
2	5
3	4
4	3
5	2
6	1

UL US FILE NO. 125268

**MODULE, COUPLER, RJ-11, PIN 1-6**

ITEM NO. IC107C6SXX  
 DWG NO. PS107C6S00

REV. B  
 PAGE NO. 2



CUSTOMER CARE / TECHNICAL SUPPORT \* CSR@ICC.COM / 888-ASK-4-ICC (275-4422) \* 14700 Alondra Blvd., La Mirada, CA 90638 \* www.icc.com