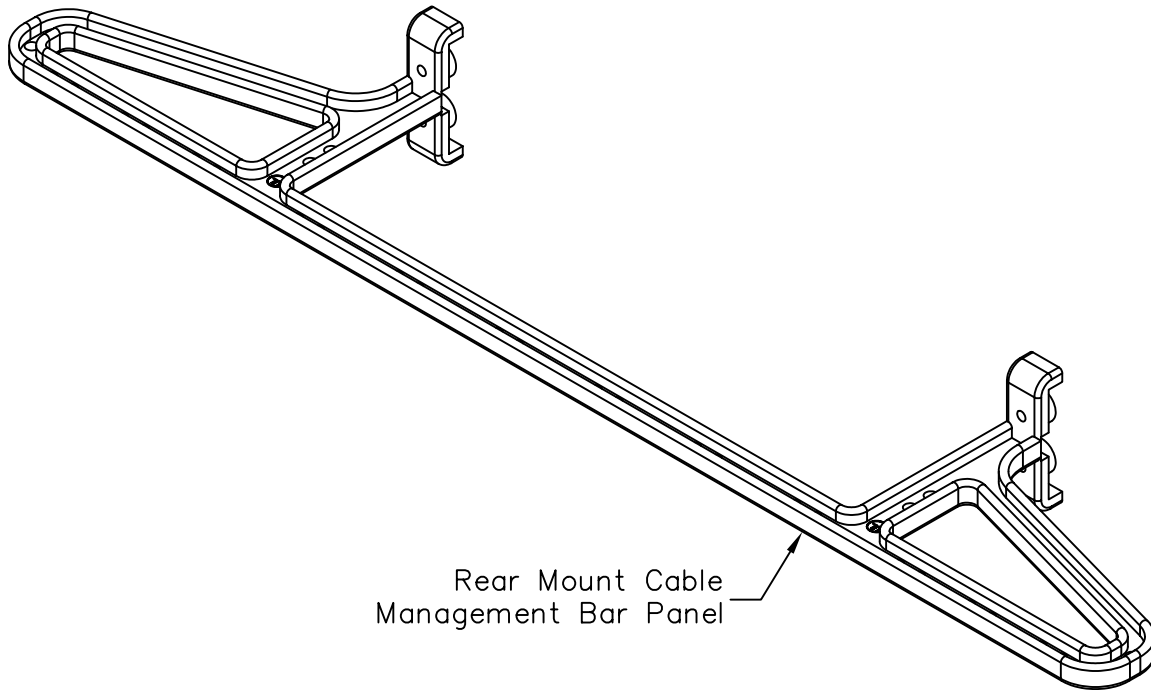


Rear Mount Cable Management Bar Panel

PRODUCT SPECIFICATION

Package includes:


- A. Rear Mount Cable Management Bar Panel, 1 pc
- B. 3mm X 16mm LG Pan Head, Combination Drive Tapping Screw, 4 pcs
- C. Installation Instructions, 1 sheet



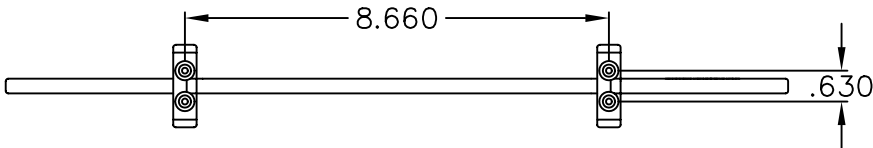
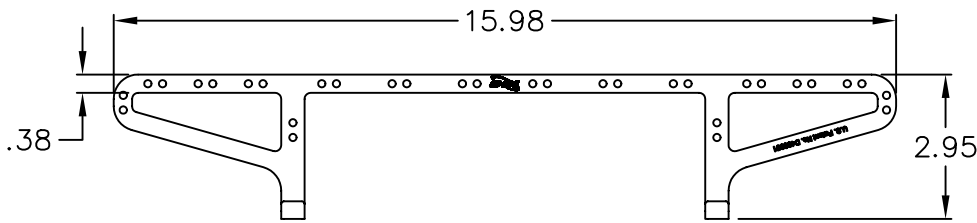
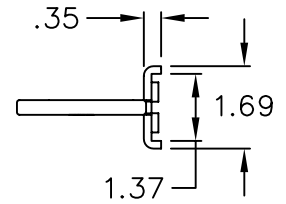
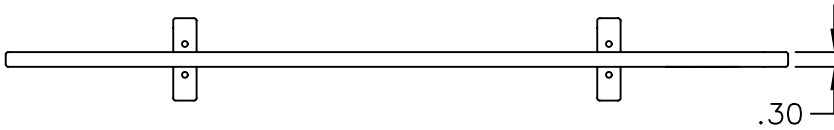
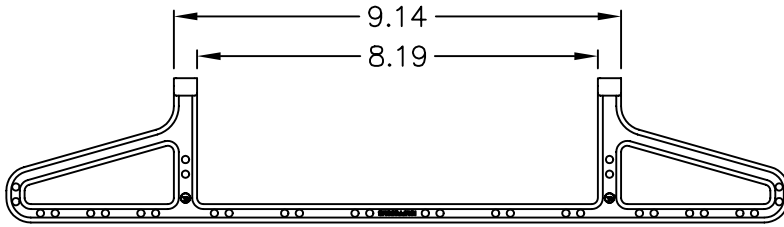
Features and Benefits:

- Designed to mount on the rear side of 110-type patch panels for rear cable support
- Used with ICMPP CAT 5e and CAT 6 patch panels
- Installation instructions #MSR-0269 included
- UL listed

PANEL, CABLE MANAGEMENT BAR, REAR MOUNT

ITEM NO.	ICMPP25CMB	REV.	A	 PremiumProducts ProvenPerformance CompetitivePrices
DWG NO.	PSMPP25CMB	PAGE NO.	1	

CUSTOMER CARE / TECHNICAL SUPPORT * CSR@ICC.COM / 888-ASK-4-ICC (275-4422) * 14700 Alondra Blvd., La Mirada, CA 90638 * www.icc.com



NOTE: UNLESS OTHERWISE SPECIFIED

1. MATERIAL: ABS, UL 94V-0
2. COLOR: BLACK

UL US FILE NO. 125268

PANEL, CABLE MANAGEMENT BAR, REAR MOUNT



ITEM NO. ICMPP25CMB
DWG NO. PSMPP25CMB

REV. A
PAGE NO. 2

CUSTOMER CARE / TECHNICAL SUPPORT * CSR@ICC.COM / 888-ASK-4-ICC (275-4422) * 14700 Alondra Blvd., La Mirada, CA 90638 * www.icc.com