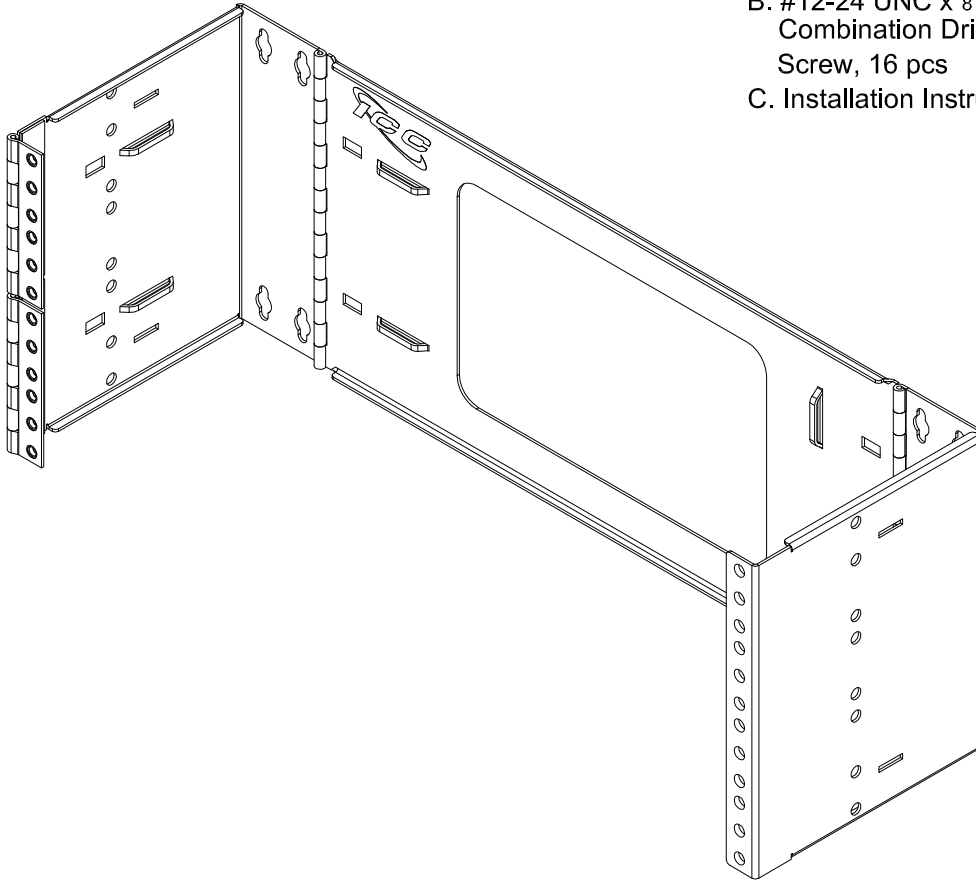


EZ FOLD Wall Mount Hinged Bracket, 4 RMS

PRODUCT SPECIFICATION

Package includes:

- A. Folding Wall Mount Hinged Bracket, 1 pc
- B. #12-24 UNC x $\frac{5}{8}$ "⁵, Black Oxide, Pan Head, Combination Drive, Pilot Point, Machine Screw, 16 pcs
- C. Installation Instructions, 1 pc



Features and Benefits:

- Designed with high quality steel and black powder coating.
- Designed with a 6" depth making it ideal for installing voice and data equipment such as patch panels and cable management products creating an organized system.
- Up to 40 lbs weight capacity when properly secured to surface.
- Divided hinge allows easy access for upgrades and maintenance.
- Ideal for installations with space restrictions.
- 4 rack mount space (RMS).
- Compatible with cover ICCMSHBCVR.

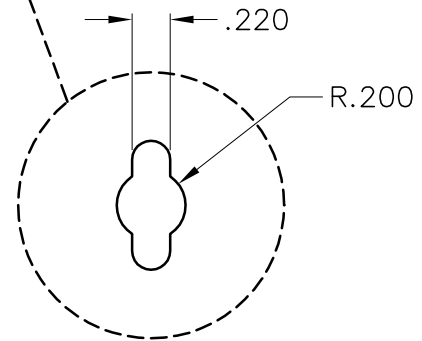
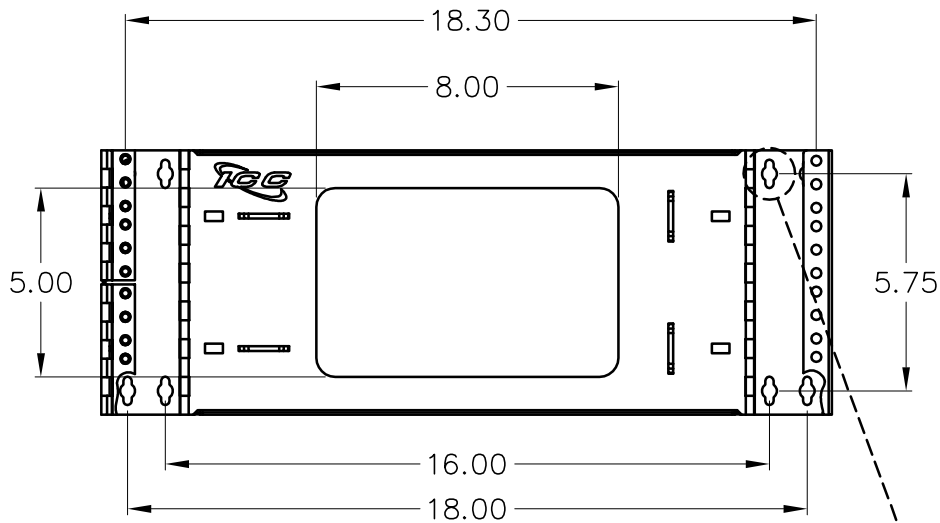
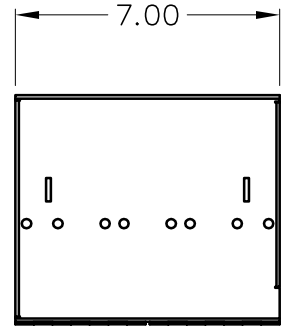
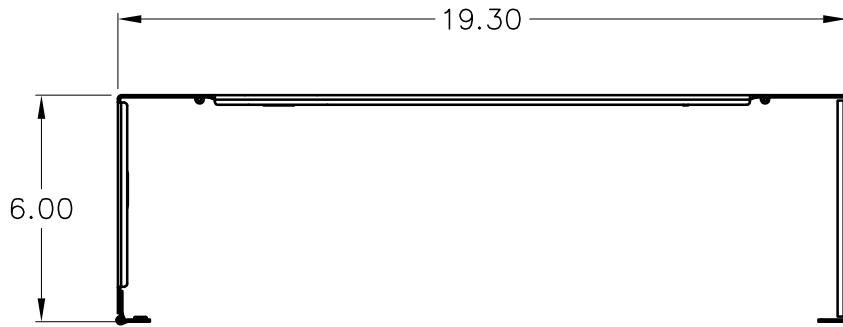
BRACKET WALL MNT, EZ-FOLD, 6"D, 4U



ITEM NO.	ICCMSABR64
DWG NO.	PSCMSABR64

REV.	A
PAGE NO.	1

888-ASK-4-ICC (275-4422) * CSR@ICC.COM * WWW.ICC.COM



NOTE: UNLESS OTHERWISE SPECIFIED

- 1. MATERIAL: 16 GA CRS
- 2. FINISH: BLACK POWDER COAT
- 3. EIA-310-D COMPLIANT

BRACKET WALL MNT, EZ-FOLD, 6"D, 4U			
ITEM NO.	ICCMSABR64		REV. A
DWG NO.	PSCMSABR64		PAGE NO. 2

888-ASK-4-ICC (275-4422) * CSR@ICC.COM * WWW.ICC.COM