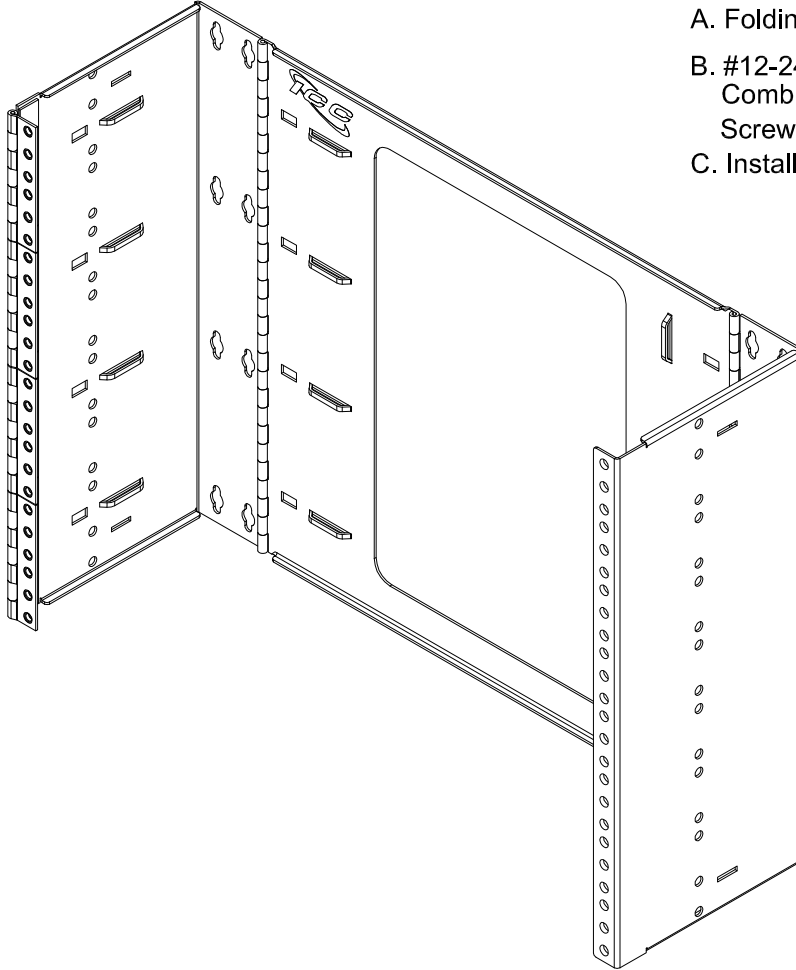


EZ FOLD Wall Mount Hinged Bracket, 8 RMS

PRODUCT SPECIFICATION



Package includes:

- A. Folding Wall Mount Hinged Bracket, 1 pc
- B. #12-24 UNC x $\frac{5}{8}$ "⁵, Black Oxide, Pan Head, Combination Drive, Pilot Point, Machine Screw, 32 pcs
- C. Installation Instructions, 1 pc

Features and Benefits:

- Designed with high quality steel and black powder coating.
- Designed with a 6" depth making it ideal for installing voice and data equipment such as patch panels and cable management products creating an organized system.
Up to 80 lbs weight capacity when properly secured to surface.
- Divided hinge allows easy access for upgrades and maintenance.
- Ideal for installations with space restrictions.
- 8 rack mount space (RMS).
- Compatible with cover ICCMSHBCVR.

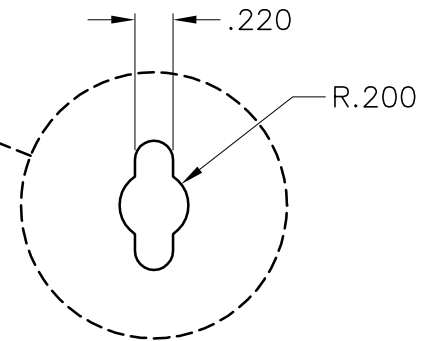
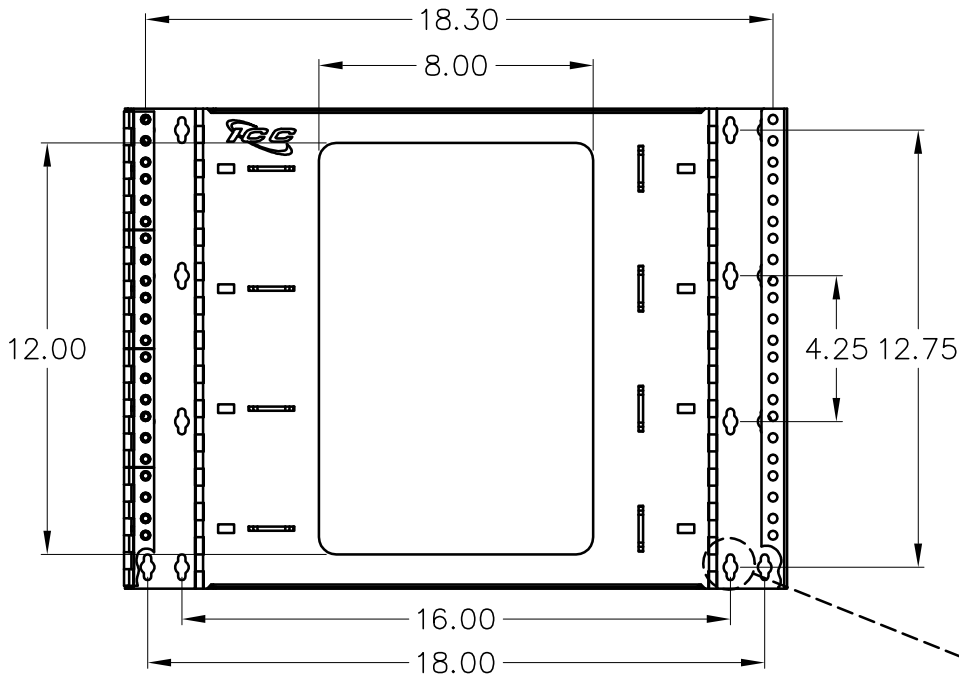
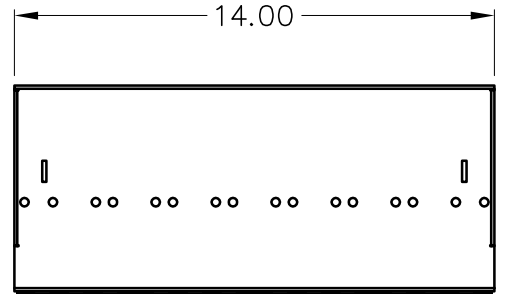
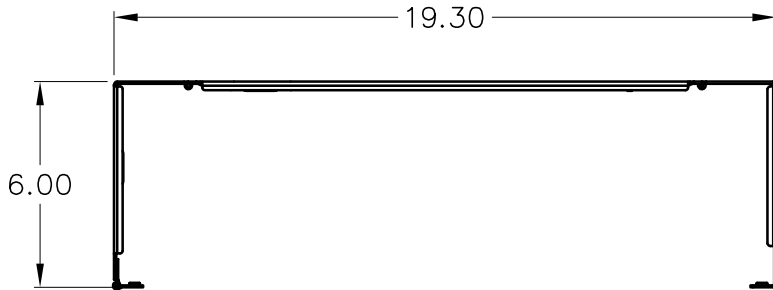
BRACKET, WALL MNT, EZ-FOLD, 6"D, 8U



ITEM NO. ICCMSABR68
DWG NO. PSCMSABR68

REV. A
PAGE NO. 1

888-ASK-4-ICC (275-4422) * CSR@ICC.COM * WWW.ICC.COM



NOTE: UNLESS OTHERWISE SPECIFIED

- 1. MATERIAL: 16 GA CRS
- 2. FINISH: BLACK POWDER COAT
- 3. EIA-310-D COMPLIANT

BRACKET, WALL MNT, EZ-FOLD, 6"D, 8U			
ITEM NO.	ICCMSABR68		REV. A
DWG NO.	PSCMSABR68		PAGE NO. 2

888-ASK-4-ICC (275-4422) * CSR@ICC.COM * WWW.ICC.COM