

## **Installation and Set-up of Dome Camera Wall Arm (ZC) !WM2A'#N7 , !K A 85 )**

The dome camera wall arm mount is designed to provide a sturdy and aesthetic mounting option for the GANZ ZC-D5000 and ZC-D8000 Series of outdoor dome cameras.

The wall arm can be mounted to any vertical flat surface 6-inches or wider. Before mounting the wall arm, determine the location and camera position required. Select the appropriate fasteners for the type of surface material used at the wall arm mounting location. Also, consider the cable path for power and video cables to the wall arm's location.

For mounting locations with a flat surface of less than 6-inches or for mounting to a recessed or surface mounted double gang electrical box, it is recommended to use adaptor plate ZCA-GAP, sold separately.

For round poles 3-inches to 12- inches in diameter, it is recommended to use pole mount adaptor PMA2, sold separately. For mounting locations or conditions other than those described, please contact your sales representative for additional support.

The wall arm provides three (3) mounting points. It is recommended using fasteners with a minimum pull out strength of 70-lbs each. Three (3) #12 x 1 ½" Philips head screws with plastic anchors are provided. Considering the type of the mounting surface material, verify the fastener type used will provide the strength required.

Hold the wall arm in the desired mounting position with the back mounting plate against the mounting surface and the camera mounting surface facing down. Mark the vertical mounting hole locations. Mark location of the cable entry position.

After hole locations are marked, drill appropriate size hole for cable type used, if needed. Drill appropriate size hole for the fasteners selected for the type of mounting surface. To use the fasteners provided, it is recommended to drill an 11/32" hole for anchor, tap anchor into place. If no anchor is required, drill an 11/64" hole for fastener threads.

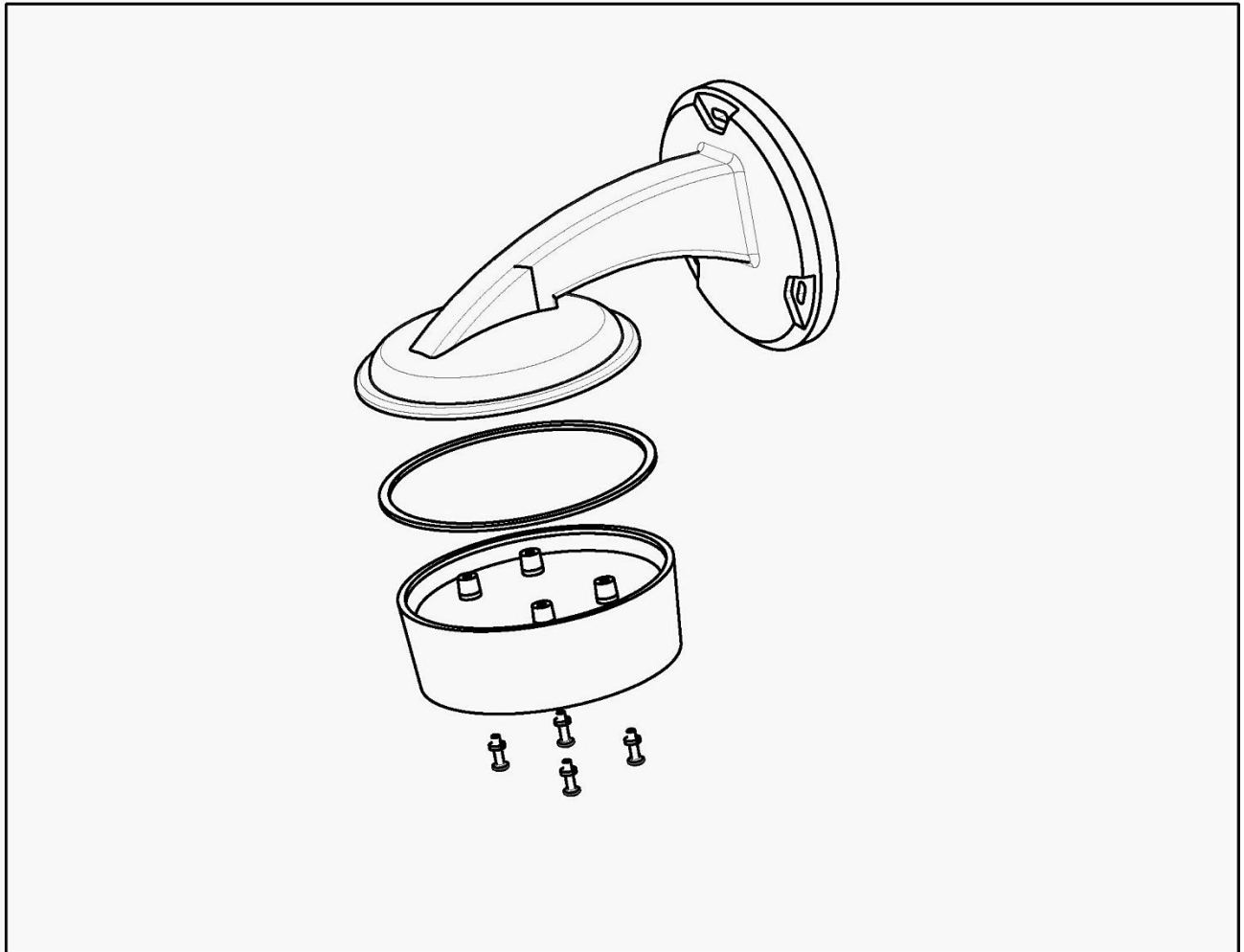
If the mounting surface is extremely rough or uneven, additional sealing of the wall arm back plate to the mounting surface may be required. Verify the wall arm gasket is making good contact against the entirety of the mounting surface. Position wall arm in place over holes, install fasteners until secure.

See page 2 for directions on installing ZC-D5000 series cameras to the wall arm mount.

See page 3 for directions on installing ZC-D8000 series camera to the wall mount.

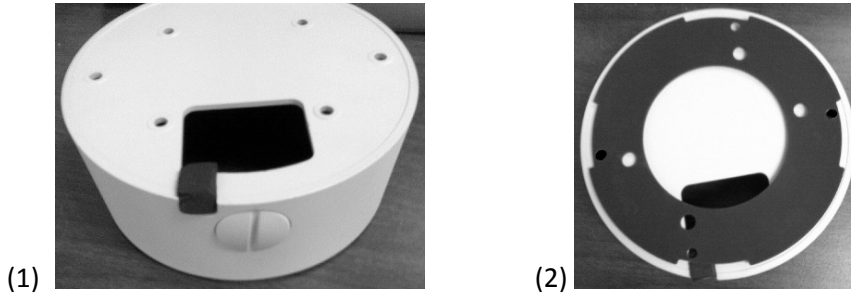
## ZC-) Series Installation

Apply gasket provided with camera in the groove of the wall arm's camera mounting plate. Make wiring connections as shown in the camera instruction manual. Position camera housing base on the camera mounting plate with side conduit hole facing the wall arm back plate, attach base using the four screws provided. Install camera and complete installation per the camera's instructions.



**ZC-) 8000 Series Installation:**

Apply 3/8" x 1/2" gasket to cable groove in the camera housing base (1).



Apply base gasket provided with camera to camera housing base, aligning outer two mounting holes (2).

Position camera housing base on the camera mounting plate with side conduit hole facing the wall arm back plate, attach base using the two screws and washers provided. Install camera and complete installation per the camera's instructions.

