



MegaView™ v1 Series **Installation Manual**

 **Arecont Vision**
megapixel technology...
beyond imagination

Arecont Vision MegaView™ v1 Installation Manual

MegaView™ v1 Installation Manual

Inside the box:

- A. Arecont Vision MegaView™ v1
- B. Pack of four (4) wood screws and four (4) dry wall anchors
- C. Security L-key
- D. Mounting Template

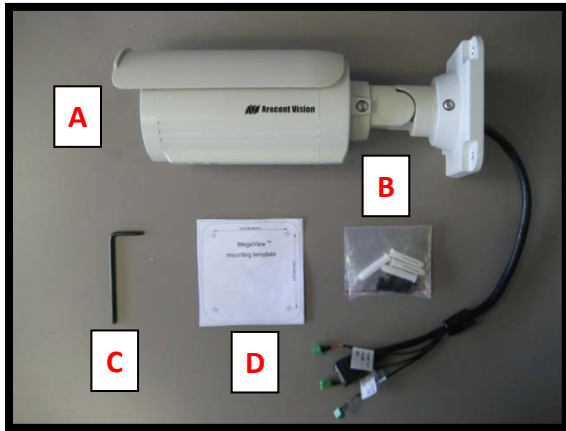


Image 1

Not included but needed:

- #1 Phillips head screw driver
- #2 Phillips head screw driver

Mounting the Camera:

1. Remove camera and hardware from the box.

*NOTE : MegaView™ v1 is available in two versions, DN and IR, shown in **image 2**. Both versions have motorized day night switcher but only IR version supports an IR LED ring.*



IR version

Image 2

DN version

2. Use the Mounting Template to prepare the mounting provisions for camera installation.
3. Use the security L-key to adjust MegaView™ v1 bracket to appropriate position. (**Image 3**)



Image 3

CAUTION: Only adjust the screws with an arrow pointing to them on the bracket base and camera body (**Image 4**)

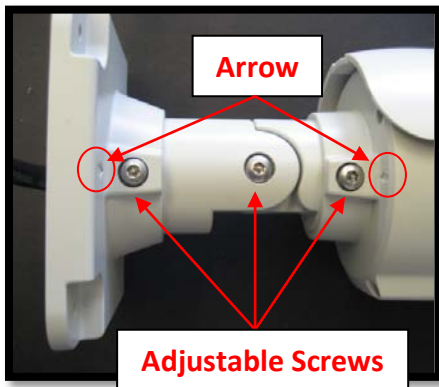


Image 4

NOTE : Bracket screws are all security screws that are tamper-resistant.

NOTE : Bracket with 3 axes enables easy installation in any location, including 360° camera body rotation, 90° tilt, 360° bracket rotation. (**image 5**)



Image 5

4. Align the holes in the camera with the prepared holes on the mounting surface. Attach the camera to the mounting surface with the wood screws or any other hardware that fits the mounting application. (**image 6**)

NOTE: Use junction box adapter, SV-JBA, to ensure a water tight installation as shown in Page 5. Use of silicon does not guarantee a water resistant install.



Image 6

5. Plug Ethernet cable into the MegaView™ v1 PoE Female RJ45 connector. (**Image 7**)

NOTE: MegaView™ v1 is a total PoE class 3 solution to power the camera, IR illuminator and fan.

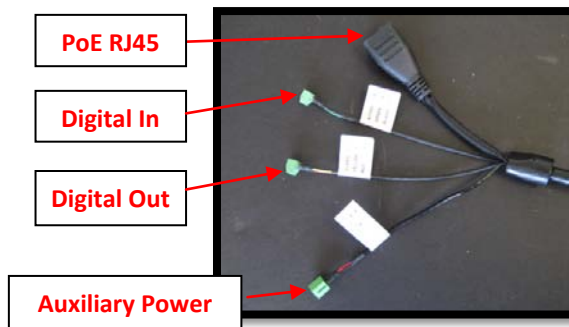


Image 7

Optional: Connecting External Power for Camera, IR Illuminator and Fan.

6. To use the external power, 12-48VDC or 24VAC, to power on camera, IR illuminator and fan, connect external power with pigtail cable connector **(Image 7)**

NOTE: MegaView™ v1 cameras contain fan which is always on.

Optional: Connecting Digital I/O:

7. To use digital I/O, connect digital I/O with pigtail cable connector. **(Image 7)**

NOTE: MegaView™ v1 DN version supports both digital input and output; IR version only supports digital input.

NOTE: Table 1 shows electrical characteristics and Table 2 shows cable color for digital in and out.

Electrical Characteristics:		Min	Max	Camera
Input voltage (V) (measured between + and – terminals)	ON	2.9	6.3	IR & DN Versions
	OFF	0	1.3	
Output current (mA) (measured between + and – terminals) Applied Voltage Range: 0 - 80V	ON	-	50	DN version Only
	OFF	-	0.1	

Table 1

NOTE: Both the input and the output are electrically isolated from the rest of the camera’s electrical circuitry via general-purpose photo couplers. The input is additionally protected with a serial 250 Ohm resistor, and a debouncing circuit. Duration of any input signal should be at least 5 ms to comply with the requirements of the debouncing circuit.

Yellow	Digital OUT +
Red	Digital OUT –
Green	Digital IN +
Black	Digital IN -

Table 2

Adjusting the Focus, Iris and Field of View:

8. To adjust focus, iris and field of view, use security L-key to adjust external lens screws shown in **Image 8**.

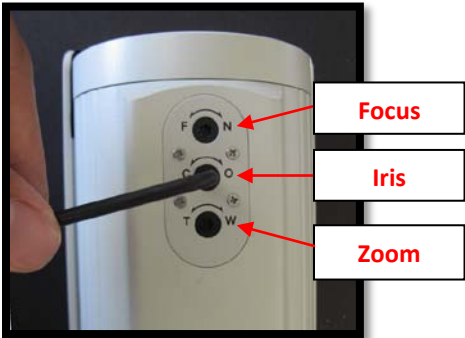


Image 8

Replacing the IR LED board:

9. Unscrew glass ring (**Image 9**)
10. Use Phillips screwdriver to remove IR LED board (**Image 10**)
11. To replace IR LED board, unplug cable and replace new IR LED board (**Image 11**)

NOTE: Only MegaView™ v1 IR version can accommodate a replacement IR LED board. IR LED Board cannot be added to DN version.

NOTE: IR LED board part number: M000094-16



Image 10



Image 9



Image 11

Important Note

Correct installation for outdoor application of MegaView™ v1

Correct Installation:

Please install the MegaView™ v1 with junction box adapter (SV-JBA) to avoid risk of water leakage in outdoor applications as shown in **Image 12**.

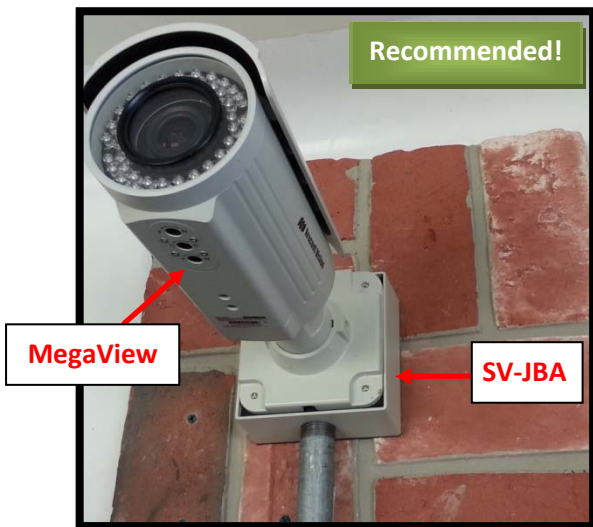


Image 12

Note: Please see how to install SV-JBA on page 6.

Incorrect Installation:

Attaching the MegaView™ v1 directly onto a wall surface may result in water leakage, see **Image 13**.



Image 13

NOTE: Water damage from improper installation is not covered by the warranty!

MegaView™v1 Junction Box Adapter (SV-JBA) Installation Instruction

Inside the box:

- A. Junction Box Adapter
- B. Pack of four (4) machine screws
- C. One double sided hex key
- D. Pack of four (4) wood screws and four (4) dry wall anchors
- E. Mounting Template

Not included but needed:

- #2 Phillips head screw driver
- ¾" NPT Conduit (if necessary)

NOTE: SV-JBA is same unit used for MegaDome® 2 wall mount and SurroundVideo® wall mount

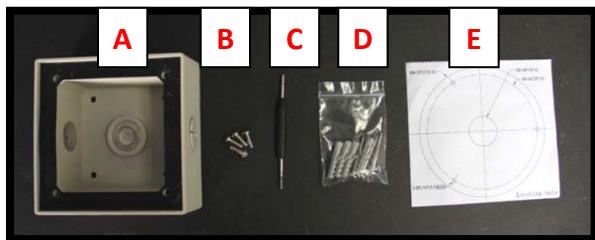


Image 14

1. Remove Junction Box and hardware from the box
2. Remove the conduit plug by first removing the socket set screw using one of provided hex keys shown in **Image 15**
3. Attach Junction Box Adapter to the wall using drywall screws or any optional

hardware suitable for the mounting surface.

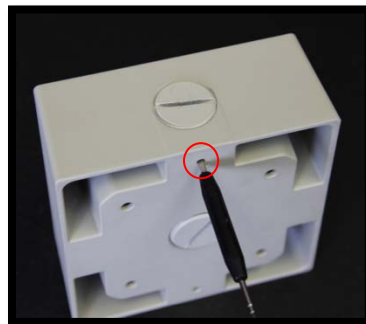


Image 15



Image 16

4. Connect ¾" NPT Conduit to Junction Box Adapter shown in **Image 16**.
5. Run Ethernet Cable and outside power cable (if necessary) through the Junction Box Adapter and connect to Megaview™ v1 pigtail cable.
6. Attach Megaview™ v1 to Junction Box Adapter as shown in **Image 16**.

MegaView™v1 Electrical Box Adapter (SV-EBA) Installation Instructions

Inside the box:

- A. Electrical Box Adapter
- B. Pack of four (4) machine screws

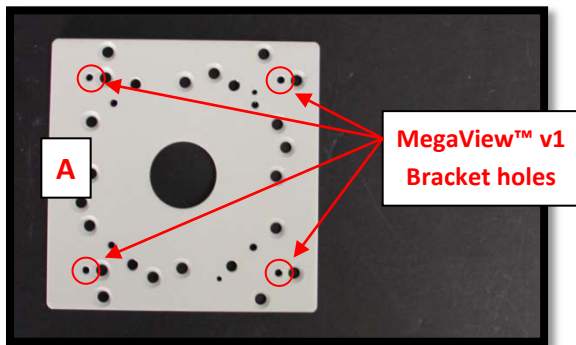


Image 17

Not included but needed:

- #2 Phillips head screw driver
- Common Electrical Box, such as single gang box, double gang box, or square electrical boxes shown in **Image 18-1~4**.

NOTE: SV-EBA also works with MD-WMT2, SV-WMT and D4S-WMT

1. Remove Electrical Box Adapter and hardware from the box.
2. Attach MegaView™ v1 bracket to Electrical Box Adapter.
3. Attach Electrical Box Adapter to Electrical Box.

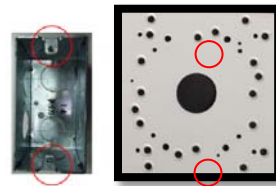


Image 18-1 Single gang box

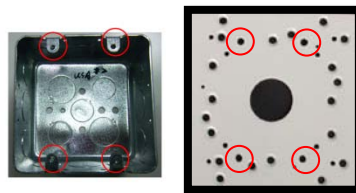


Image 18-2 Double gang box

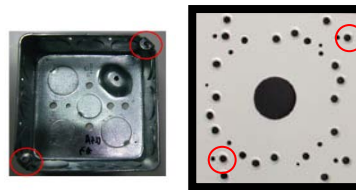


Image 18-3 Square box

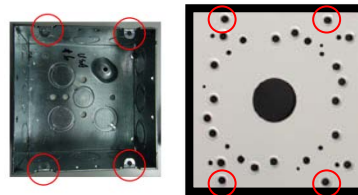


Image 16-4 Square box

MegaView™v1 Pole Mount Adapter (MD-PMA) Installation Instructions

Inside the box:

- A. Pole Mount Adapter
- B. 2x Compression Fittings
- C. 2x Small Steel Straps
- D. 2x Large Steel Straps
- E. Pack of four (4) machine screws

Not included but needed:

- #2 Phillips head screw driver

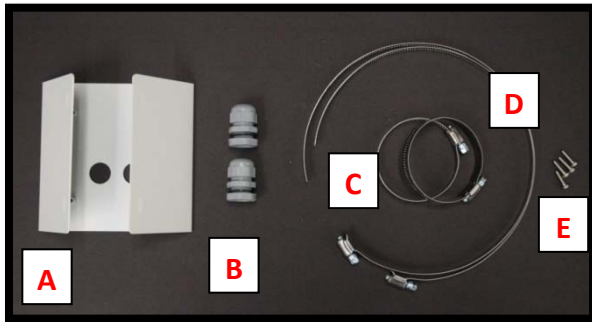


Image 19

NOTE: MD-PMA also works with MD-WMT2, SV-WMT and D4S-WMT

1. Remove Pole Mount Adapter, steel Straps and hardware from the box.
2. Attach MegaView™ v1 bracket to Pole Mount Adapter as shown in **Image 20**.

3. Use the supplied two Steel Straps to attach the Pole Mount Adapter to the pole and tighten the compression screws as shown in **Image 21**.
4. To adjust MegaView™v1 bracket, please reference “**Mounting the Camera**”, if needed.

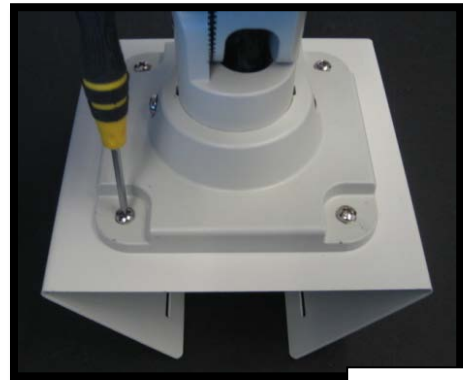


Image 20

**Compression
Screws**



Image 21

MegaView™v1 Corner Mount Adapter (MD-CRMA) Installation Instructions

Inside the box:

- A. Corner Mount Adapter
- B. 2x Compression Fittings
- C. Pack of four (4) machine screws
- D. 2x Packs of four (4) wood screws and four (4) dry wall anchors

Not included but needed:

- #2 Phillips head screw driver

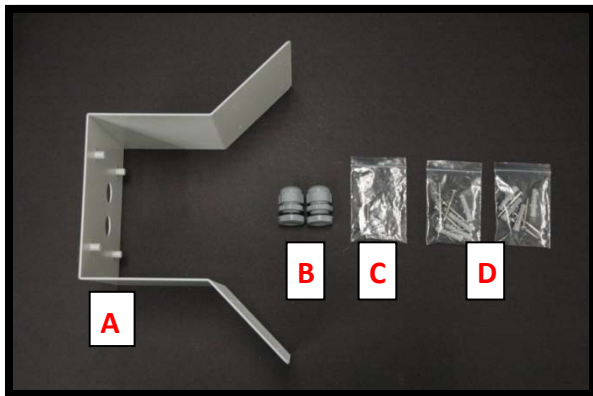


Image 22

NOTE: MD-CRMA also works with MD-WMT2, SV-WMT and D4S-WMT

1. Remove Corner Mount Adapter and hardware from the box.
2. Attach MegaView™ bracket to Corner Mount Adapter as shown in **Image 23**.

3. Using the screws provided (or other hardware) to attach the Corner Mount Adapter to an exterior 90° corner wall as shown in **Image 22**.
4. To adjust MegaView™ bracket, please reference "**Mounting the Camera**", if needed.

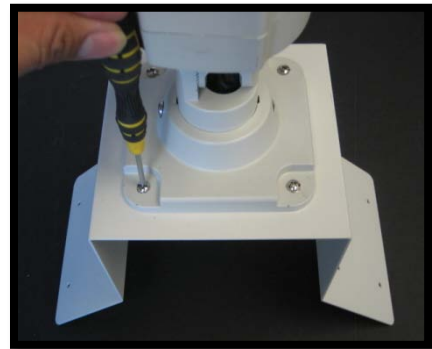


Image 23

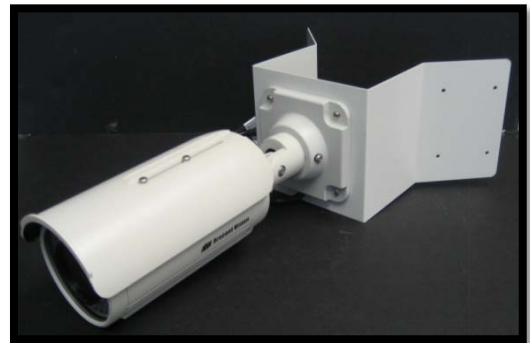


Image 24

Leading
the **way** in
Megapixel
video

Arecont Vision

425 E. Colorado Street, 7th Floor
Glendale, CA 91205
support@arecontvision.com
www.arecontvision.com
+1.818.937.0700
877.CAMERA.8

