

Evolution Outdoor Dome Camera

QUICK START GUIDE



EVO-05NMD (white base)
EVO-05NND (black base)

QUICK START GUIDE: Important

- Read these instructions carefully before installing or operating this product.
- This product should be installed by a qualified service person and the installation should conform to local and national regulations.
- This product is not suitable for installation in a ceiling void that is also used as an air handling space.
- For the latest updates of all user manuals, guides and for the latest camera firmware versions, please look at www.oncamgrandeye.com/security-systems/

Sensor	5 Megapixel sensor	Ports	RJ45 / 2.1 jack DC / 2.5 audio
Field of view	360°	Network cable type	CAT5 or better for 100base
Angle of view	180° Hemisphere	DIP switch options	#1(N/A); #2 NTSC (on) / PAL (off)
Min Illumination	0.2 Lux	Power	12VDC (min 1Amp) / POE
Frame rate	10 fps @ 4MP / 15 fps @ ≤ 2MP	Power consumption	8W max
Video Codec	Supports MJPEG / H.264	Operating temperature	-40 to 55°C (-40 to 135°F)
External in/out	1 contact input / 1 contact output	Storage temperature	-40 to 70°C (-40 to 158°F)
Security	Multi-level access with passwords	Water ingress protection	IP66 Rated
Users	Multiple users, 20 simultaneous	Weight	0.92kg (2.03lbs)

Approvals : IEEE802.3af Class 2; EMC: CISPR Class A, FCC; CE, ICES-003; UL60950

Copyright 2014 by Oncam Global Group AG. Oncam Grandeye is a trading name of Oncam Global Group AG. All rights reserved. All screen images are simulated. Specifications and configurations subject to change without notice. Legal Notice: Parts of this product are protected by patents.

C3973M New 1-10-14

Welcome

The Oncam Grandeye Evolution Outdoor 360° IP camera is designed to be connected to an IP network, and it can be configured and operated using standard internet browser software. This quick start guide describes the installation and configuration procedures for a standard surface mount camera application.

Technical Support

Oncam Grandeye Evolution IP Camera Installation and Operation Guide (<http://www.oncamgrandeye.com/security-systems/outdoor-camera/>)

Tel: +1 (559) 292-1981 (International)
Email: techsupport@pelco.com

1 Note the MAC address

Make a note of the camera's location and unique MAC address, which can be found printed on the two camera labels. This information may be needed during camera configuration.

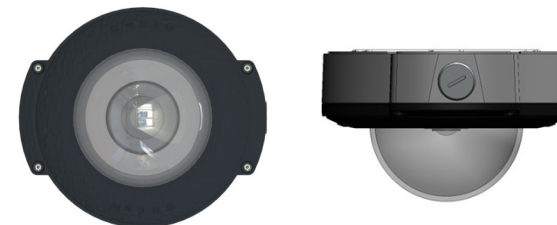


2

Mounting options

The Evolution Outdoor Dome camera is intended for mounting on flat surfaces, such as walls or ceilings. Cabling can be configured to enter the camera from the side or from within the mounting surface through the rear of the mounting base. The latter option is recommended where possible to offer improved vandal and tamper resistance.

Note: This product is not suitable for installation in a void that is also used as an air-handling space.



3

Making connections

PoE/Network Connection

The camera should be connected to the network using CAT5 or better cable fitted with a RJ45 connector.

Power Supply Options

The camera module requires an external supply power to operate. This can be provided in one of two ways:

1. **Power-over-Ethernet (PoE):** Connect the Ethernet cable to the Ethernet port. Power may be supplied to the camera via PoE IEEE802.3af through the Ethernet cable.
2. **Direct DC Input:** If PoE is not available, use a 12V DC power supply and wire the correct polarity (center positive).



Alarm Connections



Analogue Video Output: PAL (520Lines) BNC connection used for 'fish eye' spot monitor / local camera testing. To activate the BNC connection; set dip switch 2. to: On NTSC / Off PAL.

Audio Input: 3.5mm audio jack.

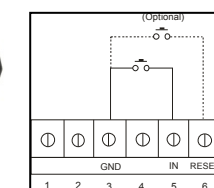
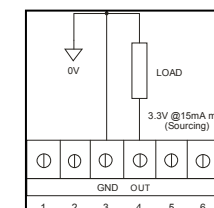
Analogue Video Output



Audio Input

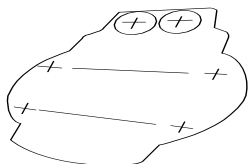


Direct DC Input



4 Preparing the surface for installation

Attach the supplied drilling template to the installation location. Drill holes appropriately-sized and use wall plugs and mounting screws. Insert anchors into the drilled holes. For concealed-cable entry use the supplied drilling template for pilot hole drilling and drill the clearance holes for cable access to the waterproof cable glands.



5 Remove the dome trim cover

Using Torx tool (provided), remove the four Torx screws and then carefully remove the plastic dome trim cover and set it aside, be careful not scratch the dome bubble.



6 Fix the camera module in the base

Secure the camera base with appropriate fixing screws. Ensure the cables are pulled through the base correctly. The camera module can then be fitted on to the base. The camera module is secured to the base by the thumb screw.



7 Re-assemble and apply power

Carefully seat the dome back on to the base, taking care not to damage the dome surface, and ensuring that the dome seal is retained correctly. Refit the dome screws with the supplied Torx driver. Remove the screen protection film from the dome.



8 Focus adjustment

The focus is pre-set at the factory so no adjustment is necessary.



9 Configuring network settings

In order to use the camera you will need to know its IP address. There are two typical installation types. The first type uses a DHCP server or router to automatically assign unique valid IP addresses to each camera. The alternative is a manually configured network using static IP addresses. If your network has a DHCP server, go to Step 11.

Static IP installation

If no DHCP server is available on the network the camera will adopt its **default IP address of 192.168.0.200**. You will need to manually assign each camera with a new, unique, IP address.

Note: There is a more detailed explanation of how to adjust IP settings in the Evolution Camera Installation and Operation Guide and the Camera Configuration Tool Guide.

10 Using the Camera Configuration Tool

The Oncam Grandeye Website, <http://www.oncamgrandeye.com/56-oncam-grandeye-configuration-tool.html> has the latest version of the camera configuration tool and User Guide available for download.

This tool quickly finds the IP and MAC addresses of all of the Oncam Grandeye IP cameras connected to the network. This software tool will also allow you to change network settings, configure the system and perform software updates on multiple cameras.

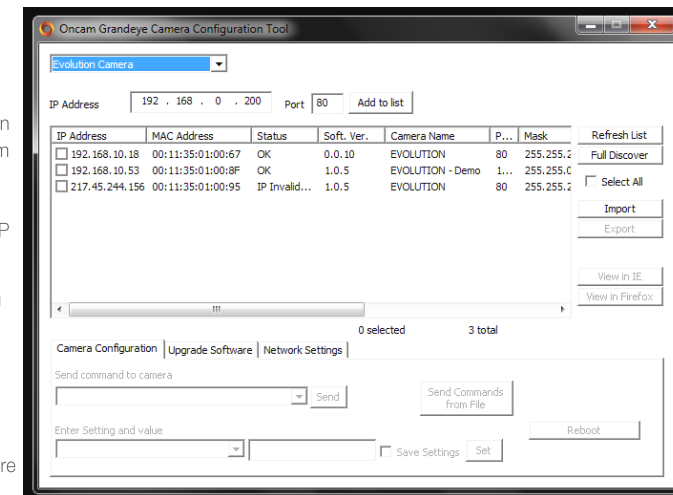
To find connected cameras follow the installation instructions provided.

Start the application by clicking the icon found on the desktop or in the Program List (under Oncam Grandeye). The software will scan the network and provide a list of all connected Oncam IP cameras.

A new scan can be initiated by clicking the Discover button.

See the 'Camera Configuration Tool User Guide' for full details of the application features.

Note: Some functions in this tool require a user name and password to be entered: this is 'admin' for both.



11 Viewing images for the first time

To view live images from any camera on the network:

1. Enter the IP address of the camera into the address bar of the browser running on a PC on the same network. To access the Web interface, open a browser window (Internet Explorer or Firefox) and enter the IP address of the camera. (e.g. <http://192.168.0.200>)

2. Enter the User name and Password
(both "admin" by default).

