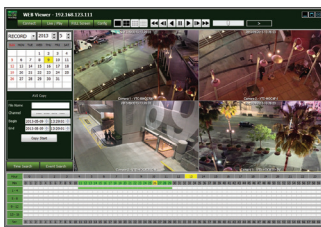




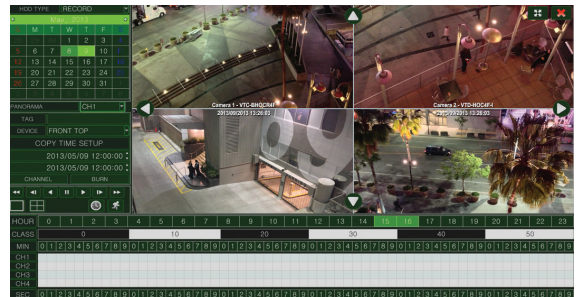
HD-SDI or High Definition Serial Digital Interface is a technology borrowed from the broadcast industry. The format SMPTE 292M has now been adopted across the Closed Circuit Video Industry and is brought to you by VITEK in an Economical and feature abundant way.

## FEATURES

- 4 CH HD-SDI Inputs with Full 1080p Camera Support
- Simple plug and play, point-to-point connection from camera to DVR
- 120fps Live Display Speed at 720p/1080p / up to 120 fps Recording & Playback at 720p (60fps at 1080p)
- HDMI, VGA, and Spot BNC Outputs
- 2 Internal SATA2/SATA3 HDD Slots supporting up to 8TB (2 x 4TB HDD) using Advanced HDD Format
- External SATA Port (eSATA)
- Add 4 Analog SD Cameras (per HD input) with optional VT-QHD4
- Alarm In/Out
- Remote Viewing via CMS Software, Web Browser, and Mobile Phones (iOS/Android)
- Pentaplex Operation (Playback, Recording, Backup, Network)
- 4 Channel Audio In
- 16 x 12 Motion Detection Grid
- Thumbnail Search
- Linear digital zoom for live and playback
- Embedded Web Server for Remote Setup & Viewing
- Up to 8 Simultaneous Network/Remote Connections
- 64 Camera Remote Viewing via CMS Software
- RS485 Communication port



Remote Viewing with Internet Explorer and Apps Available for iPhone, iPad, & Android Devices



Local Management & Viewing Interface



Rear Connections



Optional 4 Channel Analog Interface (VT-QHD4)



## Detailed Specifications

Video Input / Resolution	4 CH HD-SDI Inputs
Main Monitor Output	1 HDMI / 1 Spot BNC / 1 VGA (up to 1920x1080)
Audio In/Out	4 line in (RCA) / 1 line out (RCA) & HDMI Audio Output
Alarm In/Out	4 In / 1 Out (Relay)
Recording Compression	H.264
Recording Multi Operation	Pentaplex (Live, Playback, Recording, Backup, Network)
Recording / Playback (720p Source)	320x180 / 640x360 / 1280x720 @ 120fps
Recording / Playback (1080p Source)	480x270 / 960x540 / 1920x1080 @ 60fps
Live Display Speed (Max)	720p/1080p @ 120fps
Individual Network Streaming	20fps @ 1080p / 30fps @ 1920x540 / 60fps @ 960x540 / 60fps @ 960x270 / 120fps @ 480x270
Simultaneous Network Connections	Up to 8
Recording Mode	Continuous, Event (Motion, Alarm), Schedule
Motion Detection / Privacy Masking	16 x 12 Grid
Storage Interface	SATA2 / SATA3 (Supports Advanced HDD Formatting)
SATA HDD Inputs	2 SATA HDD Max. (2x Internal HDD OR 1x internal HDD & 5x External via eSATA)
eSATA	OPTIONAL (uses 1 internal port)
Max Supported HDD Size	Up to 4TB each using Advanced Format (Up to 8GB Internal Storage)
Data Redundancy (Mirroring / Event)	Dual Recording Mode (Individually Selectable per Camera)
External Backup	AVI Format to USB Device (HDD, Thumb Drive, etc.) & Network
System Control	USB Mouse, Included IR Controller
Network	LAN (TCP/IP Ethernet, RJ45), DHCP, Dynamic IP, DDNS, uPNP, HTTP, NTP
Ethernet Port	10M / 100M
Hybrid Camera Operation	YES with optional 4-channel breakout box (Model VT-QHD4)
Remote Viewing Software	CMS / Web Browser / Mobile (iOS/Android)
Network Streaming	CIF, HD1, D1, 960H, 1080P
Adjustable Access Levels Per User	Search & Play / Archiving / DVR Setup / PTZ Control / Power Off
Digital Zoom	Linear scale for Live & Playback
Panorama Search	YES
PTZ Tour Event Preset	YES
Sensor Triggered PTZ activation	YES
Motion Sensor Display	YES
DDNS	YES
Email Notification	YES
Power	12VDC Adapter (3A)
Operating Temperature	41 ~ 104 °F (5 ~ 40 °C) / 20 ~ 80% RH
Dimensions (W x H x D)	13.39" x 2.76" x 9.84" (340 x 70 x 250mm)
Weight	4.41 lbs. (2kg)

