



▼ Integration Capabilities

Tags:

Access Control



Event Management



Intrusion Detection



When faced with a security threat in an application where real-time response is critical, such as those seen in today's security environments, operators need a solution that provides critical data to detect and respond.

AccessXpert delivers enterprise access control in a Cloud environment that combines data from disparate platforms, merges physical and cyber security and enables operators through mobile applications and an easy-to-use web interface, so operators can respond with confidence. VideoXpert™, the video management platform designed by Pelco™ by Schneider Electric™, captures the relevant video and data to give operators situational awareness. Incorporating VideoXpert integration, AccessXpert is able to deliver high level video integration to help operators make informed decisions and more accurately assess situations.

The intuitive design and advanced configuration of VideoXpert allows easy access to data from multiple systems, all from a central location. With powerful analytics integrated into the VideoXpert platform, data is not only accessible, but also actionable, providing operators with the tools they need to make fast, effective decisions that drive their businesses forward.

Learn more at pelco.com/videoxpert

At a Glance

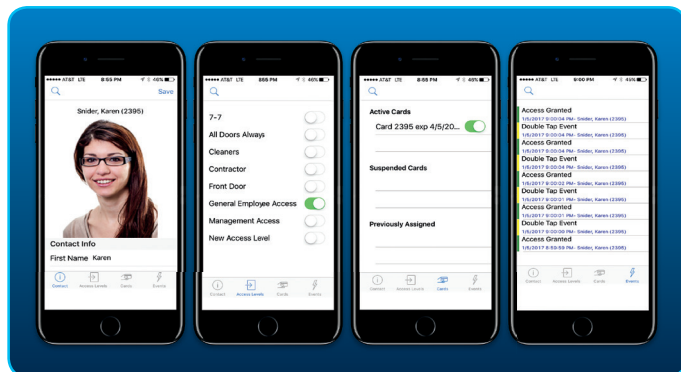
- Cloud- and software-based solution
- Access anytime, anywhere
- Secured data with two-factor authentication
- Seamless Integration
- Gain operational efficiency



by **Schneider** Electric

Choose with Confidence.

Maximum Flexibility

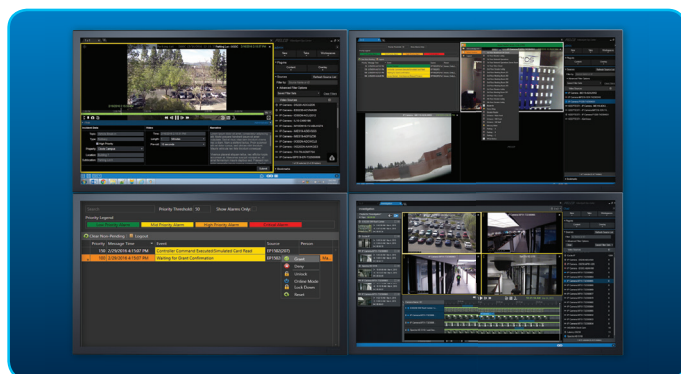


We know technology is changing on a daily basis, and you demand solutions that allow you to adapt accordingly. The integration of AccessXpert and VideoXpert deliver a level of agility that is unmatched. The cloud-based solution for access on-the-go, combined with the robust system architecture of VideoXpert, enables scalability that allows you to grow your systems, as you grow your business.

Features:

- Cloud-based solution for high availability
- Two-factor authentication and secure encryption ensures your data is safe and protected
- Mobile applications for access on the go
- Mass Messaging for quick communications
- 100% Web based management

Seamless Integration

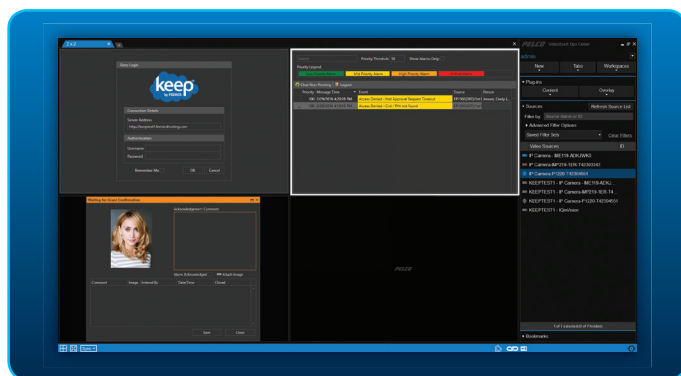


Whether you have already invested in a video management system, building automation or intrusion detection solutions, VideoXpert and AccessXpert work together to maximize the capabilities of these platforms to deliver a solution that provides you the critical data you need, when you need it.

Features:

- Reduced cost of ownership by leverage existing investments
- Cloud- and software-based solution requires minimal hardware
- Integrate to other security platforms with ease as your business needs expand
- Leverage wireless locks to reduce installation costs

Operational Efficiency



Model: OCCPLUGAXPERT

The intuitive user interfaces of both AccessXpert and VideoXpert provide the optimal user experience. Gone are the days of lengthy training on disparate platforms. The combined solution delivers an easy-to-use interface, so you can make quick, effective decisions. Accessible within the VideoXpert platform, real-time alerts delivered by the AccessXpert are exposed instantly, unify operational and security data over system video.

Features:

- Intuitive user interface reduces operator downtime
- Real-time alerts enable fast, reliable, decision making
- Robust search capabilities to quickly locate the information you need
- Unified operational and security data



About Schneider Electric™

Schneider Electric is the global leader in sustainable energy management and industrial automation. Schneider Electric's expertise in energy management, automation, software and services allows integration and connection to operational technologies in ways not possible just a few years ago.

To learn more, visit schneider-electric.us/accessxpert



Contact the sales representative in your area today, or visit pelco.com/videoexpert to learn more.

VideoXpert and AccessXpert users must meet system and eligibility requirements to utilize the driver and/or plug-in.