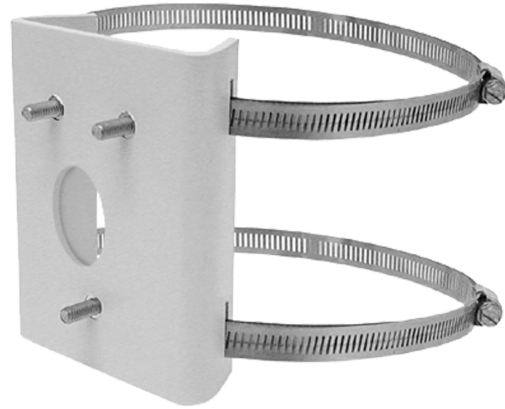


PA101 Pole Mount Adapter

POLE MOUNT ADAPTER, LIGHT DUTY

Product Features

- Indoor and Outdoor Installations Supported
- For Use with WMVE-SR, EM16, EM14, CM1450, EM1400, EM1450, PM14, and MM1000 Mounts
- Mounts to 7.62 cm (3 in.) to 20.32 cm (8 in.) Diameter Poles
- Durable Aluminum and Stainless Steel Construction



The PA101 pole mount adapter is designed to support standard wall mounts enabling the installation of CCTV equipment on a pole.

The PA101 pole mount adapter is supplied with stainless steel straps to fasten the adapter to a pole. Stainless steel hardware also is provided for attaching a wall mount to the adapter. Lightweight, rugged, and easy to install, the pole mount adapter is constructed of aluminum and has a gray polyester powder coat finish.

PELCO

by Schneider Electric

International Standards
Organization Registered Firm;
ISO 9001 Quality System



C284 / REVISED 2-16-15

MODEL

PA101

Pole mount adapter

MECHANICAL

Pole Mount Method

Attach WMVE-SR, EM16, EM14, CM1450, EM1400, EM1450, PM14, and MM1000 mounts using the supplied adapter bolts

Cable Entry

Through the 2.5 cm (1 in.) conduit access opening.

GENERAL

Construction

Aluminum Finish

Finish

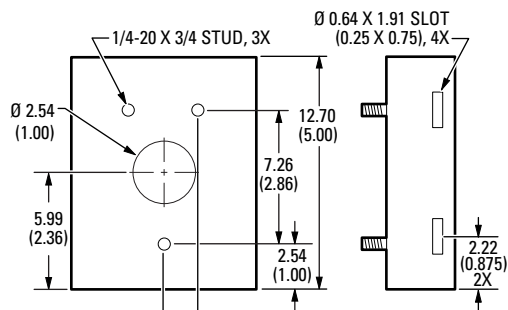
Gray polyester powder coat

Unit Weight

0.9 lb (0.4 kg)



VALUES IN PARENTHESES ARE INCHES; ALL OTHERS ARE CENTIMETERS.
DRAWINGS AND DIMENSIONS NOT TO SCALE.



▲ **WARNING:** Cancer and Reproductive Harm - www.P65Warnings.ca.gov.

▲ **ADVERTENCIA:** Cáncer y Daño Reproductivo - www.P65Warnings.ca.gov.

▲ **AVERTISSEMENT:** Cancer et Troubles de l'appareil reproducteur - www.P65Warnings.ca.gov.

Pelco by Schneider Electric

3500 Pelco Way, Clovis, California 93612-5699 United States

USA & Canada Tel (800) 289-9100 Fax (800) 289-9150

International Tel +1 (559) 292-1981 Fax +1 (559) 348-1120

www.pelco.com www.pelco.com/community

Pelco, the Pelco logo, and other trademarks associated with Pelco products referred to in this publication are trademarks of Pelco, Inc. or its affiliates. ONVIF and the ONVIF logo are trademarks of ONVIF Inc. All other product names and services are the property of their respective companies.

Product specifications and availability are subject to change without notice.
©Copyright 2015, Pelco, Inc. All rights reserved.