



6101W

## PLANUX WHITE MONITOR



Colour monitor with 3.5" On-Screen Display. With touch-sensitive technology and full-duplex hands-free function. Audio volume, call volume, colour, brightness and contrast adjustment. Ringtones can be customised, selecting from the 7 melodies provided. Backlit control panel consisting of: 1 key button, 1 enable/disable audio button, 1 privacy or doctor function button which can be selected via the menu (with red LED to indicate privacy enabled), 1 self-ignition button, 2 buttons for various uses and 4 buttons for entry, confirmation and navigation within the menus. The monitor, used in conjunction with art. 6112, can be converted into the desk version. Dimensions 145x145x33 mm.



## 6101W

# PLANUX WHITE MONITOR

### MAIN FEATURES

Audio/video system:	Yes
Flush-mounted:	Yes
Wall-mounted:	Yes
Desk base-mounted:	Yes
Hands-free function:	Yes
Type of display:	LCD
Display size (inch):	3,5
OSD display:	Yes
Display resolution (HxV - pixel):	320x240
B/W or colour display:	
Colour:	White RAL9016
Sensitive Touch technology:	Yes
Total buttons:	10
Additional buttons:	1
Backlighting colour:	Blue led

### FUNCTIONS

Self-ignition:	Yes
Privacy function:	Yes
Privacy conversation function:	Yes
Key button function:	Yes

### HARDWARE SPECIFICATIONS

Customisable housing:	Yes
-----------------------	-----

### SETTINGS

Loudspeaker volume control:	Yes
Microphone volume control:	Yes
Ringtone volume control:	Yes
Display brightness control:	Yes
Display contrast control:	Yes
Display colour control:	Yes

### GENERAL DATA

Height (mm):	145
Width (mm):	145
Depth (mm):	33



**6101W**

## PLANUX WHITE MONITOR

### COMPATIBILITY

Simplebus Top audio/video system:	Yes
-----------------------------------	-----

### TECHNICAL CHARACTERISTICS

Maximum current absorption (mA):	200
Operating temperature (°C):	-5 ÷ 40



6101W

## PLANUX WHITE MONITOR

### ACCESSORIES



**6101C**

PLANUX BROWN COVER

Planux template with two buttons - Templates Prestige - Wengé



**6101D**

PLANUX GREEN COVER

Planux template with two buttons - Templates Prestige - Green Valley



**6101E**

MOTHER OF PEARL FACEPLATE ACCESSORY FOR PLANUX MONITOR

Planux template with two buttons - Templates Prestige - Madre Perla



**6101F**

PLANUX VIOLET COVER

Planux template with two buttons - Templates Trendy - Rock Violet



**6101G**

PLANUX ORANGE COVER

Planux template with two buttons - Templates Trendy - Orange Sunshine



**6101H**

PLANUX RED COVER

Planux template with two buttons - Templates Trendy - Royal Red



## 6101W

# PLANUX WHITE MONITOR

## ACCESSORIES



**6101I**

PLANUX BLUE COVER

Planux template with two buttons - Templates Trendy - Blue Sky



**6101J**

PLANUX GOLDEN COVER

Planux template with two buttons - Templates Prestige - Gold



**6101L**

PLANUX WHITE COVER

Planux template with two buttons - Templates Classic - White



**6101N**

PLANUX BLACK COVER

Planux template with two buttons Templates Classic - Black



**6112**

PLANUX DESK BASE - 8 WIRES

Desk base allowing the Planux monitor to be converted for desk use, complete with two 2 m RJ45 headed cables: one for connection to the VIP network, the other to connect the extra terminals to the junction box.  
Dimensions: 145 x 190 x 120 mm



**6114C**

PLANUX SIMPLEBUS BACKPLATE

Bracket for Simplebus Color required for the Planux monitor. The video door entry system is complete conversation privacy as standard. Handles local floor calls and call repetition as standard. Dimensions: 96X106X17 mm. From the RI15 it is compatible with all SBTOP functions and products. Allows transmission of alarm signals to the porter switchboard, separate call to main switchboard, secondary switchboard and guardian dooreentry phone. Allows direct intercommunication between users without the aid of an interface or porter switchboard and the use of several actuators relays, pushbuttons programming by OSD.



**6101W**

## PLANUX WHITE MONITOR

### ACCESSORIES



**6114KC**

**PLANUX KIT BACKPLATE**

The video door entry system is complete conversation privacy as standard. Handles local floor calls and call repetition as standard. Dimensions: 96X106X17 mm.



**6117**

**PLANUX, SMART, ICONA FLUSH BACKBOX**

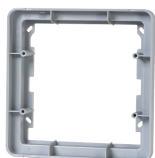
Flush mounted box for Planux, Smart and Icona monitors Dimensions: 132x132x50mm



**6118**

**PLANUX, SMART, ICONA CLIPS FOR DRY LINED WALLS**

Installation kit for plasterboard walls for Planux, Smart and Icona monitors.



**6120**

**PLANUX SURFACE BACKBOX**

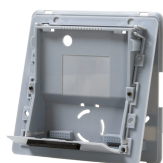
Short surface support for Planux monitor for use with tilt facility art 6122 Accessory art.6122 cannot be used for tilting. Dimensions: 145 x 145 x 26 mm



**6121**

**PLANUX SURFACE BACKBOX**

Long support for Planux monitor wall mounting Accessory art. 6122 can be used for tilting. Dimensions: 145 x 145 x 45 mm



**6122**

**PLANUX TILT ACCESSORY**

Accessory for tilting Planux monitors to be used in combination with the long support art.6121 and the flush-mounted box art. 6117. Dimensions: 136 x 136 x 40 mm



**6101W**

## PLANUX WHITE MONITOR

### ACCESSORIES



**6214C**

SIMPLEBUS COLOR BRACKET FOR PLANUX MEMO AND PLANUX MANAGER

Bracket for Simplebus Color system, required for the Planux Memovideo or Planux Manager monitors. Manages door call function and call repetition as standard. Dimensions: 96x106x17mm. Fitted with branch terminal art. 1214/2C