

advidia



A-300 Speed Dome

Quick Start Guide

Thank you for purchasing our product. If there are any questions, or requests, please do not hesitate to contact the company you purchased the unit from.

This manual applies to the Advidia IR speed dome.

DISCLAIMER STATEMENT

“Underwriters Laboratories Inc. (“UL”) has not tested the performance or reliability of the security or signaling aspects of this product. UL has only tested for fire, shock or casualty hazards as outlined in UL’s Standard(s) for Safety, UL60950-1. UL Certification does not cover the performance or reliability of the security or signaling aspects of this product. UL MAKES NO REPRESENTATIONS, WARRANTIES OR CERTIFICATIONS WHATSOEVER REGARDING THE PERFORMANCE OR RELIABILITY OF ANY SECURITY OR SIGNALING RELATED FUNCTIONS OF THIS PRODUCT.”

Regulatory Information

FCC Information

FCC compliance: This equipment has been tested and found to comply with the limits for a digital device, pursuant to part 15 of the FCC Rules. These limits are designed to provide reasonable protection against harmful interference when the equipment is operated in a commercial environment. This equipment generates, uses, and can radiate radio frequency energy and, if not installed and used in accordance with the instruction manual, may cause harmful interference to radio communications. Operation of this equipment in a residential area is likely to cause harmful interference in which case the user will be required to correct the interference at his or her own expense.

FCC Conditions

This device complies with part 15 of the FCC Rules. Operation is subject to the following two conditions:

1. This device may not cause harmful interference.
2. This device must accept any interference received, including interference that may cause undesired operation.

EU Conformity Statement



This product and - if applicable - the supplied accessories too are marked with "CE" and comply therefore with the applicable harmonized European standards listed under the Low Voltage Directive 2006/95/EC, the EMC Directive 2004/108/EC, the RoHS

Directive 2011/65/EU..



012/19/EU (WEEE directive): Products marked with this symbol cannot be disposed of as unsorted municipal waste in the European Union. For proper recycling, return this product to your local supplier upon the purchase of equivalent new equipment, or dispose of it at designated collection points. For more information see: www.recyclethis.info.



2006/66/EC (battery directive): This product contains a battery that cannot be disposed of as unsorted municipal waste in the European Union. See the product documentation for specific battery information. The battery is marked with this symbol, which may include lettering to indicate cadmium (Cd), lead (Pb), or mercury (Hg). For proper recycling, return the battery to your supplier or to a designated collection point.

For more information see: www.recyclethis.info.



Safety Instruction

These instructions are intended to ensure that user can use the product correctly to avoid danger or property loss.

The precaution measure is divided into **Warnings** and **Cautions**:

Warnings: Neglecting any of the warnings may cause serious injury or death.

Cautions: Neglecting any of the cautions may cause injury or equipment damage.

	
Warnings Follow these safeguards to prevent serious injury or death.	Cautions Follow these precautions to prevent potential injury or material damage.



Warnings

- All the electronic operation should be strictly compliance with the electrical safety regulations, fire prevention regulations and other related regulations in your local region.
- Please use the power adapter, which is provided by normal company. The standard of the power adapter is 24VAC \pm 10% or 12VDC \pm 10% (depending on models). The power consumption cannot be less than the required value.
- Do not connect several devices to one power adapter as adapter overload may cause over-heat or fire hazard.
- Please make sure that the power has been disconnected before you wire, install or dismantle the speed dome.
- When the product is installed on wall or ceiling, the device shall be firmly fixed.
- If smoke, odors or noise rise from the device, turn off the power at once and unplug the power cable, and then please contact the service center.
- If the product does not work properly, please contact your dealer or the nearest service center. Never attempt to disassemble the speed dome yourself. (We shall not assume any responsibility for problems caused by unauthorized repair or maintenance.)



Cautions

- Do not drop the dome or subject it to physical shock, and do not expose it to high electromagnetism radiation. Avoid the equipment installation on vibrations surface or places subject to shock (ignorance can cause equipment damage).
- Do not place the dome in extremely hot, cold, dusty or damp locations, otherwise fire or electrical shock will occur. The operating temperature should be -30°C ~ 65°C (outdoor speed dome) and -10°C ~ 50°C (indoor speed dome).
- The dome cover for indoor use shall be kept from rain and moisture.

- Exposing the equipment to direct sun light, low ventilation or heat source such as heater or radiator is forbidden (ignorance can cause fire danger).
- Do not aim the speed dome at the sun or extra bright places. A blooming or smear may occur otherwise (which is not a malfunction however), and affecting the endurance of sensor at the same time.
- Please use the provided glove when open up the dome cover, avoid direct contact with the dome cover, because the acidic sweat of the fingers may erode the surface coating of the dome cover.
- Please use a soft and dry cloth when clean inside and outside surfaces of the dome cover, do not use alkaline detergents.
- Please keep all wrappers after unpack them for future use. In case of any failure occurred, you need to return the speed dome to the factory with the original wrapper. Transportation without the original wrapper may result in damage on the speed dome and lead to additional costs.

Table of Contents

1 Overview	6
2 Installation	6
2.1 Wall Mounting	7
3 Setting the Dome over the LAN	11
3.1 Wiring	11
3.2 Activating the Camera	17
3.2.1 Accessing via Web browser	17
3.2.2 Activation via Advidia Camera Finder Utility	17
4 Accessing via Web Browser	18

1 Overview

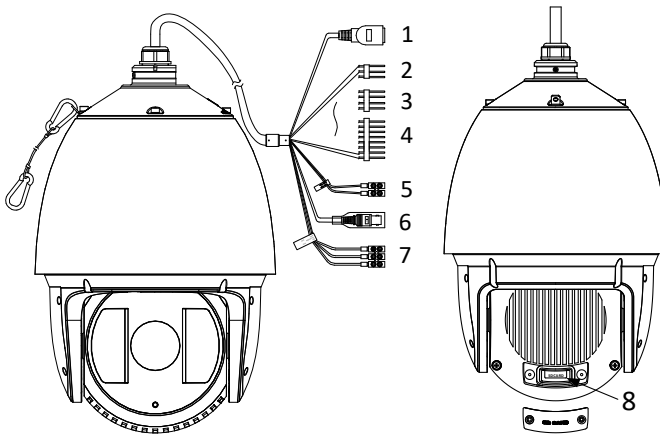


Figure 1-1 Cable Interface of the Type III Speed Dome

Table 1-1 Descriptions of Cable Interface

No.	Description
1	Network Cable
2	Audio Cable
3	Alarm Out
4	Alarm In
5	RS-485
6	Video Cable
7	Power Cable
8	SD Card Slot

2 Installation

Before you start:

Check the package contents and make sure that the device in the package is in good condition and all the assembly parts are included.

Note: Do not drag the speed dome with its waterproof cables as shown in Figure 2-1, otherwise the waterproof performance is affected.

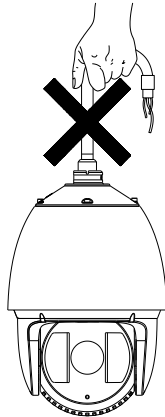


Figure 2-1 Do Not Drag the Cables

2.1 Wall Mounting

Steps:

1. Remove the protective sticker as shown in Figure 2-2

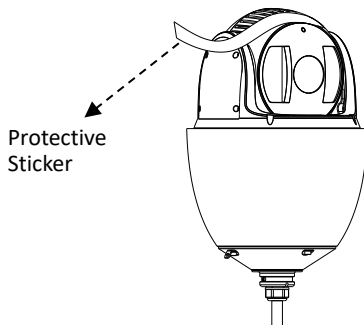


Figure 2-2 Protective Sticker

2. Remove the cover on the back of the speed dome as shown in **Error! Reference source not found.**. Insert the SD card to the SD card slot and install the cover back.

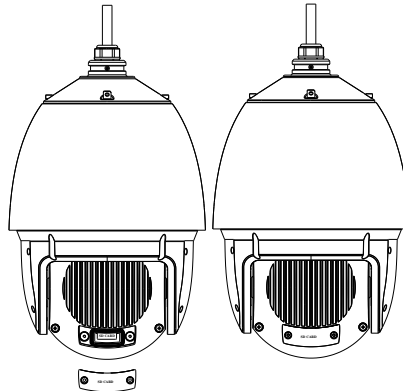


Figure 2-3 SD Card Slot

3. Drill 4 screw holes in the wall according to the holes of the bracket, and then insert M8 expansion screws into the mounting holes.
4. Attach the gasket then bracket to the wall by aligning the 4 screw holes of the bracket with expansion screws on the wall.
5. Secure the bracket with 4 hex nuts and washers.

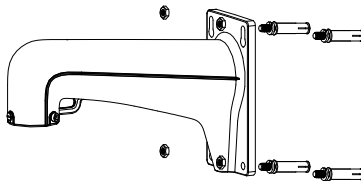


Figure 2-4 Secure the Bracket

6. Hook the two ends of the safety rope to the back box of the speed dome and the bracket respectively. Route the cables through the bracket as shown follows.

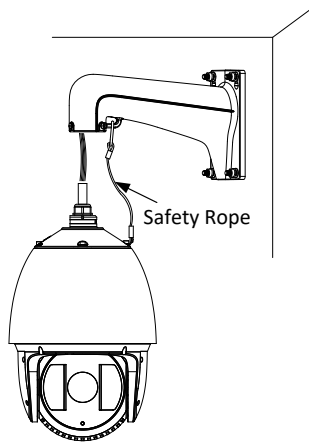


Figure 2-5 Install the Safety Rope

7. Loosen the lock screws on the bracket.
8. Align the speed dome with bracket and rotate it counterclockwise or clockwise to the bracket tightly as shown below

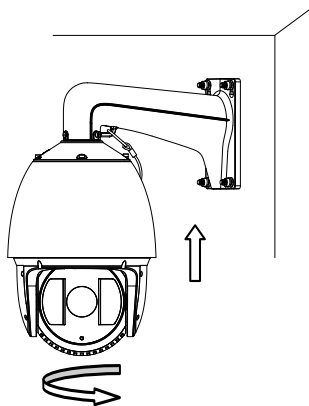


Figure 2-6 Install the Speed dome

9. Use L-wrench to tighten the lock screws to secure the speed dome and the bracket.

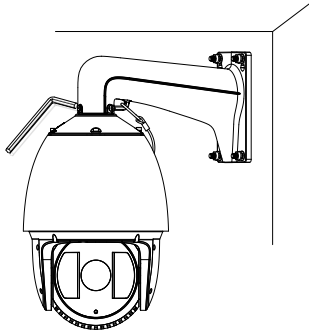


Figure 2-7 Secure the Speed dome

10. Use L-wrench to tighten the lock screws to secure the speed dome and the bracket.

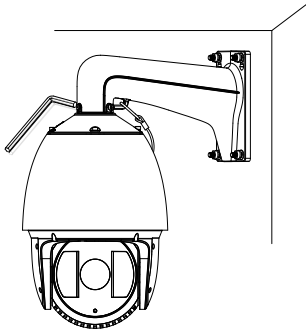


Figure 2-8 Secure the Speed dome

11. Remove the protective film of the IR or laser light after you finish installing.

3 Setting the Dome over the LAN

To view and configure the speed dome via LAN (Local Area Network), you need to connect the network speed dome in the same subnet with your PC. Then, install the Advidia Camera Finder Utility to search and change the IP address of the camera.

3.1 Wiring

The following figure shows the cable connection of network speed dome.

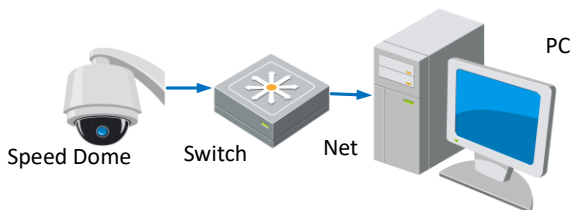


Figure 3-1 Wiring over LAN

3.2 Activating the Camera

You are required to activate the camera first by setting a strong password for it before you can use the camera.

Activation via Web Browser and via Advidia Camera Finder Utility are both supported. We will take activation via Advidia Camera Finder Utility and Activation via Web Browser as examples to introduce the camera activation.

3.2.1 Accessing via Web browser

Steps:

1. Power on the camera, and connect the camera to the network.
2. Input the IP address into the address bar of the web browser, and click Enter to enter the activation interface.

Notes:

- The default IP address of the camera is 192.0.0.64.

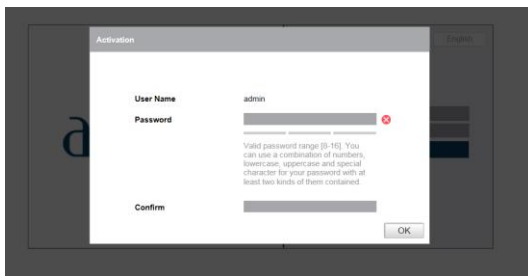


Figure 3-2 Activation Interface(Web)

3. Create a password and input the password into the password field.



STRONG PASSWORD RECOMMENDED— We highly recommend you create a strong password of your own choosing (using a minimum of 8 characters, including upper case letters, lower case letters, numbers, and special characters) in order to increase the security of your product. And we recommend you reset your password regularly, especially in the high security system, resetting the password monthly or weekly can better protect your product.

4. Confirm the password.
5. Click **OK** to save the password and enter the live view interface.

3.2.2 Activation via Advidia Camera Finder Utility

Advidia Camera Finder Utility is used for detecting the online device, activating the camera, and resetting the password.

Advidia A-300 IR Speed Dome Quick Start Guide

Get the Advidia Camera Finder Utility from the supplied disk or the official website, and install the software according to the prompts. Follow the steps to activate the camera.

Steps:

1. Run the Advidia Camera Finder Utility to search the online devices.
Check the device status from the device list, and select the inactive device.

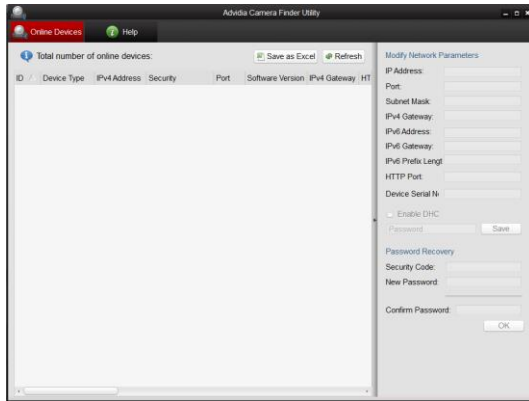


Figure 3-3 Advidia Camera Finder Utility Interface

Note:

The Advidia Camera Finder Utility supports activating the camera in batch.

2. Create a password and input the password in the password field, and confirm the password.
3. Click **OK** to save the password.

You can check whether the activation is completed on the popup window. If activation failed, please make sure that the password meets the requirement and try again.

Notes:

For additional instruction on using the Advidia Camera Finder reference the Advidia Camera Finder user guide: <http://advidia.com/documentation/AdvidiaCameraFinder.pdf>

4 Accessing via Web Browser

System Requirement:

Operating System: Microsoft Windows XP SP1 and above version
CPU: 2.0 GHz or higher

RAM: 1G or higher

Display: 1024×768 resolution or higher

Web Browser: Internet Explorer 8.0 and above version, Apple Safari 5.0.2 and above version, Mozilla Firefox 5.0 and above version and Google Chrome 18 and above version

Steps:

1. Open the web browser.
2. In the browser address bar, input the IP address of the network camera, and press the **Enter** key to enter the login interface.

Note:

- The default IP address is 192.0.0.64.
 - If the camera is not activated, please activate the camera first according to Chapter 3.2.
3. Input the user name and password.
The admin user should configure the device accounts and user/operator permissions properly. Delete the unnecessary accounts and user/operator permissions.

Note:

The device IP address gets locked if the admin user performs 7 failed password attempts (5 attempts for the user/operator)

4. Click **Login**.



Figure 4-1 Login Interface

5. Install the plug-in before viewing the live video and managing the camera. Please follow the installation prompts to install the plug-in.

Note:

You may have to close the web browser to finish the installation of the plug-in.

Advitia A-300 IR Speed Dome Quick Start Guide

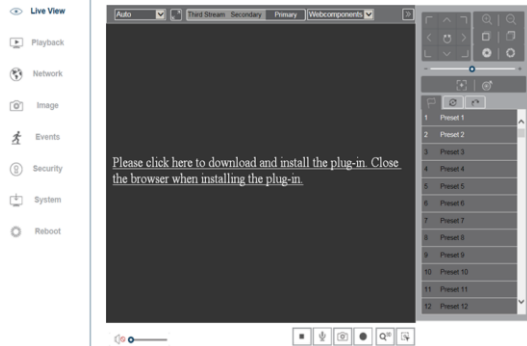


Figure 4-2 Download Plug-in

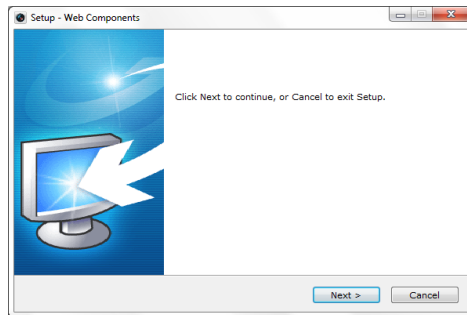


Figure 4-3 Download Plug-in(1)

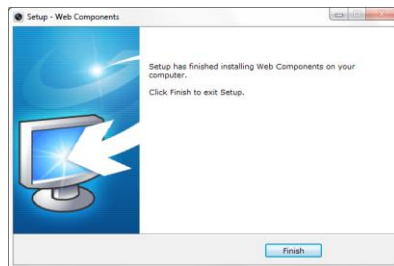


Figure 4-4 Download Plug-in(2)

6. Reopen the web browser after the installation of the plug-in and repeat steps 2~4 to login.

Note:

For detailed instructions of further configuration, please refer to the user manual of network camera