

H.264 • Weather-proof • Day & Night

NETWORK CAMERA

Quick Installation Guide

English | 繁體中文 | 簡體中文 | 日本語 | Français | Español | Deutsch | Português | Italiano | Türkçe | Polski | Русский | Česky | Svenska | العربية



This guide describes the basic functions of IP8331.
All detailed information is described in the user's manual.

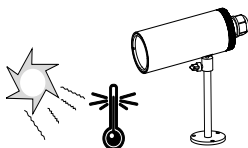


Warning Before Installation

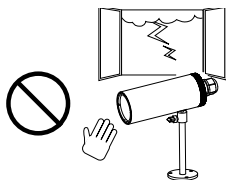
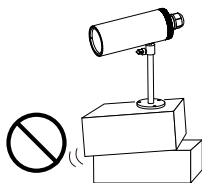
- **Power off the Network Camera as soon as smoke or unusual odors are detected.**
- **Refer to your user's manual for the operating temperature.**



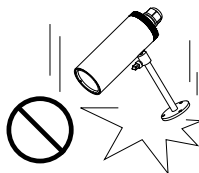
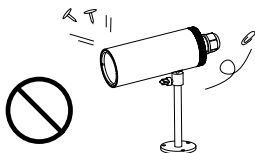
Contact your distributor in the event of occurrence.



- **Do not place the Network Camera on unsteady surfaces.**
- **Do not touch the Network Camera during a lightning storm.**



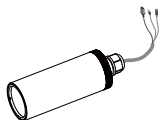
- **Do not insert sharp or tiny objects into the Network Camera.**
- **Do not drop the Network Camera.**



1

Package Contents

● IP8331



● Waterproof Connector (3 Holes, for Backup Use)



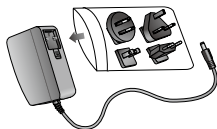
● Moisture Absorber



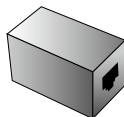
● Camera Stand



● Power Adapter



● RJ45 Female/Female Coupler



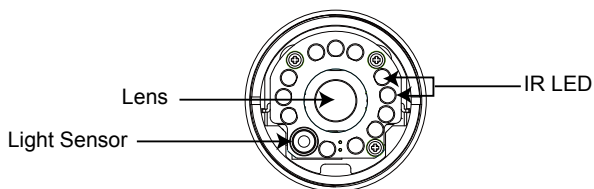
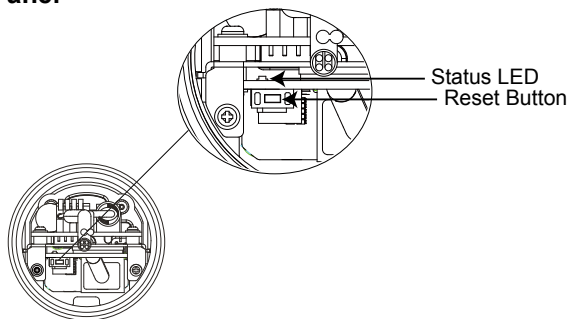
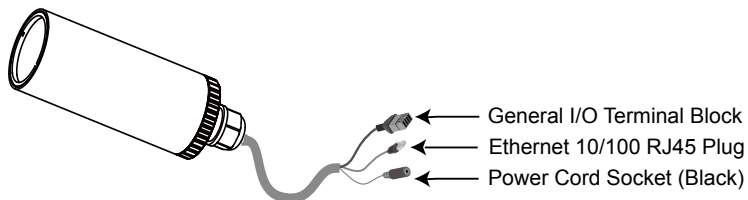
● Quick Installation Guide / Warranty Card



● Software CD



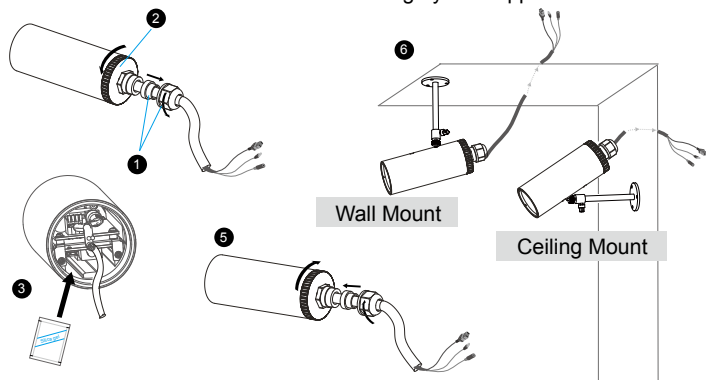
2

Physical Description**Front Panel****Back Panel****Connectors**

3

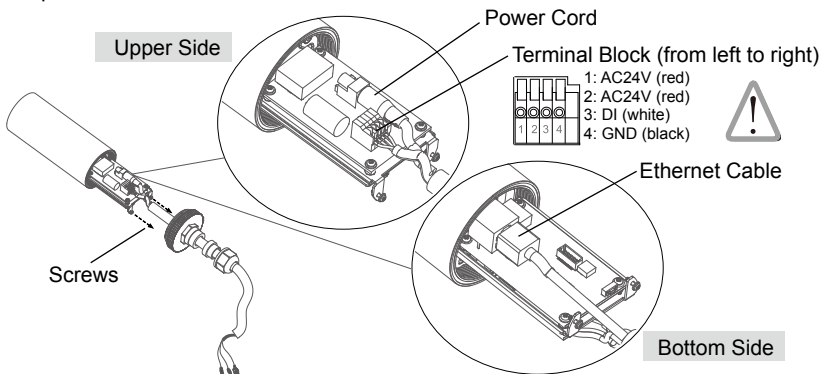
Hardware Installation

1. Loosen the waterproof connector, and then remove the rubber.
2. Loosen the back cover.
3. Tear down the aluminum foil vacuum bag and take out the moisture absorber. Attach the supplied moisture absorber to the inner side of the Network Camera. (Please replace the moisture absorber with a new one if you open the back cover after installation.)
4. Make sure all cable lines are securely connected.
5. Tighten the back cover, rubber and waterproof connector.
6. Secure the Network Camera to the wall/ceiling by the supplied camera stand.



Note

If you want to use your own cable lines, please loosen two supplied screws and take out the power board. Then be careful to make connections as the illustration below.



4

Network Deployment

General Connection (without PoE)

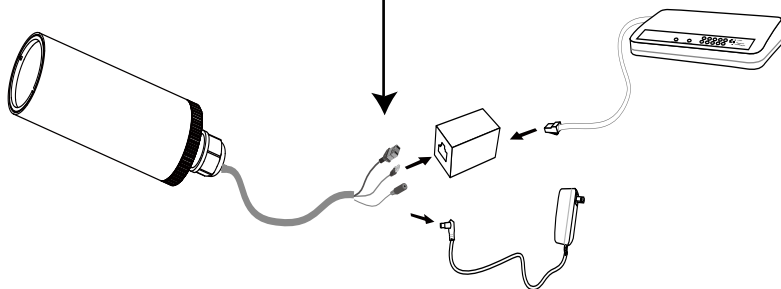
1. If you have external devices such as sensors and alarms, make connections from general I/O terminal block.



AC24V: 24V+
 AC24V: 24V-
 DI : Digital Input
 GND : Ground

2. Use the supplied RJ45 female/female coupler to connect the Network Camera to a switch.

Use a Category 5 Cross Cable when your network camera is directly connected to PC.

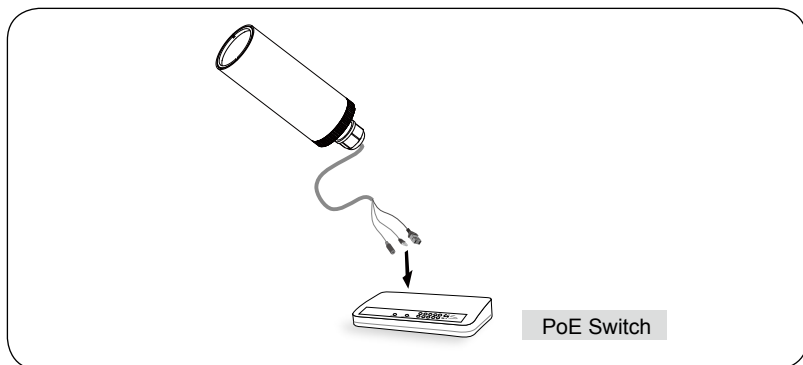


3. Connect the power cable from the Network Camera to a power outlet.

Power over Ethernet (PoE)

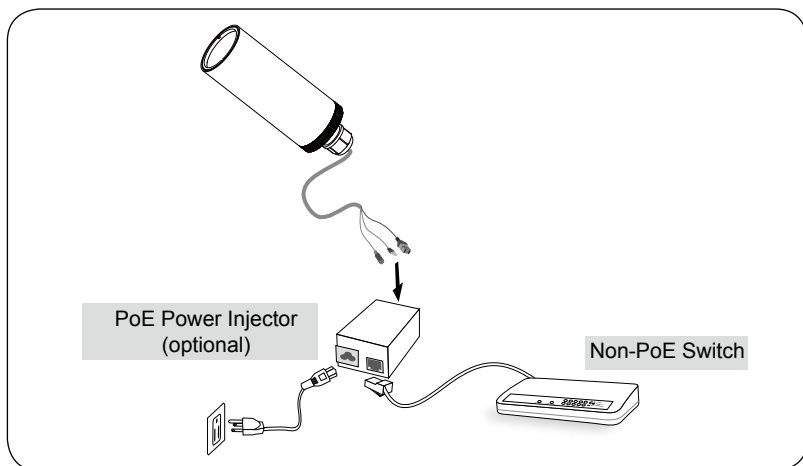
● **When using a PoE-enabled switch**

The Network Camera is PoE-compliant, allowing transmission of power and data via single Ethernet cable. Follow the below illustration to connect the Network Camera to a PoE-enabled switch via Ethernet cable.



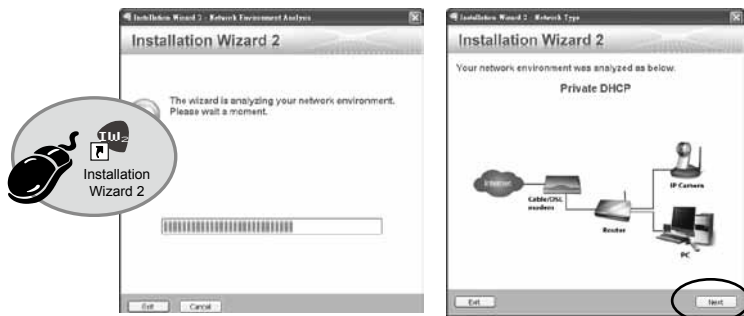
● **When using a non-PoE switch**

Use a PoE power injector (optional) to connect between the Network Camera and a non-PoE switch.



5 Assigning an IP Address

1. Install the "Installation Wizard 2" from the Software Utility directory on the software CD.
2. The program will conduct an analysis of your network environment. After your network is analyzed, please click on the "Next" button to continue the program.



3. The program will search for VIVOTEK Video Receivers, Video Servers or Network Cameras on the same LAN.
4. After a brief search, the main installer window will pop up. Double-click on the MAC address that matches the one printed on the camera label or the S/N number on the package box label to open a browser management session with the Network Camera.



1. A browser session with the Network Camera should prompt as shown below.
2. You should be able to see live video from your camera. You may also install the 32-channel recording software from the software CD in a deployment consisting of multiple cameras. For its installation details, please refer to its related documents.



For further setup, please refer to user's manual on the software CD.

