

| | |
|--------------|--|
| D4CS | 4 Channel DVR with Digital Deterrent™ |
| D8CS | 8 Channel DVR with Digital Deterrent™ |
| D16CS | 16 Channel DVR with Digital Deterrent™ |

| | | |
|---------|---------|----------|
| D4CS500 | D8CS500 | D16CS500 |
| D4CS1TB | D8CS1TB | D16CS1TB |
| D4CS2TB | D8CS2TB | D16CS2TB |

Storage from 500GB up to 2TB
For the latest mobile apps
and CMS software go to:
www.specotech.com/DVRApps

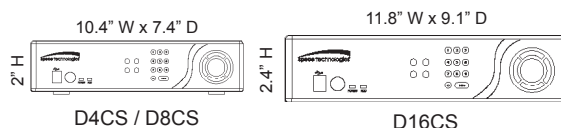


Features

EZ Setup: for quick system setup
EZ Network: for quick set-up on a network
EZ Search: quickly search events from thumbnails
EZ Record: quickly setup recording resolutions and recording type
EZ Copy: auto copy what you are playing onto a USB flash drive

- H.264 video compression
- Built-in S.M.A.R.T. Technology (Self-Monitoring, Analysis and Reporting, Technology for HDD)
- Free Speco DDNS service for use with dynamic IP addresses
- MAC® & PC compatible software included
- Remote monitoring, recording, playback, change system settings and camera control via network and/or internet
- Real time live display
- IR remote control included - individually control up to 16 DVRs
- Multiple analytics such as museum search and advanced motion detection
- USB 2.0 port for video clip exporting
- Easy software upgrade via network or USB flash drive
- Configurable per channel normal and event recording frame rate & picture quality or globally via EZ record
- Full system monitoring
- SNS communication alert via Twitter™
- Per channel built-in PTZ camera protocol including Pelco D
- Automatic camera detection (Plug & Play)
- Digital zoom in live mode and playback

- Covert camera operation provides enhanced security and administrator control
- Playback while watching live on same monitor
 - Up to 30 minutes pre-alarm recording
 - Up to 15 minutes post-alarm recording
- User Access: up to 10 concurrent users
- Hard drive status monitoring
- Remote upgrade
- USB mouse supported (not included)
- Multiple language on-screen menus
- Password to secure installation with configurable user authentication levels
- SecureGuard™ Plus compatible
- 2-way audio communication
- 3 year warranty
- **Free Apps with support for view on most smart devices**
iPhone and Android are trademarks of Apple & Google respectively. Blackberry is registered to Blackberry.



Specifications

Recording Rate: up to 480FPS
Simultaneous live view or playback while continuing to record, network transfer
Email notification of alarm events
DVR supports static IP, DHCP, PPPoE and DDNS
Power Consumption: 4 CH: 12V/3A
8 / 16 CH: 12V/5A

Power Supply - UL power supply included
Operating Temperature: 41° F – 104° F
Dimensions: 4 / 8 CH: 10.4" (W) x 2" (H) x 7.4" (D)
16 CH: 11.8" (W) x 2.4" (H) x 9.1" (D)
Weight: 4 / 8 CH: 3.75 lbs.
16 CH: 5.5 lbs.

Optional Accessories



Speco Technologies is constantly developing and improving products.

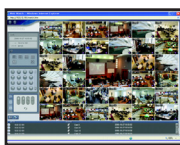
We reserve the right to modify product design and specifications without notice and without incurring any obligation.

Rev. 1/26/15

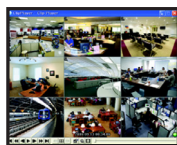
Applications



Speco Central
Remote software providing 64 cameras live/playback, event monitoring, local recording, E-map and device management.



Speco Remote
Web based remote monitoring software which can be downloaded from web browsers in ActiveX format.



Speco Player
Self executable video player containing non-alterable recorded data from the DVR.



Speco Mobile
Remote monitoring software running on mobile devices like Android™ and Blackberry®.



Remote monitoring software for iPhone® and iPad®



| Model Name | D4CS | D8CS | D16CS |
|------------------------|--|--------------------------------------|---------------------------------------|
| Video Inputs | 4 | 8 | 16 |
| Video Outputs | 1 BNC / 1 VGA | | |
| Display Resolution | 720 x 480 | | |
| RECORD & PLAYBACK | | | |
| Compression | H.264 | | |
| Recording Rate | 120 fps@CIF / 60 fps@2CIF / 30 fps@D1 | 240 fps@CIF/ 120 fps@2CIF/ 60 fps@D1 | 480 fps@CIF/ 240 fps@2CIF/ 120 fps@D1 |
| Playback Rate | 120 CIF | 240 CIF | 480 CIF |
| Recording Mode | Time-Lapse, Event, Pre-Event (up to 30 min), Panic | | |
| Search Mode | Date/Time, Record Table, Calendar, Event, Motion, Museum | | |
| SYSTEM | | | |
| Operating System | Embedded Linux | | |
| Firmware Base | XDR Type | | |
| Storage | Max. 1 HDD | | |
| Data Export | USB (HDD, Flash Drive) | | |
| NETWORK | | | |
| Connection | Ethernet | | |
| Protocols | Manual, ADSL, DHCP, DDNS | | |
| Remote Software | Speco Central, Speco Remote (Internal, External) | | |
| Max Transmission Rate | 120 CIF | | |
| INTERFACE | | | |
| Audio In / Out | RCA 4 / 1 | | |
| Alarm In / Out | 4 / 1 (relay, NO) 8 / 1 (relay, NO) 16 / 1 (relay, NO) | | |
| Serial Interface | RS232, RS485 | | |
| External Interface | 2 x USB 2.0 | | |
| User Interface | Front Buttons, Mouse, IR Remote Control | | |
| OTHER | | | |
| Dimensions (W x H x D) | 10.4 x 2" x 7.4" | 10.4 x 2" x 7.4" | 11.8" x 2.4" x 9.1" |
| Unit Weight | 3.75 lbs. | 3.75 lbs. | 5.5 lbs. |
| Operating Temperature | 41° F – 104° F | | |
| Operating Humidity | 0% – 90% | | |
| Power | 12V / 3A | 12V / 5A | 12V / 5A |

Please note that specifications and unit exterior design are subject to change without notification.