

The Smallest High Resolution Armored Aluminum Dome Camera

Covert Pinhole Dome

KPC-S800/S801DCH

- 1/3" Sony Super HAD CCD
- Super High-Resolution of 550 TV Lines
- Extreme Clear Cutting Edge Picture
- Unmatched Low-Light Sensitivity of 0.05 Lux



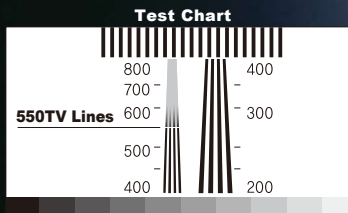
■ Superior Image Resolution of 550TV Lines



Conventional High-Resolution Camera



550TV Lines



■ Outstanding performance of KPC-S800/S801DCH comparing with conventional and ExView CCD Camera



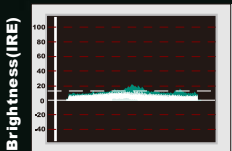
Conventional CCD



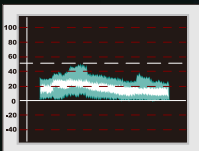
Exview HAD CCD



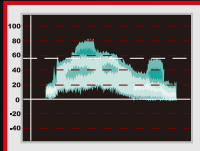
KPC-S800/S801DCH



Waveform

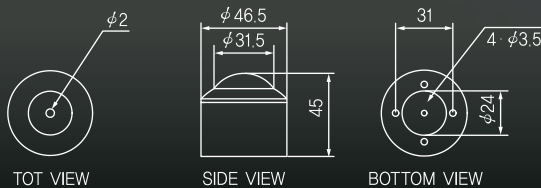


Waveform

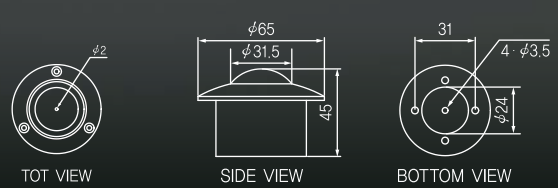


Waveform

■ Dimensions



KPC-S800DCH



KPC-S801DCH



■ Model No.

Mount Type	Housing Color	Model No.
Ball	Black	KPC-E800HB
	Silver	KPC-E800HS
Surface Mount	Black	KPC-S800DCHB
	Silver	KPC-S800DCHS
Flush Mount	Black	KPC-S801DCHB
	Silver	KPC-S801DCHS

■ Specification

Model	KPC-E800H	KPC-S800DCH	KPC-S801DCH
Image Sensor	Interline 1/3" SONY SUPER HAD CCD		
Scanning System	2:1 interlace		
Total / Effective Pixels	NTSC - 410K/380K, PAL - 470K/440K		
Resolution	550 TV line		
Shutter Speed	NTSC - 1/60 ~ 1/100,000sec, PAL - 1/50 ~ 1/100,000sec		
S/N ratio	More than 48 dB (AGC off)		
Sensitivity	0.05 Lux / FacePlate		
Sync. System	Internal		
Video Output	1.0Vpp composite(75Ω)		
Power supply	DC12V (±10%)		
Lens	f=3.7mm(90°) Cone Pinhole		
Operating Temperature	-10° ~ 50° (Humidity : 0%RH ~ 80%RH)		
Storage Temperature	-20° ~ 60° (Humidity : 0%RH ~ 85%RH)		
Application	Any Application	Surface Mount	Flush Mount

Global Head Office & Factory in Korea
KT&C Co., Ltd.

KT&C Bldg., 487-4 Bangwha-Dong,
Gangseo-Gu, Seoul, Korea

Tel : +82-2-3662-0118 Fax : +82-2-3662-0116 [http : //www.ktnc.co.kr](http://www.ktnc.co.kr) Email : ktnc@ktnc.co.kr / sales@ktnc.co.kr



Manufacturer & Exporter
KT&C CO., LTD.
Korea Technology and Communications