



**Correct Disposal of This Product
(Waste Electrical & Electronic Equipment)**

(Applicable in the European Union and other European countries with separate collection systems)

This marking shown on the product or its literature, indicates that it should not be disposed with other household wastes at the end of its working life. To prevent possible harm to the environment or human health from uncontrolled waste disposal, please separate this from other types of wastes and recycle it responsibly to promote the sustainable reuse of material resources.

Household users should contact either the retailer where they purchased this product, or their local government office, for details of where and how they can take this item for environmentally safe recycling.

Business users should contact their supplier and check the terms and conditions of the purchase contract.

This product should not be mixed with other commercial wastes for disposal.

This device complies with Part 15 of the FCC Rules. Operation is subject to the following two conditions:

1. This device may not cause harmful interference.
2. This device must accept any interference received, including interference that may cause undesired operation.

Note - This equipment has been tested and found to comply with the limits for a Class A digital device, pursuant to part 15 of the FCC Rules. These limits are designed to provide reasonable protection against harmful interference when the equipment is operated in a commercial environment. This equipment generates, uses, and can radiate radio frequency energy and, if not installed and used in accordance with the instruction manual, may cause harmful interference to radio communications. Operation of this equipment in a residential area is likely to cause harmful interference in which case the user will be required to correct the interference at his own expense."

WARNING

This is a class A product. In a domestic environment this product may cause radio interference in which case the user may be required to take adequate measures.

Caution - Any changes or modifications in construction of this device which are not expressly approved by the party responsible for compliance could void the user's authority to operate the equipment.

CAUTION

1. A regulated DC12V/300mA power supply is recommended for use with this camera for the best picture and the most stable operation.

An unregulated power supply can cause damage to the camera.

When unregulated power supply is applied, product warranty will be out of subject.

2. It is recommended that the camera is used with a monitor that has a CCTV quality 75 video impedance level. If your monitor is switched to high impedance then please adjust accordingly.
3. Do not attempt to disassemble the camera to gain access to the internal components. Refer servicing to your dealer.
4. Never face the camera towards the sun or any bright or reflective light, which may cause smear on the picture and possible damage to the CCD.
5. Do not remove the serial sticker for the warranty service

SPECIFICATION

MODEL	B/W Version	Colour Version	
Image Device	SONY 1/3" Super HAD CCD SONY 1/3" EXview CCD	SONY 1/3" Super HAD Colour CCD SONY 1/3" EXview Colour CCD	SONY 1/3" Super HAD Colour CCD
Effective Pixels	EIA : 510(H) X 492(V) CCIR : 500(H) X 582(V)	NTSC : 510(H) X 492(V) PAL : 500(H) X 582(V)	NTSC : 768(H) X 494(V) PAL : 752(H) X 582(V)
Scanning System	2 : 1 Interlace		
Sync System	Internal		
H.Resolution	More than 420 TV lines	More than 380 TV lines	More than 550 TV lines
Low Lux Sensitivity	0.05 Lux / F2.0 0.0003 Lux / Face Plate	0.5 Lux / F2.0 0.01 Lux / Face Plate	0.05 Lux / Face Plate
S / N Ratio	More than 50dB (AGC off)	More than 45dB (AGC off)	
Gamma Correction	r = 0.45		
Video Output	Composite 1 [Vp-p]75(Ω) unbalanced		
Electronic Shutter	1/50(CCIR/PAL), 1/60(EIA/NTSC) ~ 1/100,000 sec Automatic		
Current Consumption	100mA or less	180mA or less	60mA or less
Power Supply	DC 12V (±10%)		
Operating Temperature	-10℃ ~ +50℃	-10℃ ~ +45℃	-10℃ ~ +50℃
Pinhole Lens Mount	f4.3mm - 78° or f3.7mm - 90°		
Gain Control	-	Automatic	
White Balance	-	Automatic	
Dimensions	Wall mount type : 47φ x 45mm(H)		Ceiling Mount type : 65φ x 45(H)

Face Plate : Point at the CCD without obstruction of light from any other material.

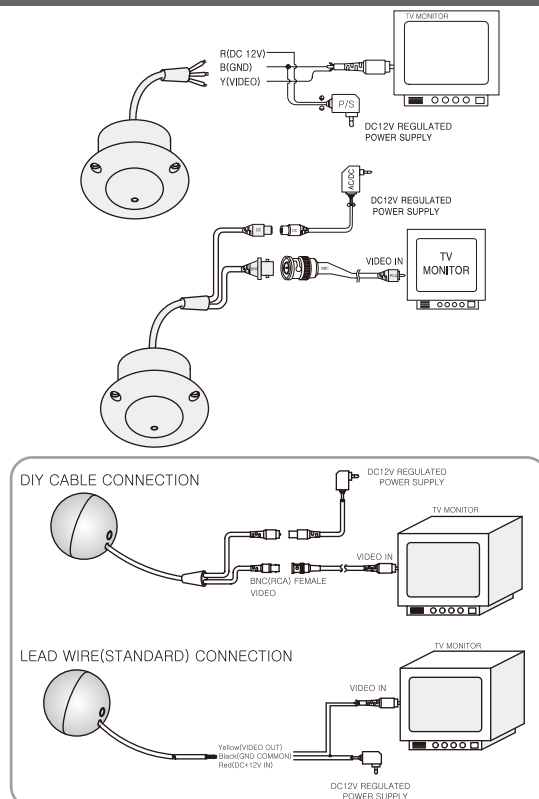
M42-E800/600-004

DSP COLOUR & B/W MINIATURE DOME CAMERA SERIES

INSTALLATION / INSTRUCTION MANUAL



INSTALLATION DIAGRAM



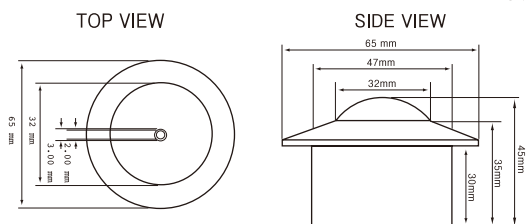
! When you install the camera, please glue up the end of cable to keep it stable in order to protect the camera from the humidity problems.

ACCESSORIES FURNISHED

Item Description	Q'ty	Option
1. DIYcable	0	1
2. Screw	4	.
3. Manual	1	.

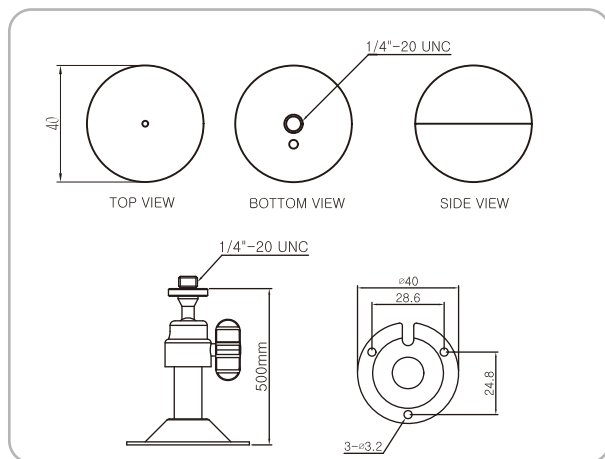
DIMENSIONS

UNIT:mm

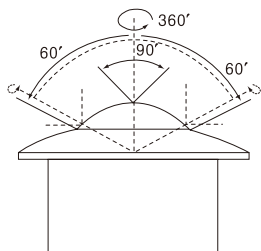


INTRODUCTION

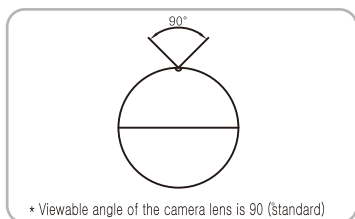
- This unit is a micro-compact, vandal resistant ceiling or wall mount Dome camera in an aluminum casing using a high quality pinhole lens.
- The camera utilizes image enhancement technology to produce superb picture quality. Low lux sensitivity is as low as 0.05 lux @ F 2.0(B/W) and 0.5 lux @ F 2.0(COLOUR).
- The camera power requirement is DC 12V($\pm 10\%$) using a regulated supply.
- This model camera employs state-of-the-art technology and contemporary design as an ideal solution to most internal CCTV and covert applications.



ANGLE OF VIEW

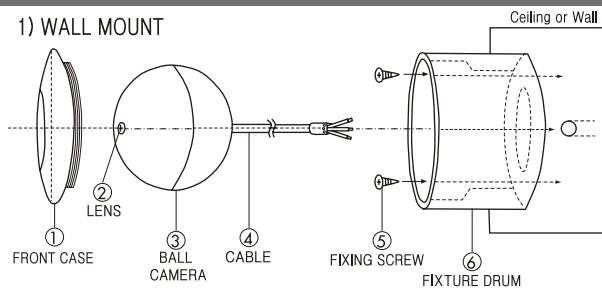


- ① Camera revolves 360°
- ② Camera ball is adjusted to max 60° from the axis to each end of the front case.
- ③ Viewable angle of the camera lens is 90° (Standard)
 - 78° is available as an option.



INSTALLATION

1) WALL MOUNT



2) CEILING MOUNT

