

# Quick User Guide HT

speco technologies



8 and 16 Channel  
1080p HD-TVI & IP Full Hybrid DVRs  
Desktop Model : D8HT, D16HT

Visit [www.specotech.com](http://www.specotech.com) for the latest software and updates,  
Tech Support : 1-800-645-5516

Rev. 18/12/2015

1

## OSD Main Menu

- To enter the main menu, right click on the mouse and select setup from the submenu or press the setup button on the remote control
- Enter username and password. The default username is admin and password is 1111.

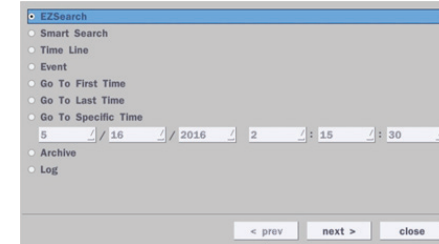
Search
Setup
Display
Snapshot
Super EZ Copy
Enable Manual Record
Instant Playback
Advanced Menu
EZ Setup
Audio Mute
Camera PTZ
Enable Main Monitor Sequence
Disable Alarm Out
Manual Digital Deterrent
Site Information
System Information
Export Help
System Lock
System Shutdown

Option	Description
SEARCH	Select this option to enter the Search menu
SETUP	Select this option enter the Setup menu
DISPLAY	Select between different multi-view display formats.
SNAPSHOT	Click this option to create a snapshot of selected channel image. (JPEG STILL IMAGE)
SUPER EZ COPY	Instant Backup
ENABLE MANUAL RECORD ON/OFF	Select this option to enable/disable manual recording. Also known as Panic Record. Default is set to continuous recording.
ADVANCED MENU	
EZ SETUP	Select this option to start EZ Setup Wizard
AUDIO MUTE	Select this option to set an audio channel to output; (Channel 1 through 4, Audio Mute).
CAMERA PTZ	Select this option to access the PTZ interface
ENABLE MAIN MONITOR SEQUENCE	Select this option to enable/disable video sequence function
DISABLE ALARM OUT	Select this option to enable/disable Alarm outputs.
MANUAL DIGITAL DETERRENT	Displays a window where the user can manually trigger the Digital Deterrent audio message.
SITE INFORMATION	Press the button to view the record setting of a selected channel.
SYSTEM INFORMATION	Displays a window with the system information
EXPORT HELP	Displays quick instructions for exporting video.
SYSTEM LOCK	Locks the NVR from unauthorized user access..
SYSTEM SHUTDOWN	Click this button to shutdown system.

2

## Playback

Select SEARCH from the sub-menu



### EZSearch

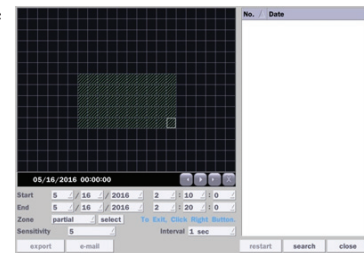
Select EZ SEARCH and click NEXT.  
Select the MONTH, DATE and Channel.  
Thumbnail shows 4 steps.  
Every 1 hour, 2.5 minutes, 10 seconds and 1 second.  
Double click then last image for playback.



3

## Smart Search

- Select the MONTH, DATE and Channel Select the start time and End time that user want to search.
- Set Zone as 'Partial' or 'Full' Partial zone can select the area that user want.
- Click [ ] this after selection as 'Partial' then user can drag the area.
- Click right mouse button when the area selection was finished.
- Select 'SEARCH' then show the detected motion lists at the right blank.
- Click the list that user want to playback.



## Time Line

- Select TIME LINE and click NEXT.
- Select the specific MONTH, DATE, and click NEXT.
- Select the specific HOUR, MINUTE, and CHANNEL and click PLAY. Playback will begin.

## Event

- Select EVENT and click NEXT.
- Select the specific MONTH, DATE and click NEXT.
- Select the specific EVENT and click PLAY. Playback will begin.

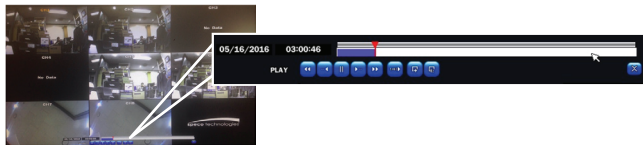
## Specific Time

- Select GO TO SPECIFIC TIME and select the specific time to begin playback.
- Click on PLAY to begin playback.

4

## Export

- Go into playback mode as described in the previous section.
- Export(BACKUP)**
- Click on BACKUP near the bottom of the playback screen.



- Select the ARCHIVE MEDIA TYPE and click NEXT.
  - STILL IMAGE: snapshots
  - NSF: proprietary \*.nsf video format
  - AVI: \*.avi video format, Integrated Subtitle
  - AVI: \*.avi video format, Separated Subtitle, MAC compatible
- Select the MEDIA TYPE (USB DRIVE) and click NEXT.
- Select the specific CHANNEL and DURATION and click START to begin export.

## EZCopy

- Click on EZCOPY START near the bottom of the playback screen. This will begin the start time of the recorded data to be exported.



5

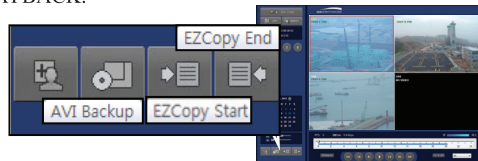
- The DVR will continue to play the recorded video.
- Move time cursor to go to the time to end backup.
- Click on EZCOPY STOP and this will end the data export
- Select the FILE FORMAT and click NEXT.
- Select the specific CHANNEL and click START to begin export.

## Event

- To export an event, go into Live mode and go to SEARCH from the sub-menu.
- Select EVENT and click NEXT.
- Select the specific MONTH, DATE and click NEXT. The list of events will be shown.
- Select the specific EVENT and click BACKUP.
- Select the MEDIA TYPE (USB DRIVE) and click BACKUP to begin export of event.

## Export via Web-Browser Viewer

- Start Internet Explorer and enter the IP address and port of the DVR.
  - For example [http://\[ip address\] : \[port\]](http://[ip address] : [port]) → <http://192.168.80.6:80>
- The ActiveX controls and plug-ins dialog will be prompted for installation.
- Install the plug-ins.
- Click on CONNECT and enter the IP, port number, username and password of the NVR.
  - The default usernames and passwords are admin / 1111 and user1 / 1111.
- Click on SEARCH to go into PLAYBACK.



6

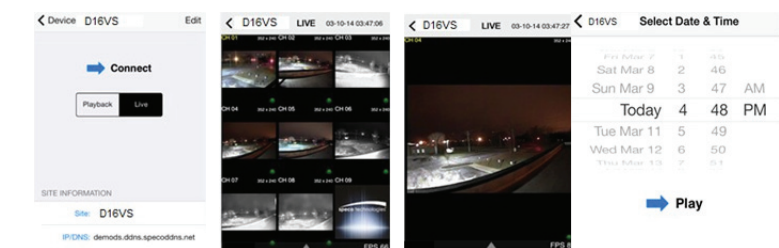
- Click on EZCOPY START near the bottom of the playback screen. This will indicate the start time of the recorded data to be exported.
- The NVR will continue to play the recorded video.
- Move time bar cursor to go to the time to end backup.
- Click on EZCOPY END and this will indicate the end time of the data export.
- Select AVI BACKUP button.
- Select the CHANNEL, FILE FORMAT, FILE PATH and click OK to begin export.

## Viewing DVR via Mobile Devices

The D8/D16HT provides mobile surveillance software for the iPhone® and the Android™

### iPhone®

- Search for 'Speco Player' in the Apple App Store and install the app.

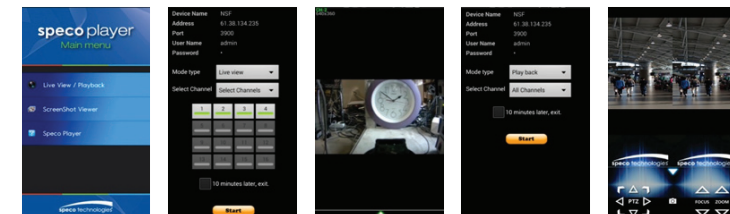


- Select the ADD menu and enter site information. Click ADD to save the site information
- Select the saved site from "Devices"
- Select Playback/Live then click Connect

7

### Android™

- Search for 'Speco Player' in the Android Play Store and install the App.



- Select the ADD menu and enter site information. Click ADD to save the site information
- Select the saved site from "Devices" and select LIVE VIEW or PLAYBACK
- Select 4 channels to view and click "Start" button

## SpecoTech Multi-Client Viewer

SpecoTech Multi-Client Viewer Software is a multiple site monitoring client software that allows streaming of video and audio, and transmission of alarm signals from the DVRs over the network.  
The SpecoTech Multi-Client can display up to 16 NVRs and supports dual monitors. PTZ Camera control is also supported by this software  
By attaching a microphone and speaker system to devices on site, the user may make bi-directional audio communication over the network Refer to the complete manual for more information.

The SpecoTech Multi-Client Viewer Software and manual are included on the CD.

8