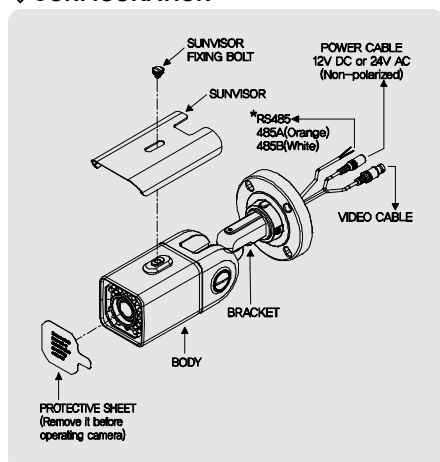


◆FEATURE

1. Long visible range at night.(50m Max. indoors, 40m Max. outdoors)
2. This camera uses split glass technology to prevent IR light reflection.
3. This camera has a Varifocal IR lens to prevent focus drift under IR lighting.
4. The IR cut filter is removed at night to receive maximum available light.
5. This product is weather proof to resist rain, snow and other environmental factors. (IP65)
6. This product is made of corrosion-free materials to resist rust and corrosion for extended periods of time.
7. The built-in sunshield helps the camera produce clear pictures under a variety of lighting conditions.
8. Power & video cables are concealed for extra security. (Cable through the mount).
9. Unique bracket allows the camera to be fully adjustable from both wall and ceiling mounting positions.
10. Dual voltage operation. You can connect 24V AC or 12V DC regardless of polarity. The Line-Lock function is available when you use 24V AC power.
11. The IR output level is adjustable to suit any lighting condition.
12. High magnification zoom / Auto focus
- Max. 100X zoom is available.(Optical:10X, Digital:10X)
- It features "Auto focus" for maximum versatility.
13. DNR (Digital Noise Reduction)
By using this DSP chip and associated technology, the amount of low light noise has been significantly reduced, and the signal-to-noise ratio(S/N) as well as horizontal resolution has been improved, resulting in a clear and sharp image display even in the dark.
14. Privacy zoom masking (max. 32 zones/8 programmable zone per screen)
The privacy zone function makes it possible to mask specific areas of the scene from view.
15. Motion Detection (4 programmable zone per screen)
You can transmit an alert signal when it detects motion of an object on the screen. This feature is useful when you have to monitor several screens simultaneously.
16. High resolution Horizontal Resolution of 560 TV Lines:
Clear image quality has been achieved by employing a 1/4" SONY Super HAD CCD with 410,000 pixels, which provides a horizontal resolution of 560 TV lines.
17. OSD (On Screen Display)
For easy adjustment of all features.
18. RS-485 control
RS-485 communication is available to control the camera OSD and lens
19. Day & Night function
The camera can distinguish between day and night and will make changes according to the conditions. It maintains the most suitable color in daytime and B/W at night.

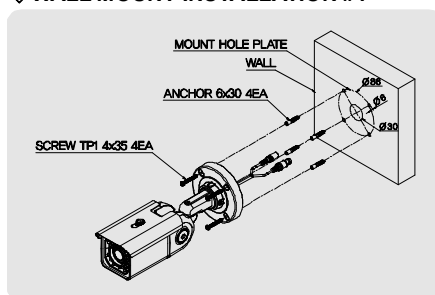
◆CONFIGURATION



<Caution>

RS485 signal only-Do not apply power to this cable.
To avoid product failure, connect ORANGE wire to RS485A and WHITE to RS485B, Never do it backwards.

◆WALL MOUNT INSTALLATION #1

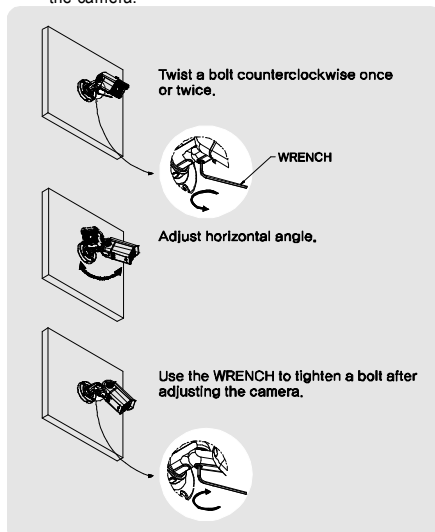


1. Make a hole Ø30mm in diameter for routing cable.
2. Using the mounting plate, drill four holes on the wall.
3. Insert the anchors.
4. Attach the screws.

◆WALL MOUNT INSTALLATION #2

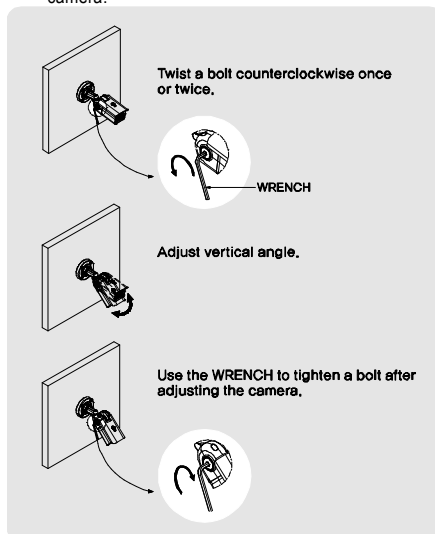
1. Adjust horizontal angle.

- 1) Loosen the bolt to adjust the horizontal angle of the camera.
- 2) Use the WRENCH to tighten the bolt after adjusting the camera.

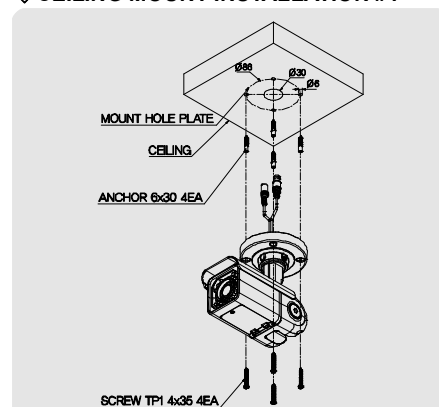


2. Adjust vertical angle

- 1) Loosen a bolt to adjust vertical angle of the camera.
- 2) Use the WRENCH to tighten a bolt after adjusting the camera.



◆CEILING MOUNT INSTALLATION #1

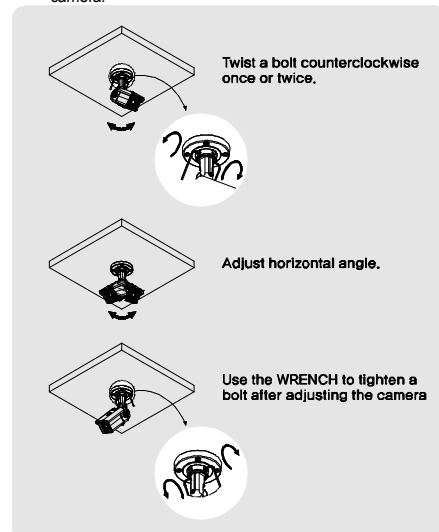


1. Make a hole Ø30mm in diameter for routing cable.
2. Using the mounting plate, drill four holes on the ceiling.
3. Insert the anchors.
4. Attach the screws.

◆CEILING MOUNT INSTALLATION #2

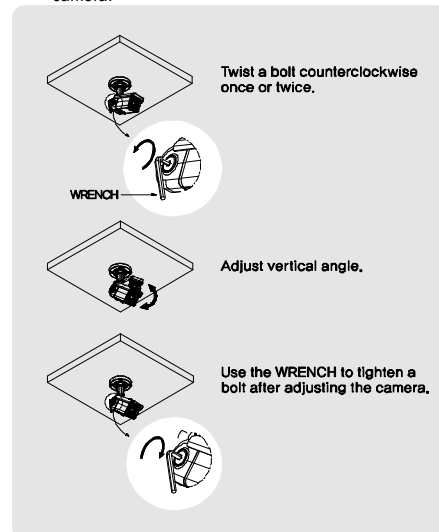
1. Adjust horizontal angle.

- 1) Loosen the bolt to adjust the horizontal angle of the camera.
- 2) Use the WRENCH to tighten the bolt after adjusting the camera.

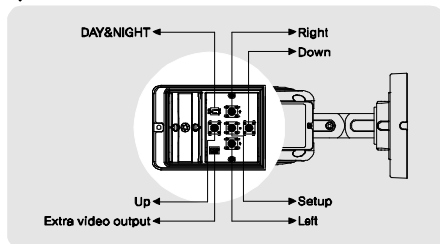


2. Adjust vertical angle

- 1) Loosen the bolt to adjust the vertical angle of the camera.
- 2) Use the WRENCH to tighten a bolt after adjusting the camera.

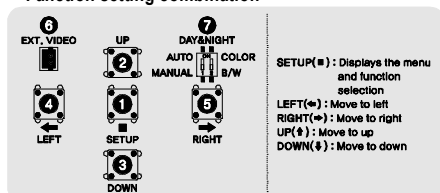


FUNCTIONS



1. Setup for camera functions

• Function setting combination



• OSD MENU

- ① **SETUP :**
To access the main menu.
Push this button for 1 second.
- ② **TELE / UP :**
To zoom in on a far object.(ZOOM-IN) /
Moves the arrow indicator to up.
- ③ **WIDE / DOWN :**
To widen the view (ZOOM-OUT) /
Moves the arrow indicator to down.
- ④ **NEAR / LEFT :**
To focus on a near object clearly. /
Moves the arrow indicator to the left.
- ⑤ **FAR / RIGHT :**
To focus on a far object clearly. /
Moves the arrow indicator to the right.
- ⑥ **EXT. VIDEO :**
Plug your test monitor in here.
- ⑦ **DAY & NIGHT :**
- AUTO : DAY & NIGHT auto
- MANUAL : DAY & NIGHT passive
Color : Color fixed regardless illumination.
B/W : B/W fixed regardless illumination.(IR ON)

2. Camera function setting

| MAIN SETUP | | |
|------------------|---------------------------------|--|
| CAMERA TITLE | OFF ON | Set Camera Title String and OSD Display Position. |
| WHITE BAL | ATW -Mode: OUTDOOR INDOOR | ATW is controlled by color temperature range *MODE - INDOOR : 3000~10,500°K - OUTDOOR : level |
| | AWC→SET | ONE PUSH |
| | MANUAL | RED / BLUE Adjustable. |
| BACKLIGHT | OFF / LOW / MIDDLE / HIGH | Backlight compensation. |
| MOTION DETECTION | OFF | Motion detection off |
| | ON | AREA(4 Programmable zone/ SIZE) The words "MOTION DETECTED" appear on the screen when movement is detected. |
| FOCUS↵ | | Refer to focus setup |
| EXPOSURE↵ | | Refer to exposure setup |
| SPECIAL↵ | | Refer to special setup |
| RESET | | Returns to the level which was set by the manufacturer for shipment.(except for communication and Day & Night) |
| EXIT | | Saves all settings, then exits. |

| FOCUS SETUP TABLE | | |
|-------------------|-----------|--|
| MODE | AUTO | Focus is controlled automatically |
| | MANUAL | Focus is controlled manually |
| | ONE-PUSH | Focus is automatically adjusted just once, after zoom position is changed. |
| ZOOM TRK | OFF ON | Zoom tracking off Zoom tracking on |
| ZOOM SPEED | FAST/SLOW | Zoom speed Control |
| D-ZOOM | OFF ON | Digital zoom off Digital zoom limit selectable (x2 ~ x10). |
| DIS ZOOM MAG | OFF ON | Zoom magnification display off Zoom magnification display on. |
| ZOOM POS INIT | OFF ON | When initialized, zoom position is disabled. Zoom magnification set at power on(x1 ~ x10) |
| LENS INIT | | Execute lens initialization. |

| EXPOSURE SETUP TABLE | | |
|----------------------|---------------------|---------------------------------------|
| BRIGHTNESS | | Brightness level adjustment. |
| IRIS | MANUAL | IRIS is controlled manually. |
| | AUTO | IRIS is controlled automatically. |
| SHUTTER | MANUAL | Shutter is controlled manually |
| | A. FLK | Anti-flicker |
| AGC | OFF | Automatic gain control off. |
| | NORMAL / HIGH | Automatic gain control limit set. |
| SSNR | OFF | Noise reduction off. |
| | LOW / MIDDLE / HIGH | Noise reduction level set. |
| SENS-UP | OFF | Sense-up off |
| | AUTO | Sense-up limit selectable (x2 ~ x128) |

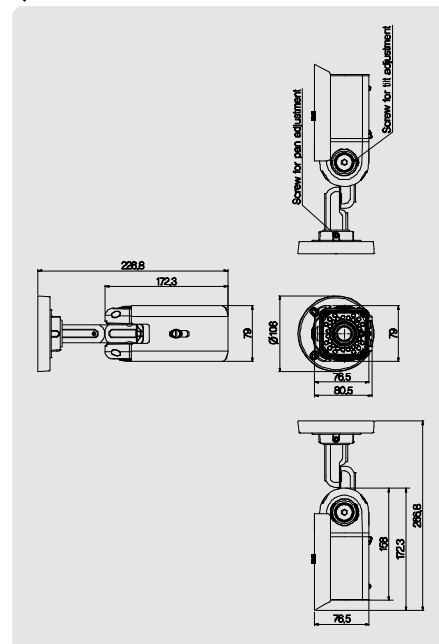
| SPECIAL SETUP TABLE | | |
|---------------------|-----|--|
| USER PRESET | OFF | Turns function off |
| | ON | Using the position preset function, 8 sets of camera shooting conditions can be stored and recalled. |
| PRIVACY | OFF | Privacy mask off |
| | ON | AREA(4 Programmable zone) / SIZE / TONE adjustable. |
| SYNC | INT | Internal Sync. |
| | LL | External Sync(can adjust desired phase from 0° ~ 359°). Trigger Signal: Auto Detection. |
| COMM ADJ↵ | | Refer to communication setup |
| IMAGE ADJ↵ | | Refer to communication setup |

| COMMUNICATION SETUP TABLE | | |
|---------------------------|-----------------------|---|
| CAM ID | OFF | ID not displayed |
| | ON | Camera names are displayed |
| DISP CAM ID | OFF | Communication ID display off. |
| | ON | Communication ID display on. |
| BAUD RATE | 2400 ~ 57600 | Baud-rate set (factory default : 2400). |
| UART MODE | 8-E-1 / 8-0-1 / 8-N-1 | Parity bits selectable. (factory default : 8-N-1) |
| RET PKT | DISABLE | Do not send a command back to the control & device. |
| | ENABLE | Returning the data when communication. (Caution : Activate this function to use D&N.) |

* Protocol: Pelco-D

| IMAGE SETUP TABLE | | |
|-------------------|-----|---|
| FREEZE | OFF | Freeze image: OFF |
| | ON | Freeze image: ON |
| H-REV | OFF | Horizontal reverse: OFF |
| | ON | Horizontal reverse: ON |
| V-REV | OFF | Vertical reverse: OFF |
| | ON | Vertical reverse: ON |
| SHARPNESS | OFF | Sharpness control is disabled. |
| | ON | The Sharpness can be adjusted. |
| COLOR GAIN | | The Color level can be adjusted (0~100) |

DIMENSIONS



SPECIFICATION

| | |
|-----------------------|--|
| Model | HTB10X |
| Type | Weatherproof x10 optical motorized zoom color camera |
| Image Sensor | 1/4" SONY SUPER HAD CCD |
| Effective Pixel | 768(H) X 494(V) |
| TV Type | NTSC |
| Scanning System | 2:1 Interlace |
| Sync. System | Internal / Line lock |
| Scan. Freq.(HOR.) | INT : 15.734KHz L/L : 15.750KHz |
| Scan. Freq.(VERT.) | INT : 59.94Hz L/L : 60.00Hz |
| Resolution | 580 lines resolution(IR ON) 560 lines resolution(IR OFF) |
| Video Output | 1.0 Vp-p(Sync. Negative) with 75Ω Termination |
| S/N Ratio | More than 50dB(weight ON) |
| Min. Illumination | 0.05 Lux (F1.8) : LED OFF 0 Lux (40M range) : LED ON |
| Gamma | r = 0.45 |
| Shutter Speed | Auto(x128 ~ 1/60 ~ 1/120,000sec) Sense-up and Sense-up limit is selectable, Flickerless |
| White Balance | ATW / AWC / Manual(1,800 ~ 10,500°K) |
| SSNR | LOW / MIDDLE / HIGH / OFF |
| Motion Detection | ON / OFF(4 programmable zone per screen) |
| Privacy Function | ON / OFF(32 zones, It consists of 8 group 4 programmable, zone per screen) |
| Flip | Vertical, Horizontal, Vertical-Horizontal, OFF |
| Preset | 8 position |
| OSD | Yes |
| ZOOM | Optical zoom 10X, Digital zoom 10X |
| FOCAL Length | f = 3.8(W) ~ 38.0(T) F 1.8(W) ~ F 2.8(T) |
| Angle of View | 51.2°(Wide End), 5.58°(Tele End) |
| Min. Working Distance | 0.1M |
| Communication | RS-485 |
| Power Supply | 24 Volts AC, 12 Volts DC - Dual Voltage |
| Current Consumption | Max. 600mA |
| Operation Temp. | -20 °F to 140 °F |
| Dimension | 3.1"W x 3"H x 6.8"L |
| Weight | 3.3 lbs. |

*The specification is subject to change without any prior notice to improve the quality. Rev. 1/25/10.