

Esprit® TI Series Thermal PT IP Positioning Systems

IP THERMAL CAMERA WITH INTEGRATED PAN/TILT

Product Features

- Thermal observation system with an integrated pan tilt mechanism
- High quality, 24/7 performance
- Unique image processing and enhanced contrast optimized for video analytics
- Mid-range detection and observation, uses the latest 17μ 640 x 480 (VGA) thermal technology
- IP video output
- Ships with an optional sun shield
- Rugged design, IP66 ingress protection
- ONVIF S compliant
- Athermal optics (19 mm, 35 mm, 50 mm, or 100 mm)
- Multiple, configurable streams in H.264 and MJPEG



- TCP/IP control

Positioning System

The Esprit® TI Series Thermal IP Positioning System is an advanced thermal imaging pan/tilt system designed for easy integration into any new or existing video security application. The system is designed to provide detection, recognition, and identification of people and vehicles in any lighting condition, including complete darkness. Esprit TI Series Thermal IP Positioning System features an integrated environmentally protected IP66 rated enclosure with pan/tilt positioner, which can be controlled using IP protocols.

Thermal Type

At the core of the Esprit TI Series Thermal IP Positioning System is an uncooled, sun-safe microbolometer, long-wavelength infrared (LWIR) camera that delivers VGA thermal video.

Sensitivity, Display, and Lenses

The Esprit TI Series Thermal IP Positioning System provides outstanding sensitivity below 50 mK. It is capable of multiple display formats, including white hot or black hot signatures. The Esprit TI Series Thermal IP Positioning System is available with multiple lens configurations for effective deployment in a wide range of applications.

Resolution and Power

The Esprit TI Series Thermal IP Positioning System is available in VGA resolution. The camera requires a 24 VDC power source.

In IP installations, the Esprit TI Series Thermal IP Positioning System can support two simultaneous video streams. The two streams can be compressed in MJPEG and H.264 formats across several resolution configurations. The streams can be configured to a variety of frame rates, bit rates, and group of pictures (GOP) structures for additional bandwidth administration.

Pan and Tilt Speeds

The Esprit TI Series Thermal IP Positioning System provides variable pan and tilt speeds ranging from 0.01° to 120° per second maximum. Pan and tilt preset speeds are 120° per second. The Esprit TI Series Thermal IP Positioning System is capable of 360° of continuous pan rotation. The tilt range is up to 90° to -30° upright (-90° to 30° inverted). Preset positions have a repeatability of 0.05°.

Ideal Applications

The enclosure makes the Esprit TI Series Thermal IP Positioning System ideal for either indoor or outdoor applications. The system has a sustained operating temperature range of -20° to 65°C (-4° to 149°F) with the sun shield.



TECHNICAL SPECIFICATIONS

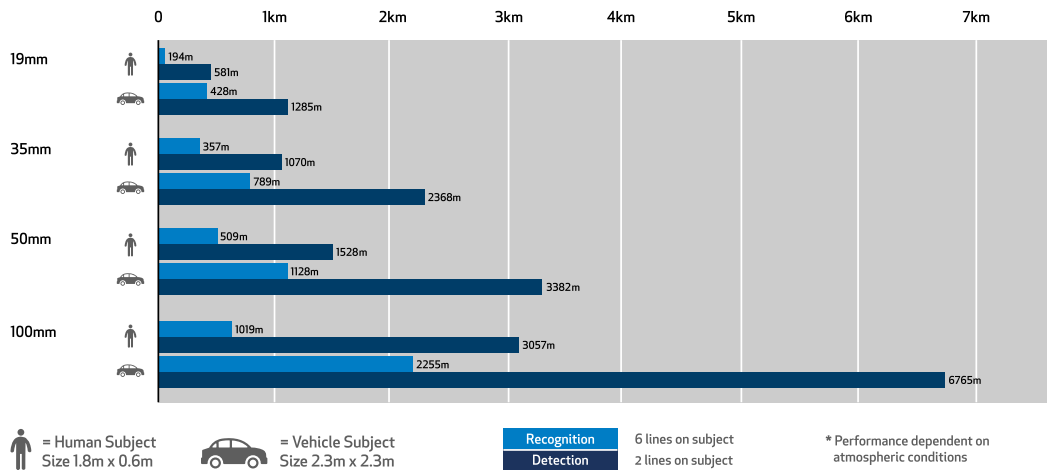
CAMERA

	Thermal Channel	
Imager Type	Uncooled Microbolometer 7.5-14μ	
Resolutions	17μ 640 x 480 (NTSC/PAL)	
Signal-to-Noise Ratio	<50 mK	
	Video	
Video Streams	Primary H.264 Secondary H.264, and MJPEG	
Available Resolutions	D1, 4CIF, VGA, 2CIF, CIF	
Video Encoding	H.264 and MJPEG	
Video Optimization	Automatic or Manual AGC, Polarity: White Hot/Black Hot	
Bit Rate Control	10000-400000 (bps)	
Frame Rates	30 Hz or 7.5 Hz	
Orientation Modes	Up or Down	
	Lens	
Lens Type	Athermal Fixed Focus Lens	
Lens Options (Field of View)	Lens:	HFoV°:
	19 mm	33.2°
	35 mm	17.6°
	50 mm	12.4°
	100 mm	6.2°
	General	
Construction	Aluminum	
Finish	RAL 9002	
Unit Height	370 mm	
Unit Weight	7 kg (Depends on lens configuration)	
Environmental Rating	IP66	
Certifications	CE, FCC, UL (with applicable power supply), IP66	
	Electrical	
Network Port	Standard 10/100 Base-T Ethernet Port	
Power Input	20-30 VDC	
Power Consumption	20 W typical; 40 W maximum	
	Environmental	
Operating Temperature	-20°C to 65°C (-4°F to 149°F) with sun shield	
Operating Humidity	95%	
Storage Temperature	-20°C to 65°C (-4°F to 149°F)	
Storage Humidity	95%	
	Network	
Software Interface	ONVIF Profile S and API	
Supported Protocols	IPv4/v6, UDP, TCP, IGMP, ICMP, ARP, DHCP, DNS	
Security Access	Yes	
	Pan/Tilt Characteristics	
Pan Range	360° continuous	
Tilt Range	Up to 90° to -30° upright (-90° to 30° inverted)	
Pan Speed	0.01° to 120°/second maximum	
Repeatability	0.05°	
	Minimum System Requirements	
Operating System	Windows 7 or Windows 10	
Network Interface	Standard 10/100 Base-T Ethernet port	
Web Browser	Internet Explorer 11 with Microsoft Silverlight	

TECHNICAL SPECIFICATIONS

DETECTION AND RECOGNITION

Esprit TI - Thermal Series



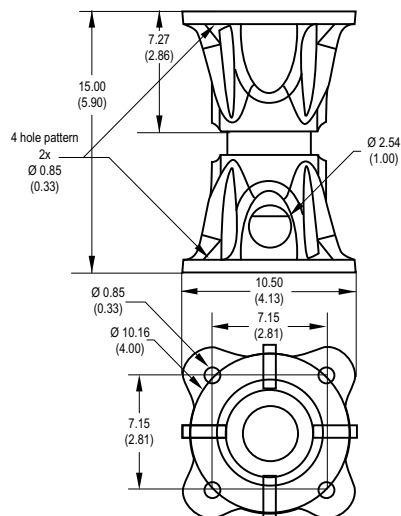
RECOMMENDED MOUNTS AND ADAPTERS

ESTIWM	Esprit TI Wall Mount
ESTIPM	Esprit TI Pole Mount (Must be used with Wall Mount)
ESTIPA	Esprit TI Pedestal Adapter

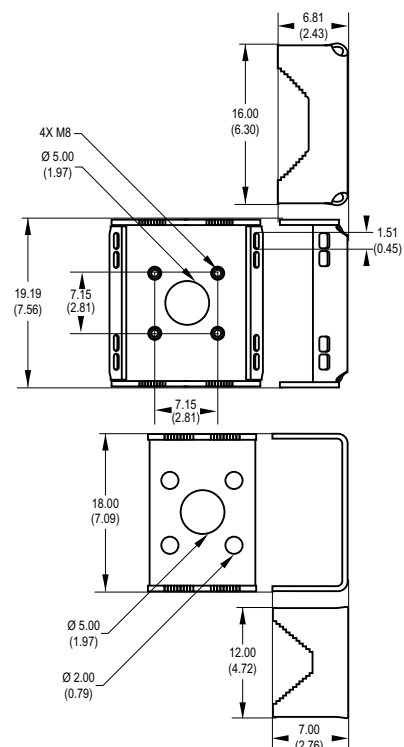
RECOMMENDED POWER SUPPLIES AND ACCESSORIES

ESTICAB-P50	Esprit TI POW DC Cable 50 ft
ESTIPS-US	Esprit TI Indoor or Non-Environmental Power 24 VDC US 120 VAC
ESTIPS-EU	Esprit TI Environmental Power 24 VDC EU 220 VAC

ESPRIT TI PEDESTAL ADAPTER



ESPRIT TI POLE MOUNT



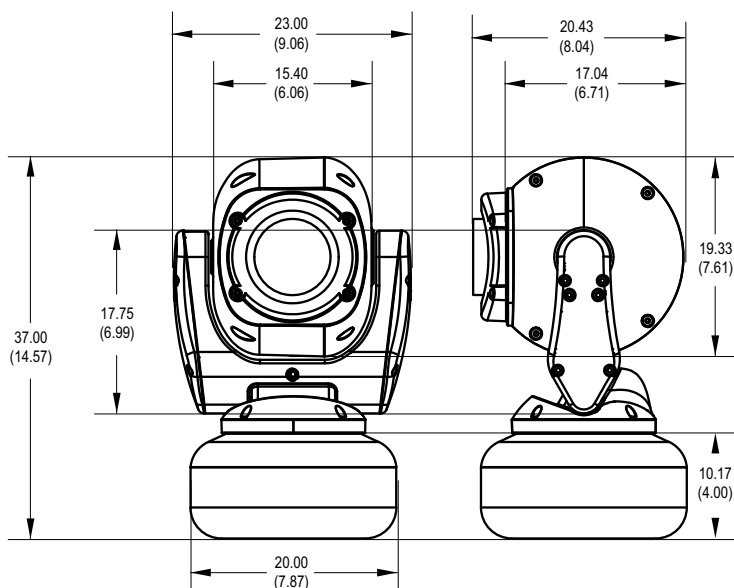
TECHNICAL SPECIFICATIONS

MODELS*

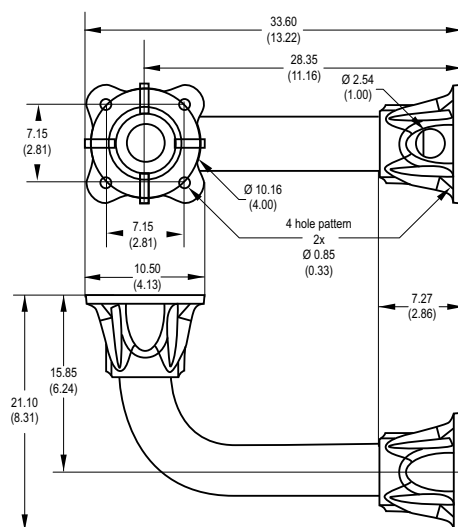
Resolution	FPS	Lens	Part Number	Description
VGA	30 Hz	19 mm	ESTI2619	Esprit TI Series Thermal PT IP Positioning System
		35 mm	ESTI2635	
		50 mm	ESTI2650	
		100 mm	ESTI26100	
	7.5 Hz	19 mm	ESTI2619-1	
		35 mm	ESTI2635-1	
		50 mm	ESTI2650-1	
		100 mm	ESTI26100-1	



VALUES IN PARENTHESES ARE INCHES; ALL OTHERS ARE CENTIMETERS.



ESPRIT TI WALL MOUNT



⚠ WARNING: Cancer and Reproductive Harm - www.P65Warnings.ca.gov.
⚠ ADVERTENCIA: Cáncer y Daño Reproductivo - www.P65Warnings.ca.gov.
⚠ AVERTISSEMENT: Cancer et Troubles de l'appareil reproducteur - www.P65Warnings.ca.gov.

Pelco, Inc.

625 W. Alluvial, Fresno, California 93711 United States
USA & Canada Tel (800) 289-9100 Fax (800) 289-9150
International Tel +1 (559) 292-1981 Fax +1 (559) 348-1120
www.pelco.com

Pelco, the Pelco logo, and other trademarks associated with Pelco products referred to in this publication are trademarks of Pelco, Inc. or its affiliates. ONVIF and the ONVIF logo are trademarks of ONVIF Inc. All other product names and services are the property of their respective companies. Product specifications and availability are subject to change without notice. ©Copyright 2020, Pelco, Inc. All rights reserved.