



**PI MANUFACTURING**

Powered by Infinite Solutions

# HDMI Extender Over Cat6 Cable with Built-in IR and HDMI Loop Out

## HDMI-CAT6-60M-2 Data Sheet

### Product Features

- Extends HDMI and IR over a single Cat6 23AWG cable
- 1080p resolution at up to 131ft using Cat6 23AWG cable
- HDMI loop out for local display
- Supports all HDMI features including 1080p Full HD, deep color, lip sync, CEC and all multi-channel audio formats, including Dolby Digital Plus, 7.1 LPCM, Dolby TrueHD and DTS Master Audio
- Control devices via IR signal
- Plug and play, no drivers required
- Metal housing for durability



## Overview

PI Manufacturing's HDMI extender extends HDMI signals up to 131 feet using Cat6 cables with support up to 1080p and IR control. In addition to extending the HDMI signal, this model has a loop out function on the sender end to connect a local HDMI display. Constructed with a durable aluminum design with wall mountable cut outs for easy installation in any application, the HDMI extender features Full HD support and support for uncompressed audio outputs (LPCM, Dolby TrueHD, DTS Master Audio). IR control also allows you to easily control your source devices, such as Blu-ray players, television receivers, and other HDMI enabled devices.

## 1080p Full HD

With support for resolutions up to 1080p / 60Hz, you're able to view your output in high definition. HDCP support also allows protected content to be effortlessly viewed without issues.

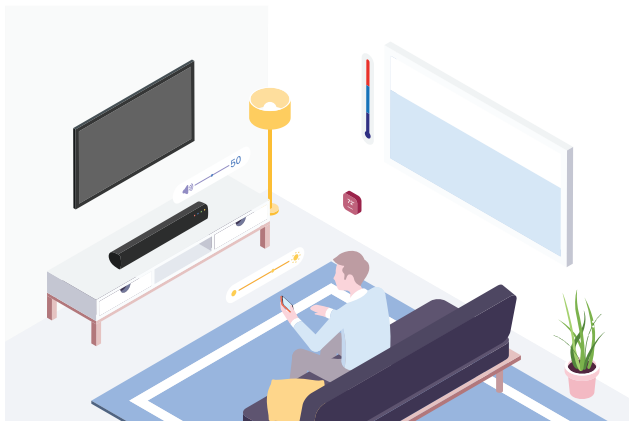
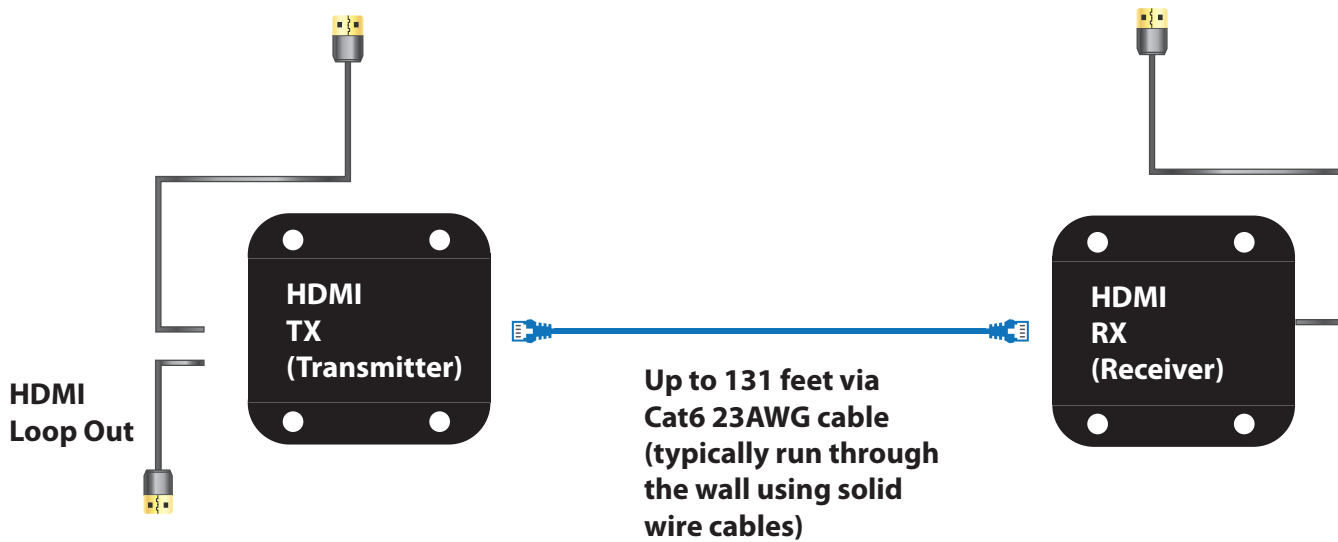
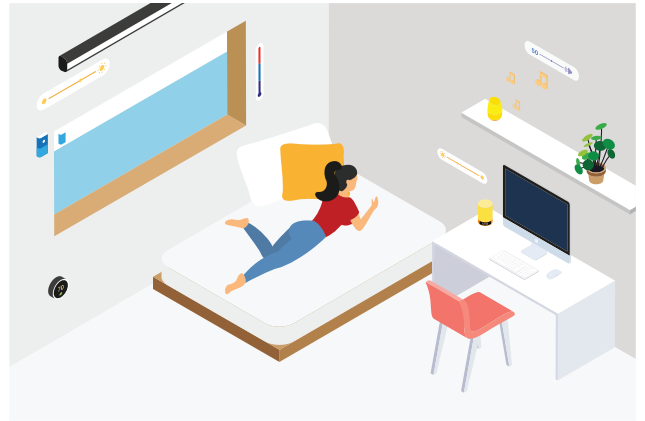


# Typical Applications

## Closet



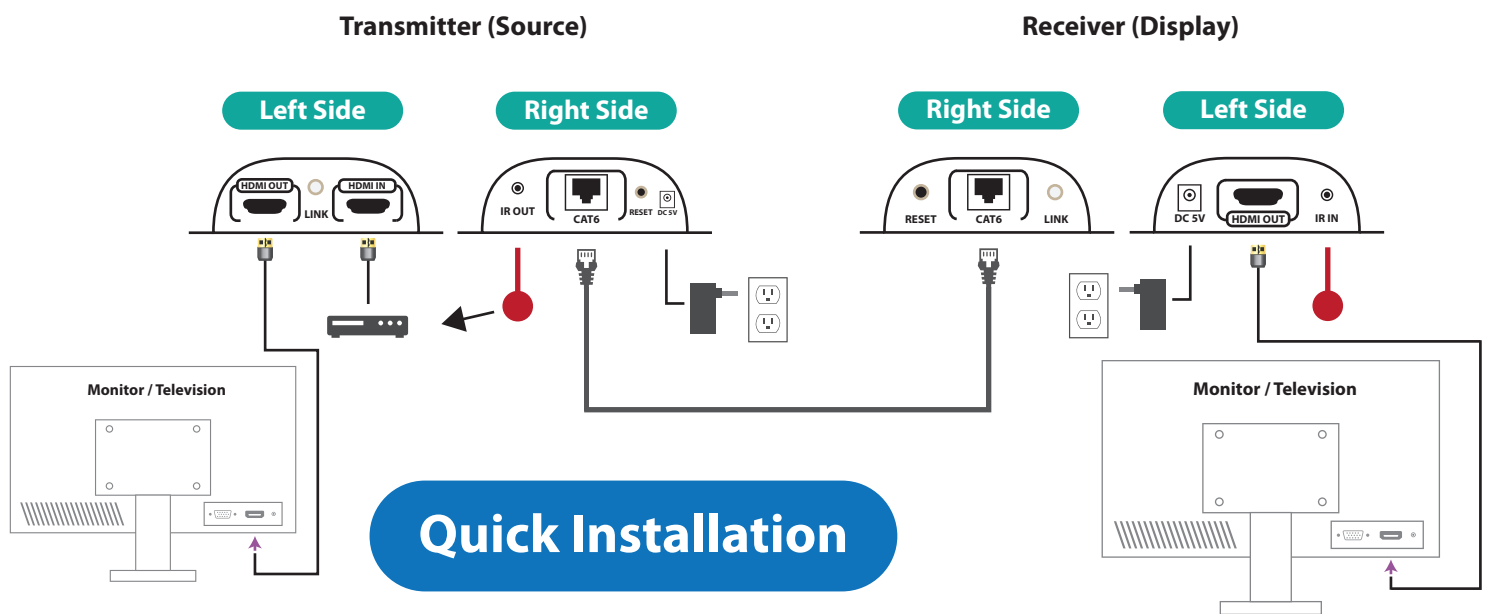
## Bedroom



## Living Room

## Plug and Play Operation

Setting up the HDMI extender is as easy as plugging in the HDMI source on the transmitter end and then plugging in HDMI displays on both the transmitter and receiver end. Plug in the included IR cables on both ends to allow the IR signal to be sent remotely, select the length of Cat6 or higher Ethernet 23AWG cable (up to 131 feet) to plug into the Ethernet port on both ends of the transmitter / receiver, and then plug in the included 5V 1A power adapters on both ends for operation.



## Specifications

Power	DC5V 1A
Network Cable	Cat6 (23AWG)
Video Support	480i / 60Hz 480p / 60Hz 576i / 50Hz 576p / 50Hz 720p / 50/60Hz 1080i / 50/60Hz 1080p / 50/60Hz
HDCP Version	1.3
Transmission Length	131ft (40m)
IR Remote Control	Supports 20-60kHz
Power Consumption	TX: <2W; RX: <2W
Operating Temperature	32~104°F (0~40°C)
Storage Temperature	-4~140°F (-20~60°C)
Humidity	20-90% (non-condensing)
Product Dimensions (L x W x H)	71.6 x 66.6 x 24.8mm
Product Weight	Transmitter / Receiver - 2.95 oz / each (0.18 lbs)

## Package Includes

What's Included	1 - HDMI Transmitter (TX) 1 - HDMI Receiver (RX) 2 - Power Adapters 1 - IR Out 1 - IR In 1- User Manual
-----------------	--