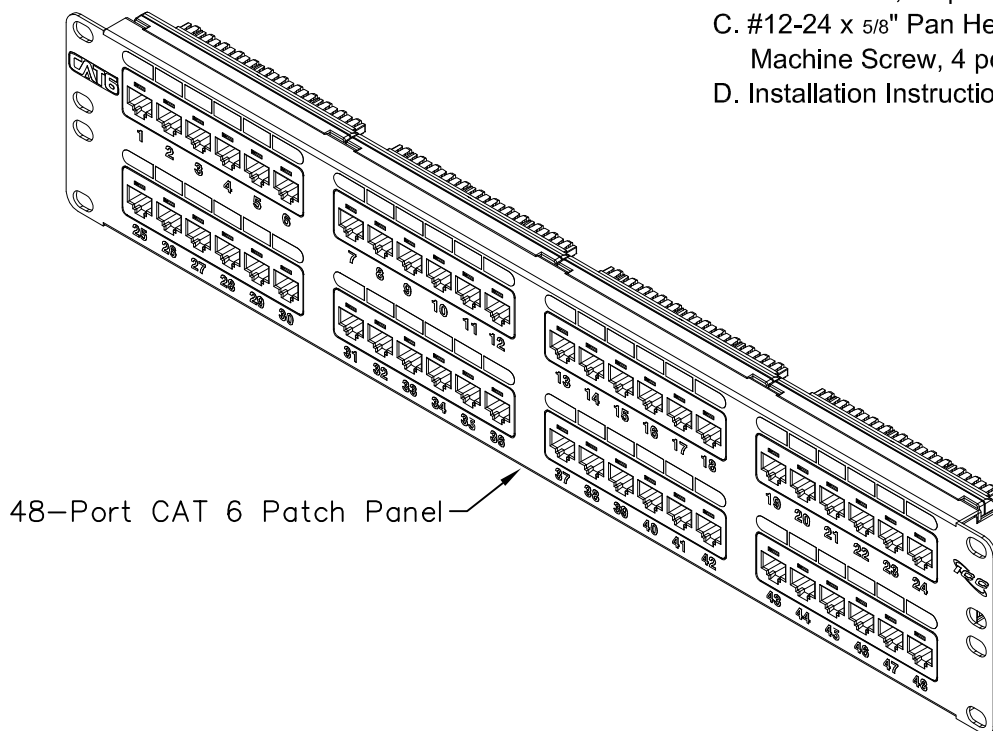


# 48-Port Category 6 Patch Panel

## PRODUCT SPECIFICATION

### Package includes:

- A. 48-Port CAT 6 Patch Panel, 1 pc
- B. 6" Cable Tie, 10 pcs
- C. #12-24 x 5/8" Pan Head, Pilot Point Machine Screw, 4 pcs
- D. Installation Instructions, 1 sheet



48-Port CAT 6 Patch Panel

### Features and Benefits:

- Rack mounted CAT 6 component rated patch panel provides excellent performance for data networks requiring maximum speed and bandwidth.
- Enhanced crosstalk cancellation reduces return loss and improves performance by rejecting noise and unwanted signals.
- Exceeds ANSI/TIA-568-C requirements for permanent, channel link and component performances
- Engineered to provide 110 IDC termination reducing installation time.
- Includes an integrated TIA-568A/B color wiring diagram.
- Backwards compatible to all lower rated category components.
- Designed to fit all standard 19" racks and cabinets.
- 2 rack mount space (RMS).
- Used with ICPCSK CAT 6 patch cords and ICACSPDT00 110 punch down tool.
- Installation instructions.
- UL 1863 compliant

### PATCH PANEL, CAT 6, 48-PORT, 2 RMS

ITEM NO. ICMPP04860

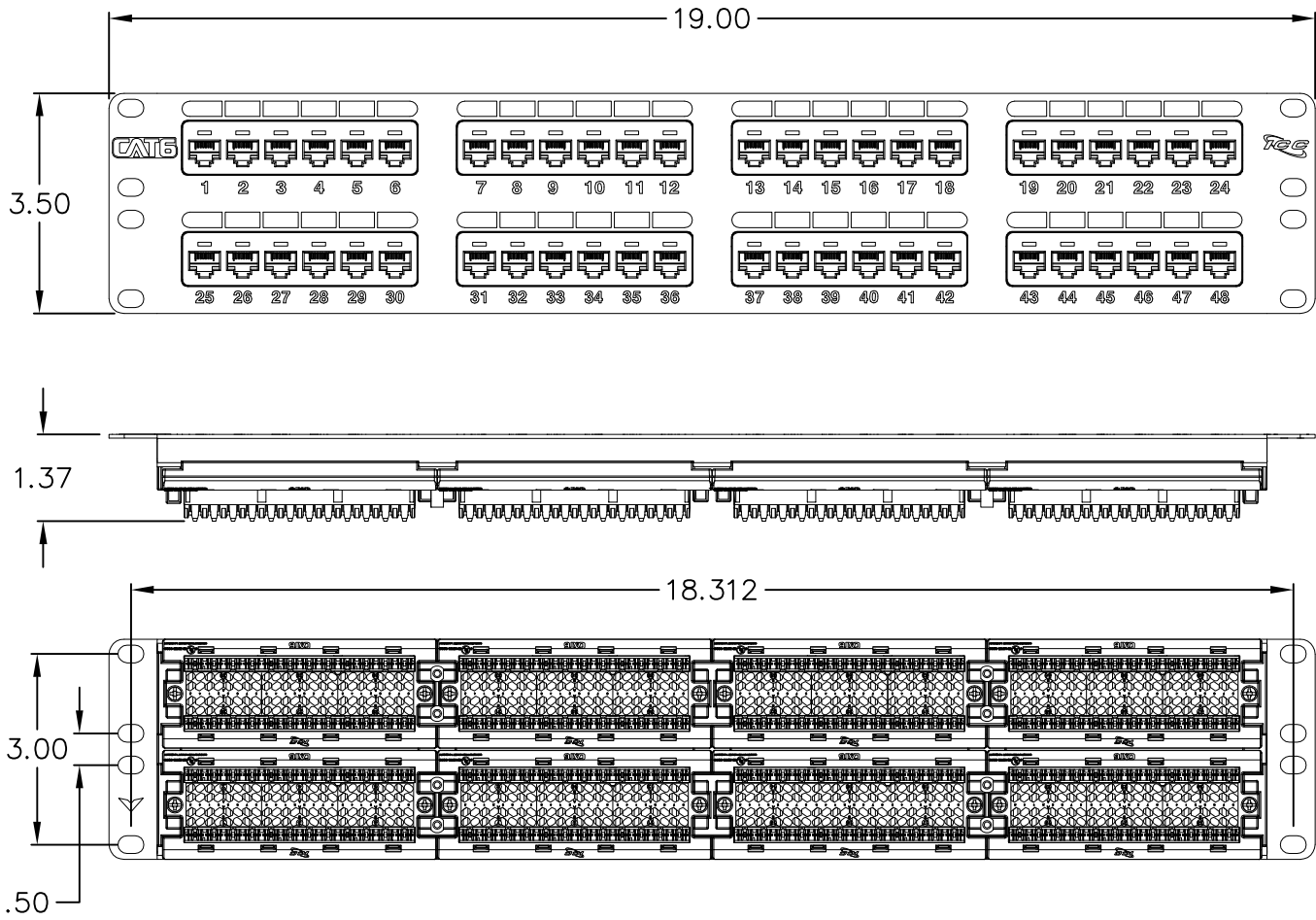
REV. D

DWG NO. PSMPP04860

PAGE NO. 1



CUSTOMER CARE / TECHNICAL SUPPORT \* CSR@ICC.COM / 888-ASK-4-ICC (275-4422) \* 2100 E. Valencia Dr, Suite D, Fullerton, CA 92831 \* www.icc.com



**NOTE: UNLESS OTHERWISE SPECIFIED**

1. 48-PORT CAT 6 PATCH PANEL:

A. MATERIAL:

- 48-PORT PATCH PANEL: 16 GA CRS
- JACK HOUSING: HIGH IMPACT, FLAME RETARDANT PLASTIC, UL 94V-0
- SPRING WIRE: PHOSPHOR BRONZE
- 110 CONNECTOR: PHOSPHOR BRONZE ALLOY WITH 100 MICRO-INCH ALLOY
- GOLD RATING: 50 MICRO INCHES OF GOLD OVER 100 MICRO INCHES OF NICKEL

B. SURFACE FINISH: BLACK POWDER COAT

C. MECHANICAL:

- MATING FORCE: 100 GRAMS MIN/CONTACT
- TEMPERATURE RANGE: -40°~70°C
- PLUG RETENTION IN JACK: 50N (11 LBS SQ)
- IDC WIRE GAUGE: 22~24 AWG


D. ELECTRICAL:

- CURRENT RATING: 1.5 AMP DC
- CONTACT RESISTANCE: 2.5 MILOHMS MAX

RJ-45	110 CONNECTOR	UNIVERSAL WIRING	
		T568B	T568A
5	1	WHITE/BLUE	WHITE/BLUE
4	2	BLUE	BLUE
1	3	WHITE/ORANGE	WHITE/GREEN
2	4	ORANGE	GREEN
3	5	WHITE/GREEN	WHITE/ORANGE
6	6	GREEN	ORANGE
7	7	WHITE/BROWN	WHITE/BROWN
8	8	BROWN	BROWN

CATEGORY 6 CONNECTING HARDWARE REQUIREMENTS												
FREQUENCY (MHz)	1.0	4.0	8.0	10.0	16.0	20.0	25.0	31.25	62.5	100	200	250
NEXT LOSS (db)	75.0	75.0	75.0	74.0	69.9	68.0	66.0	64.1	58.1	54.0	48.0	46.0
FEXT LOSS (db)	75.0	71.1	65.0	63.1	59.0	57.1	55.1	53.2	47.2	43.1	37.1	35.1
RETURN LOSS (db)	30.0	30.0	30.0	30.0	30.0	30.0	30.0	30.0	28.1	24.0	18.0	16.0
INSERTION LOSS(db)	0.10	0.10	0.10	0.10	0.10	0.10	0.10	0.11	0.16	0.20	0.28	0.32

UL US FILE NO. 125268

<b>PATCH PANEL, CAT 6, 48-PORT, 2 RMS</b>		 <b>Premium Products</b> Proven Performance Competitive Prices	
ITEM NO.	ICMPP04860		REV. D
DWG NO.	PSMPP04860	PAGE NO.	2

CUSTOMER CARE / TECHNICAL SUPPORT \* CSR@ICC.COM / 888-ASK-4-ICC (275-4422) \* 2100 E. Valencia Dr, Suite D, Fullerton, CA 92831 \* www.icc.com